



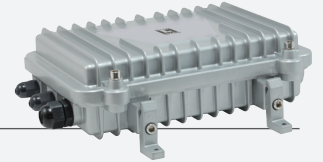
PFE-1001R  
PFE-1001T / PFE-1101T



PFE-1004R



PFE-1011 / PFE-1014



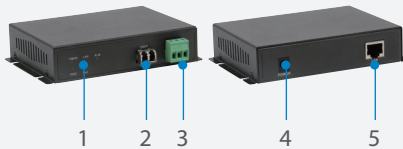
## PoE Extender over Hybrid Fiber

H/W Version: 1

Using hybrid fiber and copper cable, the LevelOne PFE range can deliver integrated power and data over a distance of 6,800 ft (2km) to a receiver which provides high-power PoE output for IP surveillance

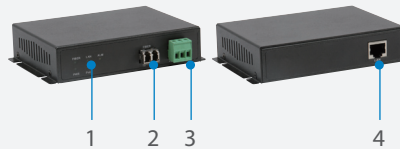
applications. A tough outdoor range (PFE-1011/1014) provides the same performance within a durable IP66-rated waterproof housing for harsh environmental conditions and temperature range of -40°C to 60°C.

### PFE-1001T/PFE-1101T



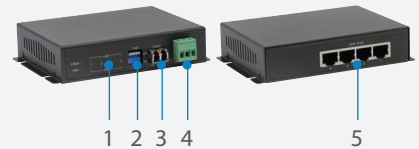
1. LED Indicators
2. 10/100Mbps Fiber Port
3. Terminal block
4. Power Jack
5. 10/100Mbps RJ-45 Port

### PFE-1001R



1. LED Indicators
2. 10/100Mbps Fiber Port
3. Terminal block
4. 10/100Mbps RJ-45 PoE Port

### PFE-1004R



1. LED Indicators
2. PoE Dip Switch
3. 10/100Mbps Fiber Port
4. Terminal block
5. 10/100Mbps RJ-45 PoE Port

### Key Features

- Comply with IEEE 802.3x 10Base-T, 100Base-TX & 100Base-FX standard
- One Fiber Optic LC connector and one RJ-45 connector
- 100 Mbps Data Transfer Rate (Full Duplex)
- Transmission distances up to 2km, Multimode fiber
- Supports auto-negotiation with 10M/100M, full/half duplex capability
- Support auto MDI-MDIX configuration to match the end of the link
- LED indicators allow for visual verification of power, fiber and LAN activity
- Choice of compact metal casing with rack mount facility or IP-66 rating for outdoor applications
- Rated for tough working environments where dust, vibration, temperature and humidity are present
- Supports midspan high power PoE to extend fiber/power distances up to 2Km

### Works Well With



**POC-4002**  
8-Bay PoE Injector Chassis

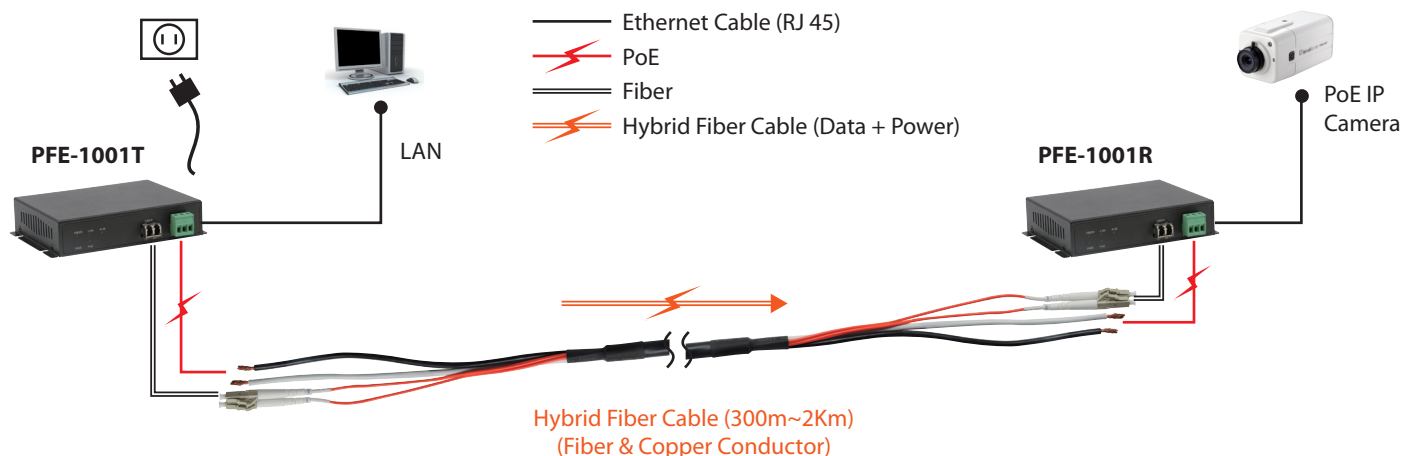


**FCS-5061**  
5-Megapixel Day/Night PoE-Plus  
Outdoor Network Camera

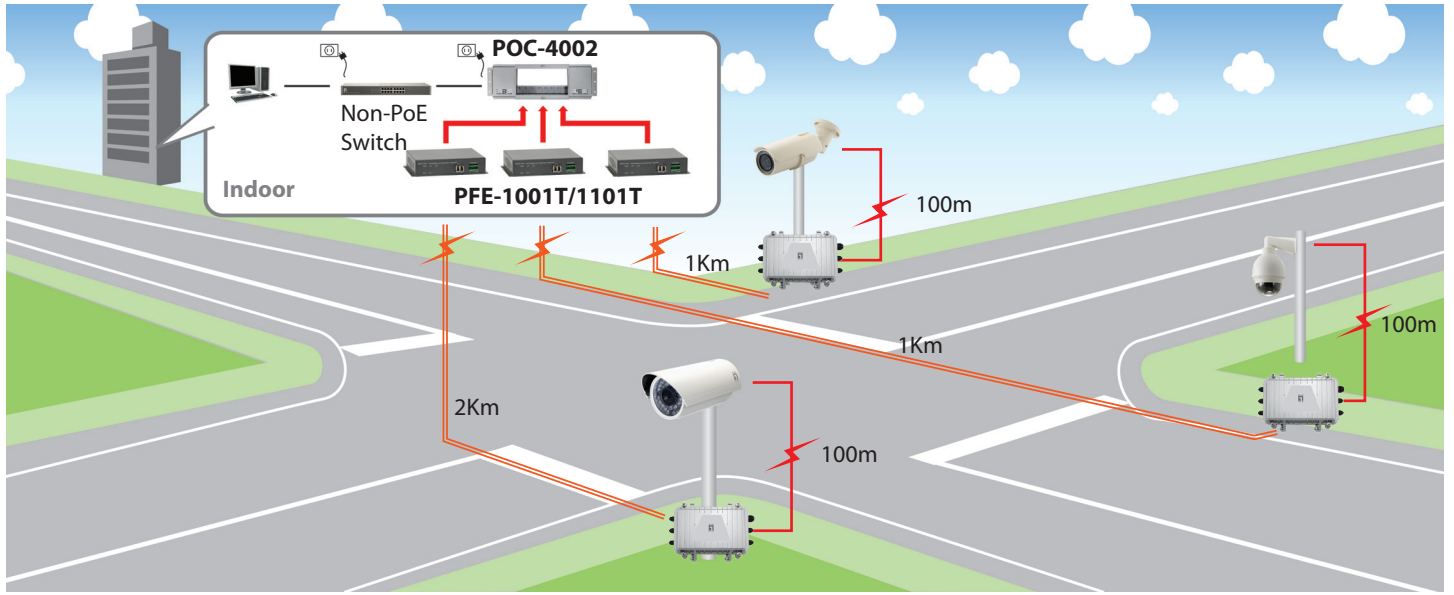
### Technical Specifications

Model No	PFE-1001T	PFE-1101T	PFE-1001R	PFE-1004R	PFE-1011R	PFE-1014R
<b>Standards &amp; Protocols</b>	IEEE 802.3 10-BASE-T, Ethernet, IEEE 802.3u 100-BASE-TX, Fast Ethernet					
<b>Buffer Memory</b>	128KB					
<b>Connectors and Cabling</b>	1 x 10/100Base-TX RJ-45 Port 2km Multi Fiber Optic LC Port DC Jack Input Port Terminal Block Output Port		1 x 10/100Base-TX RJ-45 PoE Port 2km Multi Fiber Optic LC Port Terminal Block Input Port	4 x 10/100Base-TX RJ-45 PoE Ports 2km Multi Fiber Optic LC Port Terminal Block Input Port	1 x 10/100Base-TX RJ-45 PoE Port 2km Multi Fiber Optic LC Port Terminal Block Input Port	4 x 10/100Base-TX RJ-45 PoE Ports 2km Multi Fiber Optic LC Port Terminal Block Input Port
<b>Button</b>	-		-	1~4 PoE Dip Switch	-	
<b>Indicator</b>	Power, LAN, Fiber, PoE, ALM		Power, LAN, Fiber, PoE			
<b>Transmission Method</b>	Store-and-Forward					
<b>Power</b>	Power Consumption: 56V/ 65W Power Input: 100-240V AC, 50-60 Hz, External Power Supply	Power Consumption: 56V/ 120W Power Input: 100-240V AC, 50-60 Hz, External Power Supply	-			
<b>Dimensions (W x D x H mm)</b>	133 x 90 x 28mm				240 x 200 x 72mm	
<b>Weight (g)</b>	250 g				1Kg	
<b>MAC Address Table</b>	1K					
<b>Data Transfer Rate</b>	10/100Mbps					
<b>Packet Forwarding Rate</b>	100Mbps port - 148,000pps, 10Mbps port - 14,880pps					
<b>General</b>	Flow Control: Half Duplex - Backpressure; Full Duplex - Pause frame					
<b>PoE</b>	-		PoE Compatible: IEEE 802.3at/af Power over Ethernet / PSE PoE over current protection PoE circuit sorting protection PoE Power Output: Per Port 56V DC, Max. 20W~60W for 450m~2Km (High Power) Power Pin Assignment: 4/5(+), 7/8(-)			
<b>Temperature (°C)</b>	Operating: 0°C ~ 50°C Storage: 0°C ~ 60°C				Operating: -40°C ~ 60°C Storage: 0°C ~ 60°C	
<b>Humidity (Non-condensing)</b>	Storage: 5% ~ 90%		Operating: 10% ~ 90%			
<b>Approval and Compliance</b>	CE/FCC					
<b>Deployment</b>	Desktop and wall-mountable				wall-mountable	

### Dimension Diagram



- Ethernet Cat.x Cable (Data)
- ⚡ Ethernet Cat.x Cable (Data + Power)
- ⚡ Hybrid Fiber Cable (Data + Power)



### Fiber/Power Distance / PoE Output Table



Mdoel No	Hybrid Cable	Conductor Gauge	450M	700M	1KM	2KM
PFE-1001T	PFC-0112	12 AWG	50W	45W	40W	20W
PFE-1001T	PFC-0118	18 AWG	40W	20W	10W	-
PFE-1101T	PFC-0112	12 AWG	60W	55W	50W	28W
PFE-1101T	PFC-0118	18 AWG	50W	28W	18W	-

### Order Information

- PFE-1001T:** PoE Extender over Hybrid Fiber, Transmitter, 65W
- PFE-1101T:** PoE Extender over Hybrid Fiber, Transmitter, 120W
- PFE-1001R:** PoE Extender over Hybrid Fiber, Receiver with 1 PoE Output
- PFE-1004R:** PoE Extender over Hybrid Fiber, Receiver with 4 PoE Output
- PFE-1011R:** PoE Extender over Hybrid Fiber, Outdoor Receiver with 1 PoE Output
- PFE-1014R:** PoE Extender over Hybrid Fiber, Outdoor Receiver with 4 PoE Outputs

### Package Contents

- Power Adapter (FPE-1001T & PFE-1101T only)
- Quick Installation Guide

### Accessories



**PFC-0112 / PFC-0118**  
Hybrid Fiber Cable, 12/18 AWG

All mentioned brand names are registered trademarks and property of their owners. Technical specifications are subject to change without notice.

© Copyright Digital Data Communications GmbH. All Rights Reserved.