

RL-7700-3LP

RL-7700-4LP

LOW PROFILE CERAMIC WIREWOUND CHIP INDUCTORS

DESCRIPTION

- Low Profile Chip Inductor

ENVIRONMENTAL DATA

- Storage temperature range:
-55°C to +130°C
- Operating temperature range:
-40°C to +130°C

PACKAGING INFORMATION

- Packaging information: pg. 490

FEATURES & APPLICATIONS

- Ceramic core wirewound construction
- No batch-to-batch variations in inductance
- High reliability due to ceramic wirewound construction
- Widely used in the communication applications such as cellular phones and other high frequency electronic devices

Verify operation with sample in actual circuit. Order samples at www.rencousa.com.

MECHANICAL DIMENSIONS

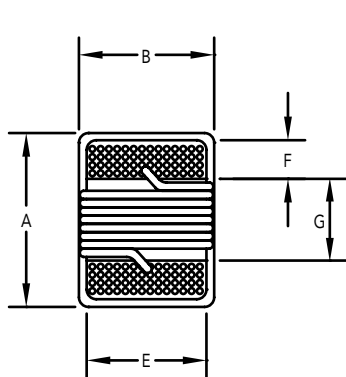
U.S. Standard (mm)

PART NUMBER	A (MAX.)	B (MAX.)	C (MAX.)	D (REF.)	E (MAX.)	F (MAX.)	G (MAX.)
RL-7700-3LP	0.090 (2.29)	0.070 (1.73)	0.040 (1.03)	0.020 (0.51)	0.050 (1.27)	0.017 (0.44)	0.040 (1.02)
RL-7700-4LP	0.120 (2.92)	0.110 (2.79)	0.055 (1.40)	0.025 (0.65)	0.080 (2.03)	0.020 (0.51)	0.059 (1.52)

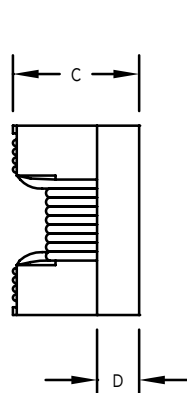
PART NUMBER	PART WEIGHT
RL-7700-3LP	0.14g (0.005oz)
RL-7700-4LP	0.14g (0.005oz)

H (REF.)	I (REF.)	J (REF.)
0.070 (1.78)	0.040 (1.02)	0.029 (0.76)
0.100 (2.54)	0.040 (1.02)	0.050 (1.27)

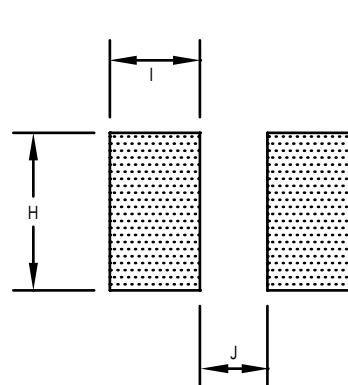
BOTTOM VIEW



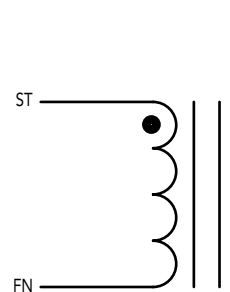
SIDE VIEW



RECOMMENDED LAND PATTERN



SCHEMATIC



RENCO ELECTRONICS INC.

595 International Place, Rockledge, FL 32955-4200 USA • www.rencousa.com • ISO 9001 Certified
Toll Free Engineering Hot Line: 800.645.5828 • P: 321.637.1000 • F: 321.637.1600



RL-7700-3LP

Renco Part No. RL-7700-3LP	Tolerance Available	L (nH)	DCR Max. (Ohms)	Q Min.	SRF Min. (MHz)	Testing Frequency (MHz)	Irms (mA) Max.
RL-7700-3LP-1N8	K	1.8	0.030	55.0	9400.0	250.0	800.0
RL-7700-3LP-3N9	K	3.9	0.060	50.0	6100.0	250.0	800.0
RL-7700-3LP-4N7	K,J	4.7	0.060	50.0	5500.0	250.0	800.0
RL-7700-3LP-6N8	K,J	6.8	0.080	50.0	5500.0	250.0	800.0
RL-7700-3LP-8N2	K,J	8.2	0.080	50.0	4800.0	250.0	800.0
RL-7700-3LP-10N	K,J,G	10.0	0.080	55.0	3300.0	250.0	800.0
RL-7700-3LP-12N	K,J,G	12.0	0.100	55.0	3800.0	250.0	800.0
RL-7700-3LP-15N	K,J,G	15.0	0.100	50.0	2950.0	250.0	800.0
RL-7700-3LP-18N	K,J,G	18.0	0.130	50.0	3100.0	250.0	800.0
RL-7700-3LP-22N	K,J,G	22.0	0.150	50.0	2900.0	250.0	800.0
RL-7700-3LP-27N	K,J,G	27.0	0.230	50.0	2450.0	250.0	600.0
RL-7700-3LP-33N	K,J,G	33.0	0.280	50.0	2350.0	250.0	600.0
RL-7700-3LP-39N	K,J,G	39.0	0.330	50.0	2200.0	250.0	600.0
RL-7700-3LP-47N	K,J,G	47.0	0.390	50.0	2000.0	200.0	600.0
RL-7700-3LP-56N	K,J,G	56.0	0.390	50.0	1850.0	200.0	500.0
RL-7700-3LP-68N	K,J,G	68.0	0.400	50.0	1500.0	200.0	500.0
RL-7700-3LP-82N	K,J,G	82.0	0.440	50.0	1500.0	150.0	500.0
RL-7700-3LP-R10	K,J,G	100.0	0.640	50.0	1200.0	150.0	400.0
RL-7700-3LP-R12	K,J,G	120.0	0.680	40.0	1150.0	150.0	300.0
RL-7700-3LP-R15	K,J,G	150.0	0.800	40.0	1050.0	150.0	300.0

RL-7700-4LP

Renco Part No. RL-7700-4LP	Tolerance Available	L (nH)	DCR Max. (Ohms)	Q Min.	SRF Min. (MHz)	Testing Frequency (MHz)	Irms (mA) Max.
RL-7700-4LP-4N7	K,J	4.7	0.150	42.0	6000.0	50.0	600.0
RL-7700-4LP-8N2	K,J	8.2	0.220	50.0	5000.0	50.0	600.0
RL-7700-4LP-15N	K,J	15.0	0.220	57.0	3000.0	50.0	600.0
RL-7700-4LP-20N	K,J	20.0	0.330	72.0	2400.0	50.0	600.0
RL-7700-4LP-30N	K,J	30.0	0.380	69.0	2400.0	50.0	600.0
RL-7700-4LP-40N	K,J	40.0	0.430	67.0	2000.0	50.0	600.0
RL-7700-4LP-50N	K,J,G	50.0	0.480	72.0	1900.0	50.0	600.0
RL-7700-4LP-60N	K,J,G	60.0	0.520	75.0	1800.0	50.0	600.0
RL-7700-4LP-70N	K,J,G	70.0	0.550	68.0	1700.0	50.0	510.0
RL-7700-4LP-80N	K,J,G	80.0	0.560	75.0	1400.0	50.0	510.0
RL-7700-4LP-90N	K,J,G	90.0	0.610	85.0	1400.0	50.0	500.0
RL-7700-4LP-R56	K,J,G	560.0	1.330	40.0	400.0	25.0	400.0

NOTES:

- ELECTRICAL SPECIFICATIONS MEASURED AT 25°C
- Irms - CURRENT THAT CAUSES THE TEMPERATURE TO RISE APPROX. 40°C ABOVE AMBIENT OF 25°C
- TEST EQUIPMENT: AGILENT / HP 4287 + AGILENT / HP 8753D OR HP 4291A
- WHEN HAND SOLDERING, APPLY SOLDER IRON TO THE PRINTED CIRCUIT BOARD ONLY. TEMPERATURE OF THE IRON TIP SHOULD NOT EXCEED 260°C WITH SOLDERING TIME < 3 SECONDS
- REFLOW SOLDERING CONDITION: 230°C FOR 10 SECONDS MAX

PART NUMBER IDENTIFICATION

RL-7700 -3 LP 4N7 K
(1) (2) (3) (4) (5)

- (1) SERIES NAME
(2) DIMENSIONS
(3) TYPE CODE LP - LOW PROFILE
(4) INDUCTANCE CODE
(5) TOLERANCE CODE: G - ±2% J - ±5% K - ±10%



RENCO ELECTRONICS INC.

595 International Place, Rockledge, FL 32955-4200 USA • www.rencousa.com • ISO 9001 Certified
Toll Free Engineering Hot Line: 800.645.5828 • P: 321.637.1000 • F: 321.637.1600

