



Data Sheet



Product Category: IF SAW Filter

Part Number
820-IF70.0M-N

Package
20.2 x 12.6 Thru Hole

Application
Base Station & Repeater

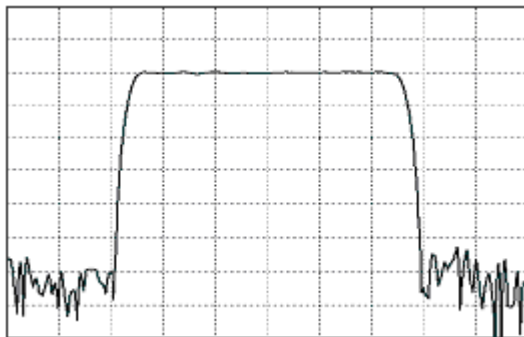
Last Modified
May 02 2003

TYPE :

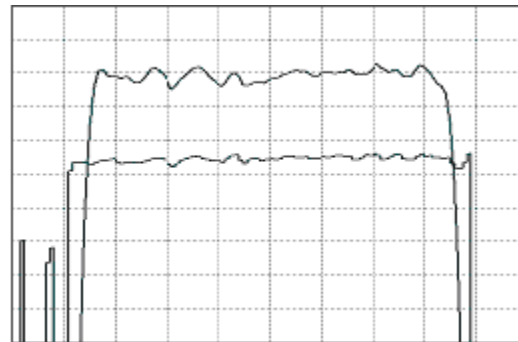
70.0 MHz Bandpass Filter
25.0 MHz Bandwidth

PART NUMBER :

820-IF70.0M-N



Horizontal : 5.0 MHz/Div
Vertical : 10 dB/Div



Horizontal : 3.6 MHz/Div
Vertical : 1 dB/Div
Vertical : 100 ns/Div

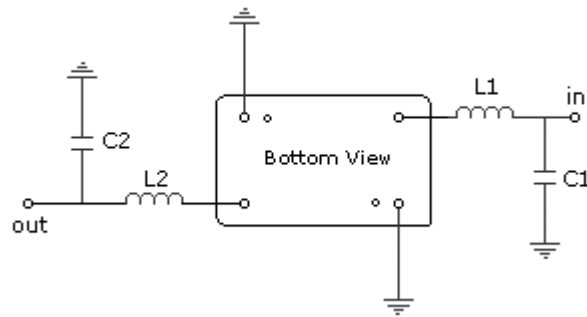
OPERATING CONDITIONS / ELECTRICAL CHARACTERISTICS

PARAMETERS	Minimum	Typical	Maximum	Units
Center Frequency	69.90	70.00	70.10	MHz
Insertion Loss	-	26.6	28.0	dB
1dB Bandwidth	24.5	24.9	-	MHz
3dB Bandwidth	25.0	25.6	-	MHz
40dB Bandwidth	-	28.6	30.0	MHz
Passband Ripple	-	0.74	1.0	dB
Group Delay Variation	-	45	70	nsec
Absolute Delay	-	1.64	-	µsec
Ultimate Rejection	50	55	-	dB
Substrate Material	-	LN	-	-
Ambient Temperature	-	25	-	°C

* Custom SAW IF Filters available. Contact Oscilent for assistance.

PACKAGE OUTLINE (mm)

TEST FIXTURE



L1 = 270nH C1 = 27pF
 L2 = 220nH C1 = 33pF
 Source/Load Impedance = 50 ohms

Oscilent Corporation - CALL **949.252.0522**

17962 Sky Park Circle , Building D , Irvine , CA 92614 , USA
 Fax: 949.252.0599 , E-Mail: Sales@Oscilent.com

Part No.: 820-IF70.0M-N