



RL-1325

RL-1326

MIL-T-27D POWER LINE CHOKES

DESCRIPTION

- Powerline Choke

ENVIRONMENTAL DATA

- Storage temperature range: -55°C to +130°C
- Operating temperature range: -40°C to +130°C

PACKAGING INFORMATION

- Packaging information: pg.

FEATURES & APPLICATIONS

- Meets MIL-T-27D, Class-S specifications
- 99 values offer a wide range of standard inductances from 3.9 μH to 100,000 μH and saturation currents from 14.7 A to 0.077 A
- Typical applications include: switching regulators, power amplifiers, power supplies, SCR and TRIAC Controls, RFI suppression, filters, reactors, power inductors, and audio inductors

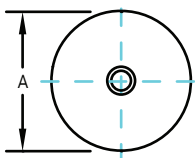
Verify operation with sample in actual circuit. Order samples at www.rencousa.com.

MECHANICAL DIMENSIONS

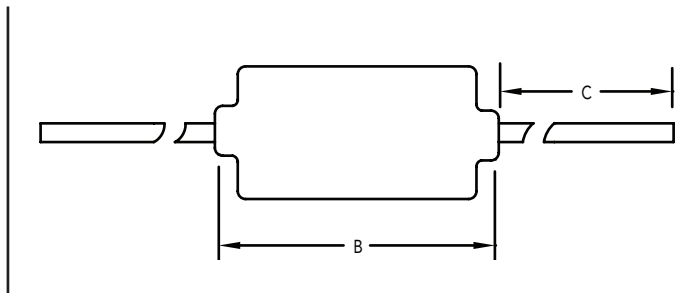
U.S. Standard (mm)

PART NUMBER	A	B	C (MIN.)	PART WEIGHT
RL-1325	0.500 (12.70) \pm 0.015 (0.380)	0.250 (6.35) \pm 0.015 (0.380)	1.000 (25.40)	10.0g (0.35oz)
RL-1326	1.000 (25.40) \pm 0.030 (0.761)	0.675 (17.15) \pm 0.030 (0.761)	1.000 (25.40)	2.0g (0.071oz)

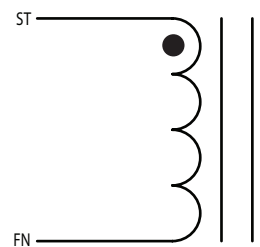
TOP VIEW



SIDE VIEW



SCHEMATIC



RENCO ELECTRONICS INC.

595 International Place, Rockledge, FL 32955-4200 USA • www.rencousa.com • ISO 9001 Certified
Toll Free Engineering Hot Line: 800.645.5828 • P: 321.637.1000 • F: 321.637.1600



RL-1325

Renco Part No. RL-1325	Inductance (μ H) @ 10 kHz	DCR Max. (Ohms)	Isat (A)	Irms (A)
RL-1235-3.9	3.9	0.008	15.500	4.0
RL-1325-4.7	4.7	0.009	13.900	4.0
RL-1325-5.6	5.6	0.010	12.600	4.0
RL-1325-6.8	6.8	0.012	11.600	4.0
RL-1325-8.2	8.2	0.014	9.890	4.0
RL-1325-10	10.0	0.014	8.700	4.0
RL-1325-12	12.0	0.021	8.210	4.0
RL-1325-15	15.0	0.024	7.340	4.0
RL-1325-18	18.0	0.025	6.640	4.0
RL-1325-22	22.0	0.029	6.070	4.0
RL-1325-27	27.0	0.030	5.360	4.0
RL-1325-33	33.0	0.035	4.820	4.0
RL-1325-39	39.0	0.036	4.360	4.0
RL-1325-47	47.0	0.039	3.980	4.0
RL-1325-56	56.0	0.041	3.660	3.2
RL-1325-68	68.0	0.048	3.310	2.5
RL-1325-82	82.0	0.066	3.100	2.0
RL-1325-100	100.0	0.070	2.790	1.6
RL-1325-120	120.0	0.099	2.540	1.6
RL-1325-150	150.0	0.118	2.220	1.6
RL-1325-180	180.0	0.135	1.980	1.6
RL-1325-220	220.0	0.152	1.890	1.6
RL-1325-270	270.0	0.178	1.630	1.6
RL-1325-330	330.0	0.201	1.510	1.6
RL-1325-390	390.0	0.233	1.390	1.6
RL-1325-470	470.0	0.309	1.240	1.2
RL-1325-560	560.0	0.396	1.170	1.0
RL-1325-680	680.0	0.444	1.050	1.0
RL-1325-820	820.0	0.603	0.970	0.8
RL-1325-1000	1000.0	0.684	0.870	0.8
RL-1325-1200	1200.0	0.972	0.790	0.6
RL-1325-1500	1500.0	1.140	0.700	0.6
RL-1325-1800	1800.0	1.300	0.640	0.6
RL-1325-2200	2200.0	1.730	0.580	0.5
RL-1325-2700	2700.0	2.270	0.530	0.4
RL-1325-3300	3300.0	2.780	0.470	0.4
RL-1325-3900	3900.0	3.030	0.430	0.4
RL-1325-4700	4700.0	3.510	0.390	0.4
RL-1325-5600	5600.0	4.310	0.359	0.315
RL-1325-6800	6800.0	6.260	0.322	0.250

NOTES:

1. INDUCTANCES \pm 15% AT 10 kHz
2. Isat LOWERS INDUCTANCE 5%
3. CASE MATERIAL DIALYL PHTHALATE TYPE SDG-F
4. AVAILABLE TAPED AT REELED FOR AUTO INSERTION
5. LEADS NO. 20 TINNED COPPER 1" LONG MIN.
6. ELECTRICAL SPECIFICATIONS MEASURED AT 25°C
7. Irms - CURRENT THAT CAUSES THE TEMPERATURE TO RISE APPROX. 40°C ABOVE AMBIENT OF 25°C
8. 10% TOLERANCE OPTIONAL
9. NON-STANDARD VALUES AVAILABLE
10. GRADE 5, CLASS S: -55°C TO 130°C
11. MANUFACTURED TO MIL-T-27D*

*THE RL-1325, RL-1326 ARE DESIGNED TO MEET MIL-STD-27D, REV.E CLASS S, HOWEVER, THEY ARE NOT CURRENTLY LISTED ON THE DESC. QUALIFIED PRODUCTS LIST.

RL-1325 TABLE CONTINUES ON FOLLOWING PAGE



RENCO ELECTRONICS INC.

595 International Place, Rockledge, FL 32955-4200 USA • www.rencousa.com • ISO 9001 Certified
Toll Free Engineering Hot Line: 800.645.5828 • P: 321.637.1000 • F: 321.637.1600



RL-1325

Renco Part No. RL-1325	Inductance (μ H) @ 10 kHz	DCR Max. (Ohms)	Isat (A)	Irms (A)
RL-1325-8200	8200.0	6.95	0.293	0.250
RL-1325-10000	10000.0	8.03	0.266	0.250
RL-1325-12000	12000.0	10.1	0.241	0.200
RL-1325-15000	15000.0	11.6	0.214	0.200
RL-1325-18000	18000.0	16.3	0.198	0.158
RL-1325-22000	22000.0	24.0	0.180	0.125
RL-1325-27000	27000.0	25.0	0.162	0.125
RL-1325-33000	33000.0	28.3	0.146	0.125
RL-1325-39000	39000.0	35.0	0.135	0.100
RL-1325-47000	47000.0	39.7	0.122	0.100
RL-1325-56000	56000.0	45.0	0.112	0.100
RL-1325-68000	68000.0	63.0	0.101	0.082
RL-1325-82000	82000.0	87.2	0.090	0.065
RL-1325-100000	100000.0	98.7	0.081	0.065

RL-1326

Renco Part No. RL-1326	Inductance (μ H) @ 10 kHz	DCR Max. (Ohms)	Isat (A)	Irms (A)
RL-1326-3.9	3.9	0.019	7.3	1.280
RL-1326-4.7	4.7	0.022	6.8	1.280
RL-1326-5.6	5.6	0.024	5.6	1.280
RL-1326-6.8	6.8	0.025	5.3	1.280
RL-1326-8.2	8.2	0.028	4.5	1.280
RL-1326-10	10.0	0.033	4.1	1.280
RL-1326-12	12.0	0.037	3.6	1.280
RL-1326-15	15.0	0.040	3.3	1.280
RL-1326-18	18.0	0.044	3.0	1.280
RL-1326-22	22.0	0.052	2.7	1.280
RL-1326-27	27.0	0.059	2.5	1.280
RL-1326-33	33.0	0.073	2.2	1.008
RL-1326-39	39.0	0.103	2.0	0.804
RL-1326-47	47.0	0.120	1.8	0.804
RL-1326-56	56.0	0.154	1.7	0.804
RL-1326-68	68.0	0.144	1.5	0.804
RL-1326-82	82.0	0.167	1.4	0.804
RL-1326-100	100.0	0.229	1.2	0.632
RL-1326-120	120.0	0.311	1.1	0.508
RL-1326-150	150.0	0.374	1.0	0.508

NOTES:

1. INDUCTANCES \pm 15% AT 10 kHz
2. Isat LOWERS INDUCTANCE 5%
3. CASE MATERIAL DIALYL PHTHALATE TYPE SDG-F
4. AVAILABLE TAPED AT REELED FOR AUTO INSERTION
5. LEADS NO. 20 TINNED COPPER 1" LONG MIN.
6. ELECTRICAL SPECIFICATIONS MEASURED AT 25°C
7. Irms - CURRENT THAT CAUSES THE TEMPERATURE TO RISE APPROX. 40°C ABOVE AMBIENT OF 25°C
8. 10% TOLERANCE OPTIONAL
9. NON-STANDARD VALUES AVAILABLE
10. GRADE 5, CLASS S: -55°C TO 130°C
11. MANUFACTURED TO MIL-T-27D*

*THE RL-1325, RL-1326 ARE DESIGNED TO MEET MIL-STD-27D, REV.E CLASS S, HOWEVER, THEY ARE NOT CURRENTLY LISTED ON THE DESC. QUALIFIED PRODUCTS LIST.

RL-1326 TABLE CONTINUES ON FOLLOWING PAGE



RENCO ELECTRONICS INC.

595 International Place, Rockledge, FL 32955-4200 USA • www.rencousa.com • ISO 9001 Certified
Toll Free Engineering Hot Line: 800.645.5828 • P: 321.637.1000 • F: 321.637.1600



RL-1326

Renco Part No. RL-1326	Inductance (μ H) @ 10 kHz	DCR Max. (Ohms)	Isat (A)	Irms (A)
RL-1326-180	180.0	0.398	0.950	0.508
RL-1326-220	220.0	0.473	0.860	0.508
RL-1326-270	270.0	0.613	0.770	0.400
RL-1326-330	330.0	0.732	0.700	0.400
RL-1326-390	390.0	0.849	0.640	0.400
RL-1326-470	470.0	1.270	0.590	0.315
RL-1326-560	560.0	1.400	0.540	0.315
RL-1326-680	680.0	1.770	0.490	0.250
RL-1326-820	820.0	2.160	0.440	0.200
RL-1326-1000	1000.0	2.530	0.400	0.200
RL-1326-1200	1200.0	2.920	0.350	0.200
RL-1326-1500	1500.0	3.800	0.330	0.158
RL-1326-1800	1800.0	4.430	0.290	0.158
RL-1326-2200	2200.0	4.930	0.270	0.158
RL-1326-2700	2700.0	5.940	0.240	0.125
RL-1326-3300	3300.0	7.720	0.220	0.125
RL-1326-3900	3900.0	9.490	0.200	0.100
RL-1326-4700	4700.0	10.600	0.180	0.100
RL-1326-5600	5600.0	15.300	0.166	0.082
RL-1326-6800	6800.0	17.900	0.151	0.082
RL-1326-8200	8200.0	22.900	0.136	0.065
RL-1326-10000	10000.0	29.000	0.125	0.050
RL-1326-12000	12000.0	32.900	0.114	0.050
RL-1326-15000	15000.0	46.800	0.098	0.039
RL-1326-18000	18000.0	53.100	0.091	0.039

NOTES:

1. INDUCTANCES \pm 15% AT 10 kHz
2. Isat LOWERS INDUCTANCE 5%
3. CASE MATERIAL DIALLYL PHTHALATE TYPE SDG-F
4. AVAILABLE TAPED AT REELED FOR AUTO INSERTION
5. LEADS NO. 20 TINNED COPPER 1" LONG MIN.
6. ELECTRICAL SPECIFICATIONS MEASURED AT 25°C
7. I_{rms} - CURRENT THAT CAUSES THE TEMPERATURE TO RISE APPROX. 40°C ABOVE AMBIENT OF 25°C
8. 10% TOLERANCE OPTIONAL
9. NON-STANDARD VALUES AVAILABLE
10. GRADE 5, CLASS S: -55°C TO 130°C
11. MANUFACTURED TO MIL-T-27D*

*THE RL-1325, RL-1326 ARE DESIGNED TO MEET MIL-STD-27D, REV.E CLASS S, HOWEVER, THEY ARE NOT CURRENTLY LISTED ON THE DESC. QUALIFIED PRODUCTS LIST.



RENCO ELECTRONICS INC.

595 International Place, Rockledge, FL 32955-4200 USA • www.rencousa.com • ISO 9001 Certified
Toll Free Engineering Hot Line: 800.645.5828 • P: 321.637.1000 • F: 321.637.1600

