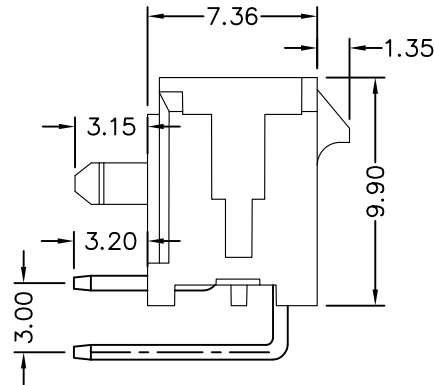
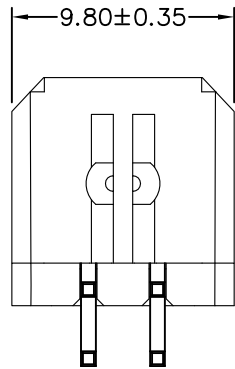


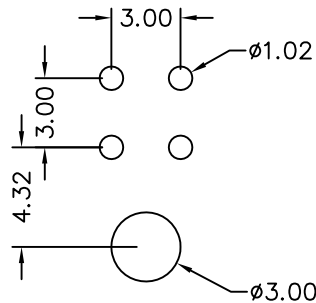
MATERIAL  
 Contacts: Brass  
 Insulator: NY6T

SPECIFICATION  
 Current Rating: 1A AC, DC  
 Voltage Rating: 50V AC, DC  
 Contact Resistance: 20mΩ Max  
 Insulation Resistance: 100MΩ Min  
 Withstanding Voltage: 500V AC/minute

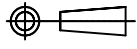

733-7 2- 04 T B 1 0  
 1 2 3 4 5 6 7



- 1. 5: Normal parts  
 7: Green Product  
 9: Green Product High Temp
- 2. 2: Right angle type
- 3. No. of contacts
- 4. T: Tin plated  
 G: Gold flash
- 5. B: Black Insulator
- 6. 1: With post
- 7. Pinrex internal code.



Recommended P.C.B Layout

				TOLERANCE				OLD PART NO.		TITLE		 頻銳科技股份有限公司 PINREX TECHNOLOGY CORP.
				.0 =±.30 .00 =±.20 .000 =±.XXX .0000=±. ANG.=±3'		UNITS : mm		DRAWER 胡雨婷		CHECK		
B	增加柱子长度尺寸3.15mm和塑胶材质描述	2014/03/06				SCALE	SIZE	SHEET	REV.	APP'D	DRAW NO.	
A	RELEASE	2013/10/28				NONE	A4	1 OF 1	B		733-72-04TB10(B版)	
REV.	DESCRIPTION	DATE										