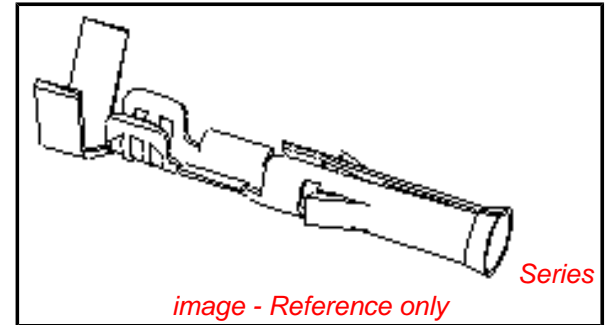


**PLEASE CHECK WWW.MOLEX.COM FOR LATEST PART INFORMATION**

**Part Number:** [0002091122](#)  
**Status:** **Active**  
**Overview:** [standard\\_093](#)  
**Description:** 2.36mm (.093") Diameter, Standard .093" Pin and Socket Crimp Terminal, Series 2273, Female, with Tin (Sn) Plated Contact, Low Engagement Force, 18-22 AWG, Reel

**Documents:**

[Drawing \(PDF\)](#) [RoHS Certificate of Compliance \(PDF\)](#)  
[Product Specification PS-02-09 \(PDF\)](#)



**General**

Product Family	Crimp Terminals
Series	<a href="#">2273</a>
Comments	Low Engagement Force
Crimp Quality Equipment	Yes
Overview	<a href="#">standard_093</a>
Product Name	Standard .093"

**Physical**

Gender	Female
Material - Metal	Brass
Material - Plating Mating	Tin
Material - Plating Termination	Tin
Packaging Type	Reel
Plating min: Mating (µin)	20
Plating min: Mating (µm)	0.50
Plating min: Termination (µin)	20
Plating min: Termination (µm)	0.50
Termination Interface: Style	Crimp or Compression
Wire Insulation Diameter	1.52-3.05mm (.060-.120")
Wire Size AWG	18, 20, 22
Wire Size mm <sup>2</sup>	N/A

**Material Info**

Old Part Number 2273-A(P901)

**Reference - Drawing Numbers**

Product Specification PS-02-09

**EU RoHS**

**ELV and RoHS  
Compliant**  
**REACH SVHC  
Not Reviewed**  
**Halogen-Free  
Status  
Not Reviewed**

**China RoHS**



**Need more information on product environmental compliance?**

Email [productcompliance@molex.com](mailto:productcompliance@molex.com)  
 For a multiple part number RoHS Certificate of Compliance, [click here](#)

Please visit the [Contact Us](#) section for any non-product compliance questions.

**Search Parts in this Series**

[2273Series](#)

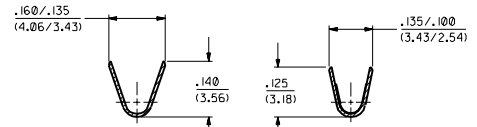
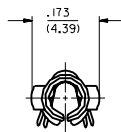
**Application Tooling | [FAQ](#)**

*Tooling specifications and manuals are found by selecting the products below. Crimp Height Specifications are then contained in the Application Tooling Specification document.*

**Global**

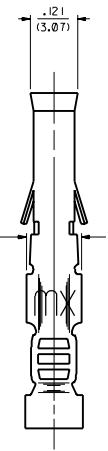
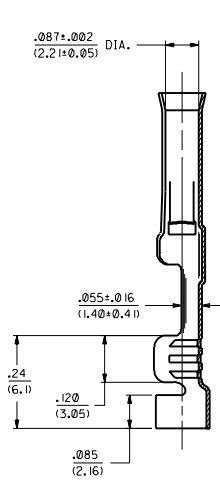
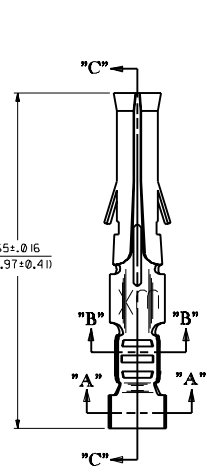
Description	Product #
Mini-Mac™ Applicator	0638927000
Insertion Tool	0011020003
Extraction Tool	0011030006
Terminator Die	0011402002

PART NO.	ENG. NO.
02-09-1122	2273-A(P90 I)
02-09-1123	2273-A(P90 I)L
-	-
-	-
-	-
-	-
-	-
-	-



SECTION "A-A"

SECTION "B-B"



SECTION "C-C"

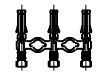
LEGEND  
 2273-A(\*\*\*\*)\*  
 \* - FORM  
 L - BLANK-CHAIN  
 - - LOOSE  
 P - PREPLATE  
 BLANK - POSTPLATE  
 FINISH CODE

- NOTES:
1. TERMINAL FOR USE WITH .093/(2.36) SERIES HOUSINGS AND WILL ACCEPT 18 THRU 22 AWG WIRE.
  2. INSERTION FORCE: 2.0 LBS. AVG. WHEN TERMINAL IS INSERTED INTO AN .093 SERIES HOUSING.
  3. CONTACT RETENTION: 20 LBS. MIN.
  4. THIS PART CONFORMS TO PRODUCT SPEC. 02-09.

MATERIAL NOTES:  
 1. CARTRIDGE BRASS, ALLOY #C26000  
 .008/(0.20) THICK, SPRING TEMPER

FINISH CODES:  
 901 HOT TIN DIP .000020/(0.0005) MIN.

CHAIN FORM  
 FULL SCALE



DIMENSIONS SHOWN METRIC INCH		MFG. SH. REV. L.T.R.		REVISIONS	
TOLERANCES UNLESS OTHERWISE SPECIFIED		TITLE		REVISE PER	
FRACTIONS DECIMALS ANGLES		CRIMP TERM, FEMALE		EGR US 0799	
F PLATE ± .010		FOR 18 THRU 22 AWG WIRE		C/C 2/10/94 RW	
F PLATE ± .014 ± 0.25		MOLLEX INCORPORATED		FINAL RELEASE	
F PLATE --- ± 0.36		101 1 4/5/91		EGR US 0799	
DRIFT: UNLESS OTHERWISE SPECIFIED REMOVE BEFORE DIMENSIONING		PART NO. 2273-A		C/C 4/5/91 RW	
DRIFT: UNLESS OTHERWISE SPECIFIED REMOVE BEFORE DIMENSIONING		DRAWN BY: SEE CHART		DATE: 10/14/91	
DRIFT: UNLESS OTHERWISE SPECIFIED REMOVE BEFORE DIMENSIONING		SCALE: 6:1		DWG. NO. SD-2273-A	
DRIFT: UNLESS OTHERWISE SPECIFIED REMOVE BEFORE DIMENSIONING		SCALE: 6:1		DWG. NO. SD-2273-A	
DRIFT: UNLESS OTHERWISE SPECIFIED REMOVE BEFORE DIMENSIONING		SCALE: 6:1		DWG. NO. SD-2273-A	

2273