

**PLEASE CHECK WWW.MOLEX.COM FOR LATEST PART INFORMATION**

**Part Number:** [0414225001](#)  
**Status:** **Active**  
**Overview:** [flat blade](#)  
**Description:** Crimp Terminal 41422, 14-18 AWG, Reel

**Documents:**

[Drawing \(PDF\)](#) [RoHS Certificate of Compliance \(PDF\)](#)

**General**

Product Family	Crimp Terminals
Series	<a href="#">41422</a>
Crimp Quality Equipment	Yes
Overview	<a href="#">flat blade</a>
Product Name	Flat Blade

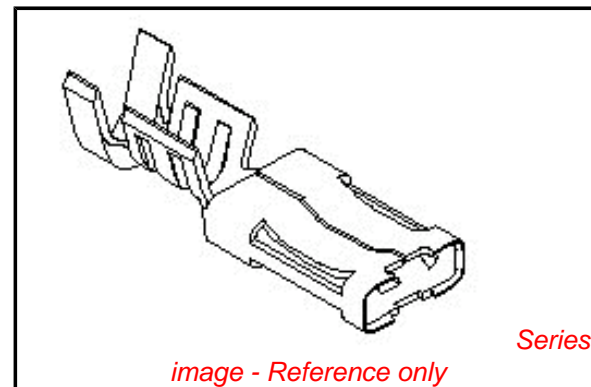
**Physical**

Gender	Female
Material - Metal	Brass
Material - Plating Mating	Tin
Material - Plating Termination	Tin
Packaging Type	Reel
Plating min: Mating (µin)	20
Plating min: Mating (µm)	0.50
Plating min: Termination (µin)	20
Plating min: Termination (µm)	0.50
Termination Interface: Style	Crimp or Compression
Wire Insulation Diameter	.79mm (.031") max.
Wire Size AWG	14, 16, 18
Wire Size mm <sup>2</sup>	N/A

**Material Info**

**Reference - Drawing Numbers**

Sales Drawing [SD-41422-5\\*\\*\\*](#)



*image - Reference only*

**EU RoHS**

**ELV and RoHS  
Compliant**  
**REACH SVHC  
Contains SVHC: No**  
**Halogen-Free  
Status**

**China RoHS**



**Need more information on product  
environmental compliance?**

Email [productcompliance@molex.com](mailto:productcompliance@molex.com)  
 For a multiple part number RoHS Certificate of  
 Compliance, [click here](#)

Please visit the [Contact Us](#) section for any  
 non-product compliance questions.

**Search Parts in this Series**

[41422Series](#)

**Application Tooling | [FAQ](#)**

*Tooling specifications and manuals are  
 found by selecting the products below.  
 Crimp Height Specifications are then  
 contained in the Application Tooling  
 Specification document.*

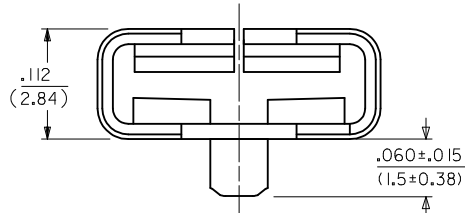
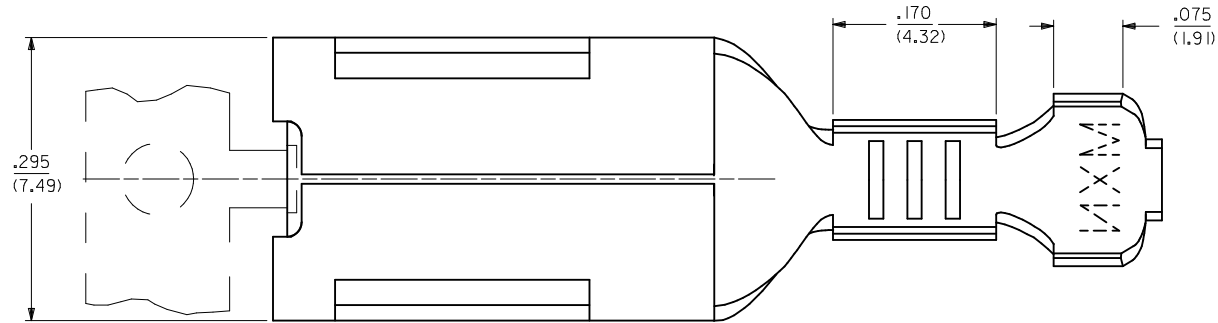
**Global**

Description	Product #
Mini-Mac™ Applicator	<a href="#">0638821100</a>
Terminator Die	<a href="#">0011402193</a>

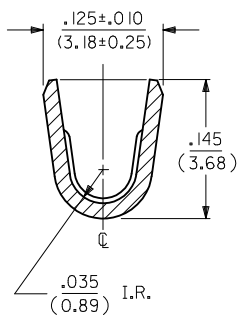
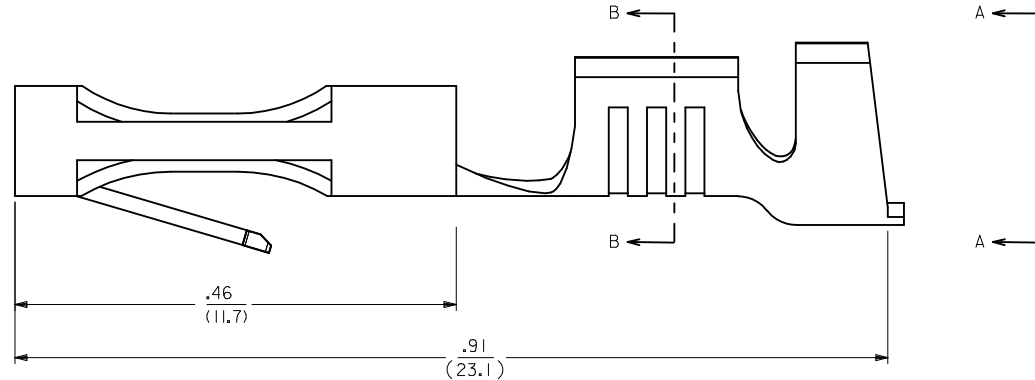
ITEM NO.	ENG. NO.
41422-5001	41422-5001

**NOTES:**

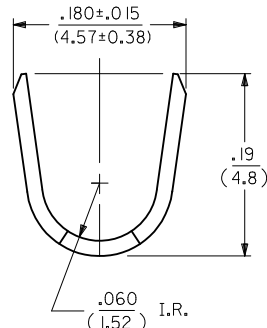
1. MATERIAL: BRASS, ALLOY \*C26000, TEMPER SPRING, .016/(.041) THICK
2. FINISH: ES-88-P901, HOT TIN DIP .00002/(0.0005) MIN.
3. PRODUCT SPECIFICATION: NONE
4. IN ANY HOUSING DESIGN USING THIS TERMINAL, ESPECIALLY WHEN LOW INSERTION FORCES ARE EXPECTED, SOME SORT OF LOCKING DEVICE SHOULD BE CONSIDERED.
5. MATES TO .250/(6.35) X .032/(0.81) NOMINAL MALE TAB TERMINAL.
6. CRIMP TO #14 THROUGH #18 AWG. WIRE WITH .031/(0.79) THK. INSULATION.



CRIMP SECTION NOT SHOWN IN THIS VIEW FOR CLARITY.



**SECTION B-B**



**VIEW A-A**

<b>UPDATED LOCK TAB</b> EC NO: UCP2010-1707 DRW: AELHAG 2010/02/12 CHK: AELHAG 2010/02/22 APPR: FSMITH 2010/02/22	QUALITY SYMBOLS	GENERAL TOLERANCES (UNLESS SPECIFIED)	DIMENSION STYLE	SCALE	DESIGN UNITS	THIRD ANGLE PROJECTION
	▽=0	mm INCH	IN/MM	10:1	INCH	
	▽=0	4 PLACES ± --- ± ---	DRAWN BY DATE	TITLE		
	▽=0	3 PLACES ± 0.006 ± ---	MAB 08/19/94	TERMINAL, PUSH-ON CRIMP		
	2 PLACES ± 0.01 ± .15	CHECKED BY DATE	MOLEX INCORPORATED			
	1 PLACE ± --- ± .3	KBP 08/19/94	SD-41422-5***			
	ANGULAR ± 1/2°	APPROVED BY DATE	1 OF 1			
		RAS 08/19/94	THIS DRAWING CONTAINS INFORMATION THAT IS PROPRIETARY TO MOLEX INCORPORATED AND SHOULD NOT BE USED WITHOUT WRITTEN PERMISSION			
		MATERIAL NO. DOCUMENT NO.				
		SEE CHART				