

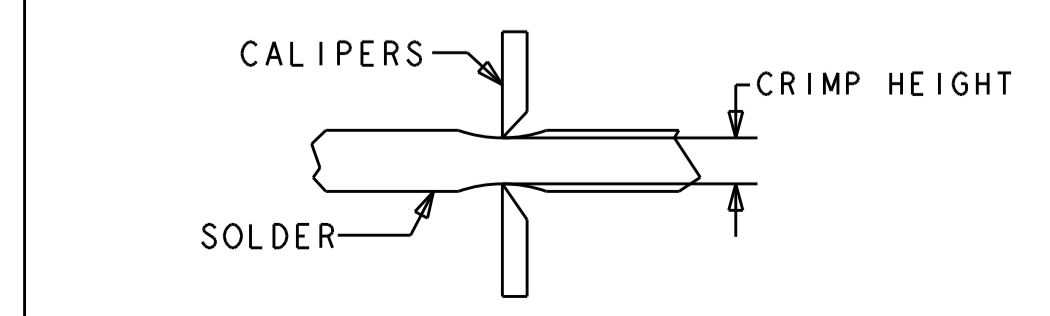
| ATLANTIC VERSION TERMINATOR INTERFACE ADAPTER | PART NUMBER | REVISION | DESCRIPTION | FEED TYPE | APPLICATOR STYLE CONVERSION CHART | | | | | | |
|---|-------------|----------|--------------------------|--------------------------------|-----------------------------------|-----------------------|-----------|-------------|-----------|---|------------------------|
| | | | | | CONVERT TO | PART NUMBERS REQUIRED | | | | | |
| | 2150252-2 | A | FINE CRIMP HEIGHT ADJUST | PNEUMATIC | SERVO LATCH PLATE | 2119951-1 | 1901697-2 | 8-2150252-5 | - | - | 2168400-7 (QUANTITY 2) |
| | 2150252-5 | A | FINE CRIMP HEIGHT ADJUST | SERVO LATCH PLATE ⁴ | SMART APPLICATOR | 2161326-1 | - | 8-2150252-4 | - | - | - |
| | 2150252-6 | A | NON-CRIMP HEIGHT ADJUST | SERVO LATCH PLATE ⁴ | PNEUMATIC FEED | 2119950-1 | 2119792-1 | - | 2119641-1 | - | 2063440-1 |
| | 2150252-7 | A | FINE CRIMP HEIGHT ADJUST | NONE | - | - | - | - | - | - | - |
| | 7-2150252-7 | A | CRIMP TOOLING KIT | - | - | - | - | - | - | - | - |

| APPLICATOR DATA | | |
|--------------------------------|----------------|------|
| CRIMP | SIZE | TYPE |
| WIRE | 5.11 mm [2.01] | D |
| INSUL | - | - |
| APPL INSTRUCTIONS 408-10390 | | |

| TERMINAL DATA: TE TERMINAL | | TE CRIMP SPECIFICATION | |
|--|-------------|-------------------------------|-------------|
| TERMINAL NAME: RECPT, ULTRA-FAST FLAG, .250 SERIES | | | |
| WIRE STRIP LENGTH | | INSULATION DIAMETER RANGE | |
| 7.51-8.33 mm [2.96-.328 IN] | | Ø0.00-4.19 mm [1.000-.165 IN] | |
| TERMINAL APPLICATION SPECIFICATION | 114-2123 | | |
| TERMINALS APPLIED ⁹ | | | |
| TE TERMINAL | TE TERMINAL | TE TERMINAL | TE TERMINAL |
| 2-520128-2 | 2-521164-2 | 9-521164-2 | |

| WIRE SIZE | CRIMP HEIGHT mm [INCH] | CRIMP HEIGHT REFERENCE SETTING | Ø SOLDER |
|--------------|-----------------------------|--------------------------------|-----------------|
| 18 OR (2) 22 | 1.79+/-0.05 [1.070+/-0.002] | 5.7 | .19 in [4.83mm] |
| 22 OR 20 | 1.65+/-0.05 [1.065+/-0.002] | 7.0 | .19 in [4.83mm] |

- ¹ RECOMMENDED SPARE PARTS
- ² GREASE BEARING SURFACES LIGHTLY
- 3. LUBRICATE DAILY PER THE APPLICATOR INSTRUCTION SHEET SUPPLIED WITH THE APPLICATOR.
- ⁴ APPLICATOR SPECIFIC DATA TO BE ENTERED INTO BLANK MEMORY CHIP AT ASSEMBLY. SEE BELOW FOR PART NUMBER:
 PNEUMATIC FEED WITH "SMART APPLICATOR" CONVERSION: 8-2150252-4
 SERVO FEED WITH "FINE CRIMP HEIGHT ADJUST": 8-2150252-5
 SERVO FEED WITH "NON-CRIMP HEIGHT ADJUST": 8-2150252-6
- 5. ADJUSTMENT OF THE STRIPPER MAY BE REQUIRED WHEN MOVING THE APPLICATOR BETWEEN BENCH AND LEADMAKER APPLICATIONS.
- ⁶ GREASE THREADS, GROOVE AND O-RING ON ITEMS 35 & 252.
- ⁷ MAGNET, ITEM 166 MUST BE ORIENTED CORRECTLY IN ORDER TO PROPERLY ACTUATE THE COUNTER.
- ⁸ CRIMP HEIGHT REFERENCE SETTING WAS THE SETTING USED WHEN THE APPLICATOR WAS QUALIFIED AT THE FACTORY. ADJUSTMENT MAY BE NECESSARY WHEN RUNNING APPLICATOR IN THE FIELD.
- ⁹ TERMINAL PITCH NOT COMPATIBLE WITH MECHANICAL FEED.
- ¹⁰ WHEN ASSEMBLING -6 NON-CRIMP HEIGHT ADJUST APPLICATOR USE SHIM PACK 2119957-2 TO ALIGN APPLICATOR'S MAXIMUM WIRE CRIMP HEIGHT AT NORMAL TERMINATOR SHUT HEIGHT
- ¹¹ TO CHECK CRIMP HEIGHT. CRIMP SOLDER (Ø.19 IN [4.83mm] 60/40 SOLID CORE) AND MEASURE AT CENTER OF SLUG.



| SET UP GAUGE | LOC | DIST | REVISIONS | | | |
|--------------|-----|------|-----------|-------------|----|------|
| 2119599-2 | A | 66 | REV | DATE | BY | APPD |
| | | | 1 | 11APRIL2012 | GH | TE |
| | | | A | 18JAN2013 | GH | TE |

| | | | | | | | |
|---|--------|--------|--------|---|-------------|--------------------------------------|-----|
| - | - | 1 | - | - | 2119957-2 | APPLICATOR SHIM PACK | 260 |
| - | 1 | - | 1 | 1 | 8-21084-0 | O-RING, .676 ID, .070 DIA. MAT. | 252 |
| - | - | - | - | 1 | 2119640-1 | PUSH ROD, AIR FEED | 250 |
| - | - | - | - | 1 | 2079988-1 | BUSHING, LCH5-12, MISUMI | 249 |
| - | - | - | - | 1 | 2119641-1 | FEED CAM, AIR FEED | 248 |
| - | 1 | - | 1 | 1 | 2119798-1 | DETENT PIN | 247 |
| - | 1 | - | 1 | 1 | 1-22279-3 | SPRING, COMPRESSION | 246 |
| - | - | 1 | - | - | 2119759-1 | RAM, AMP STYLE, END FEED, NON-ADJUST | 245 |
| - | - | 2 | 2 | - | 2168400-7 | SHCS, LOW HEAD, RoHS, M5 X 10 | 240 |
| - | - | - | - | 1 | 2063440-1 | AIR FEED MODULE | 238 |
| - | 1 | 1 | 1 | 1 | 2119644-6 | RAM WASHER, PRECISION | 221 |
| - | - | 1 | 1 | - | 2119740-2 | TAG, IDENTIFICATION | 213 |
| - | 1 | 1 | 1 | 1 | 467281-1 | RETAINER, SHEAR, FLOATING | 207 |
| - | 1 | 1 | 1 | 1 | 2161936-1 | HOLDER, SHEAR, FLOATING | 206 |
| - | 1 | 1 | 1 | 1 | 467500-1 | SHEAR, FLOATING | 205 |
| - | - | REFREF | - | - | 1901697-2 | FEED FINGER ASSEMBLY, EF | 183 |
| - | - | - | - | 2 | 21045-3 | RING, RETAIN, EXTERN, 3/16 CRESCENT | 172 |
| - | 1 | 1 | 1 | 1 | 994969-1 | MAGNET, RARE EARTH HIGH ENERGY | 166 |
| - | REFREF | REFREF | REFREF | - | 994970-2 | COUNTER, MAGNETIC | 164 |
| - | - | - | - | 1 | 240638-1 | SPRING, FEED FINGER | 163 |
| - | 1 | 1 | 1 | 1 | 2161937-1 | STABILIZER | 154 |
| - | - | - | - | 1 | 3-23627-7 | PIN, RETAIN, GRVD, 3/16 X .854 | 137 |
| - | - | REFREF | - | - | SEE NOTE 4 | MEMORY CHIP, PROGRAMMED | 135 |
| - | - | 1 | 1 | - | 1633743-1 | SERVO FEED LATCH ASM | 133 |
| - | 1 | 1 | 1 | 1 | 2119956-2 | DOCUMENTATION PACKAGE | 71 |
| - | 1 | 1 | 1 | 1 | 3-18032-3 | SCR, SET, FLT POINT M3 X 20.0 | 70 |
| - | 1 | 1 | 1 | 1 | 2-18032-2 | SCR, SET, FLT POINT M3 X 10.0 | 69 |
| - | 1 | - | - | 1 | 2119740-1 | TAG, IDENTIFICATION | 67 |
| - | 2 | 2 | 2 | 2 | 2168078-1 | SCREW, DRIVE, RH, RoHS | 66 |
| - | 1 | - | 1 | 1 | 2119793-1 | LIMITER, ADJUSTMENT BOLT | 63 |
| - | 3 | - | 3 | 3 | 992763-5 | SCR, SET, SOC, CONE POINT, M3 x 4.0 | 62 |
| - | 3 | 3 | 3 | 3 | 2079383-4 | SCR, BHSC, RoHS (M4 X 8) | 60 |
| - | 4 | 4 | 4 | 4 | 2168400-1 | SHCS, LOW HEAD, RoHS, M4 X 12 | 57 |
| - | 2 | 2 | 2 | 2 | 2168083-2 | SCR, SKT HD CAP, RoHS, M4 X 8.0 | 56 |
| - | 2 | 2 | 2 | 2 | 5018030-1 | NUT, HEX, REG, RoHS, M3 | 54 |
| - | 2 | 2 | 2 | 2 | 986965-8 | NUT, LOCK, HEX, TORQUE (M4) | 53 |
| - | - | - | - | 1 | 2161952-1 | PAWL, EF, AIR | 51 |
| - | - | - | - | 1 | 18023-9 | SCR, SKT HD CAP M4 X 6.0 | 49 |
| - | 1 | 1 | 1 | 1 | 1-2119655-5 | APPLICATOR BASIC ASSEMBLY, EF | 46 |
| - | 1 | - | 1 | 1 | 2119369-1 | RAM, AMP STYLE, END FEED | 44 |
| - | 1 | 1 | 1 | 1 | 2079383-7 | SCR, BHSC, RoHS (M8 X 25) | 41 |
| - | 1 | - | 1 | 1 | 2119645-1 | DISC, NUMBERED FA WIRE ADJUSTMENT | 40 |
| - | 1 | - | 1 | 1 | 2119957-1 | APPLICATOR SHIM PACK | 39 |
| - | 1 | 1 | 1 | 1 | 2119644-7 | RAM WASHER, PRECISION | 38 |
| - | 1 | 1 | 1 | 1 | 2119085-1 | FA HEAD, ATLANTIC STYLE | 37 |
| - | 2 | 2 | 2 | 2 | 5-22278-1 | SPRING, COMPRESSION | 36 |
| - | 1 | - | 1 | 1 | 2119092-1 | BOLT, ADJUSTMENT | 35 |
| - | 8 | 8 | 8 | 8 | 1-18028-2 | WASHER, FLAT, REG M4 | 33 |
| - | 2 | 2 | 2 | 2 | 2079383-4 | SCR, BHSC, RoHS (M4 X 8) | 31 |
| - | 2 | 2 | 2 | 2 | 1-2168083-0 | SCR, SKT HD CAP, RoHS, M4 X 10 | 29 |
| - | 1 | 1 | 1 | 1 | 240639-1 | STRIPPER (MACHINING) | 27 |
| - | 2 | 2 | 2 | 2 | 1-2168083-6 | SCR, SKT HD CAP, RoHS, M4 X 35 | 25 |
| - | 1 | 1 | 1 | 1 | 2161941-1 | PLATE, GUIDE, STRIP | 24 |
| - | 2 | 2 | 2 | 2 | 2-22281-3 | SPRING, COMPRESSION | 22 |
| - | 1 | 1 | 1 | 1 | 2161948-1 | DRAG | 20 |
| - | 1 | 1 | 1 | 1 | 683736-1 | GUIDE, STRIP, REAR | 19 |
| - | 1 | 1 | 1 | 1 | 683737-1 | FRONT STRIP GUIDE | 18 |
| - | 4 | 4 | 4 | 4 | 1-2079383-1 | SCR, BHSC, RoHS (M6 X 12) | 17 |
| - | 1 | 1 | 1 | 1 | 4-22280-7 | SPRING, COMPRESSION | 13 |
| - | 1 | 1 | 1 | 1 | 2161935-1 | ANVIL, RIGHT HAND | 8 |
| - | 1 | 1 | 1 | 1 | 2161957-1 | DEPRESSOR, SHEAR | 5 |
| - | 1 | 1 | 1 | 1 | 238009-1 | BLOCK, FL CRIMPER SPACER | 4 |
| - | 1 | 1 | 1 | 1 | 2161331-1 | SPACER, WIRE FUNNEL DEPRESSOR | 2 |
| - | 1 | 1 | 1 | 1 | 467342-1 | CRIMPER, RIGHT HAND | 1 |

***WARNING**
 ON INSTALLATION, SET WIRE DISC, ITEM 40 TO LARGEST WIRE SIZE SETTING. USE OF SETTINGS BELOW MINIMUM REQUIRED CRIMP HEIGHT SETTING WILL CAUSE DAMAGE TO CRIMP TOOLING.

ATLANTIC VERSION
 Shown on sheets 1 of 4 & 2 of 4
 (Pacific version shown on sheets 3 of 4 & 4 of 4)

| DIMENSIONS: | | TOLERANCES UNLESS OTHERWISE SPECIFIED: | | MATERIAL: | | FINISH: | |
|-------------|-----------|--|-------------|--------------|---------------|--|--|
| mm | 0 PLC ±.5 | 1 PLC ±0.5 | 2 PLC ±0.13 | 3 PLC ±0.013 | 4 PLC ±0.0013 | ANGLES ±0.0001 | |
| MATERIAL: | | FINISH: | | WEIGHT: | | Customer Accessible Production Drawing | |

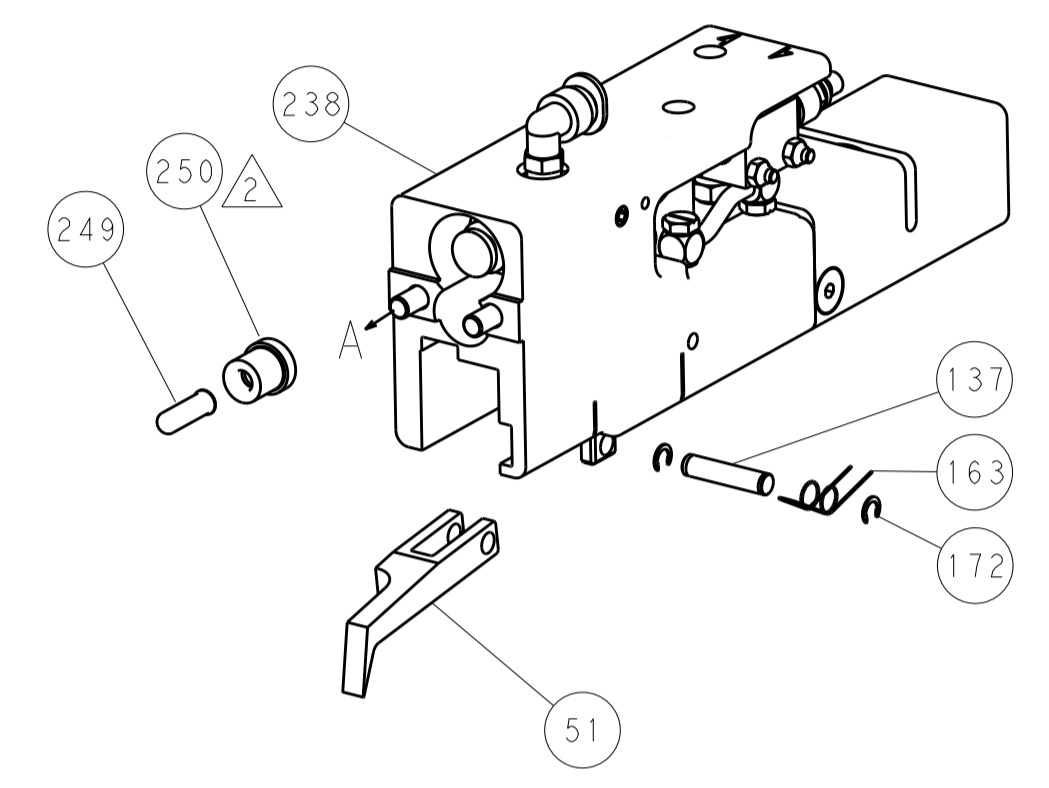
| DATE | BY | DESCRIPTION | DATE | BY | DESCRIPTION |
|-------------|---------|-------------|-------|-------------|-------------|
| 11APRIL2012 | HOFFNER | 12APRIL2012 | ELBIN | 12APRIL2012 | ELBIN |

| | | | |
|---------------------------|---------------------------|------------|---------------|
| TE Connectivity | Harrisburg, PA 17105-3608 | | |
| Ocean End Feed Applicator | | | |
| SIZE | CAGE CODE | DRAWING NO | RESTRICTED TO |
| A1 | 00779 | 2150252 | - |

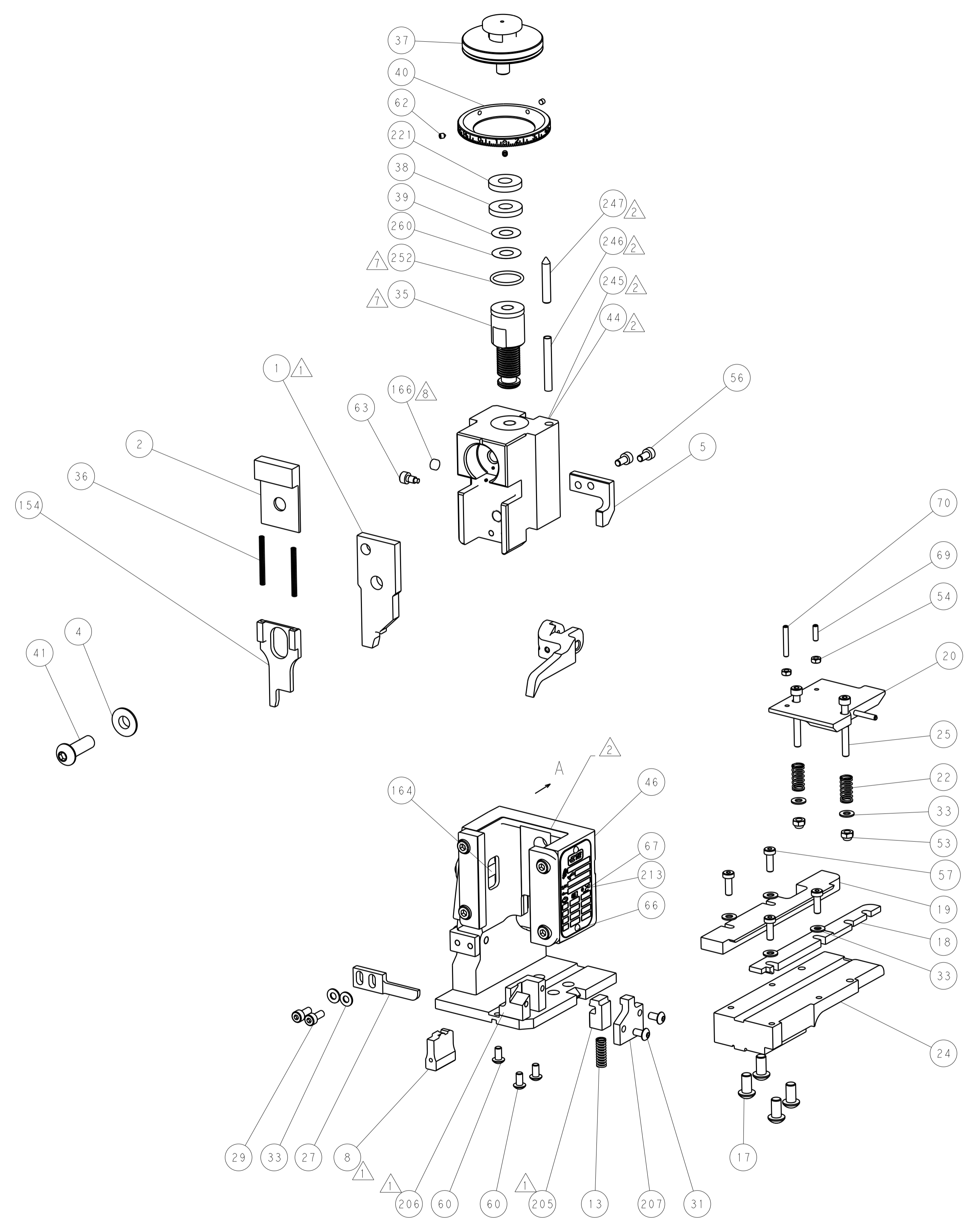
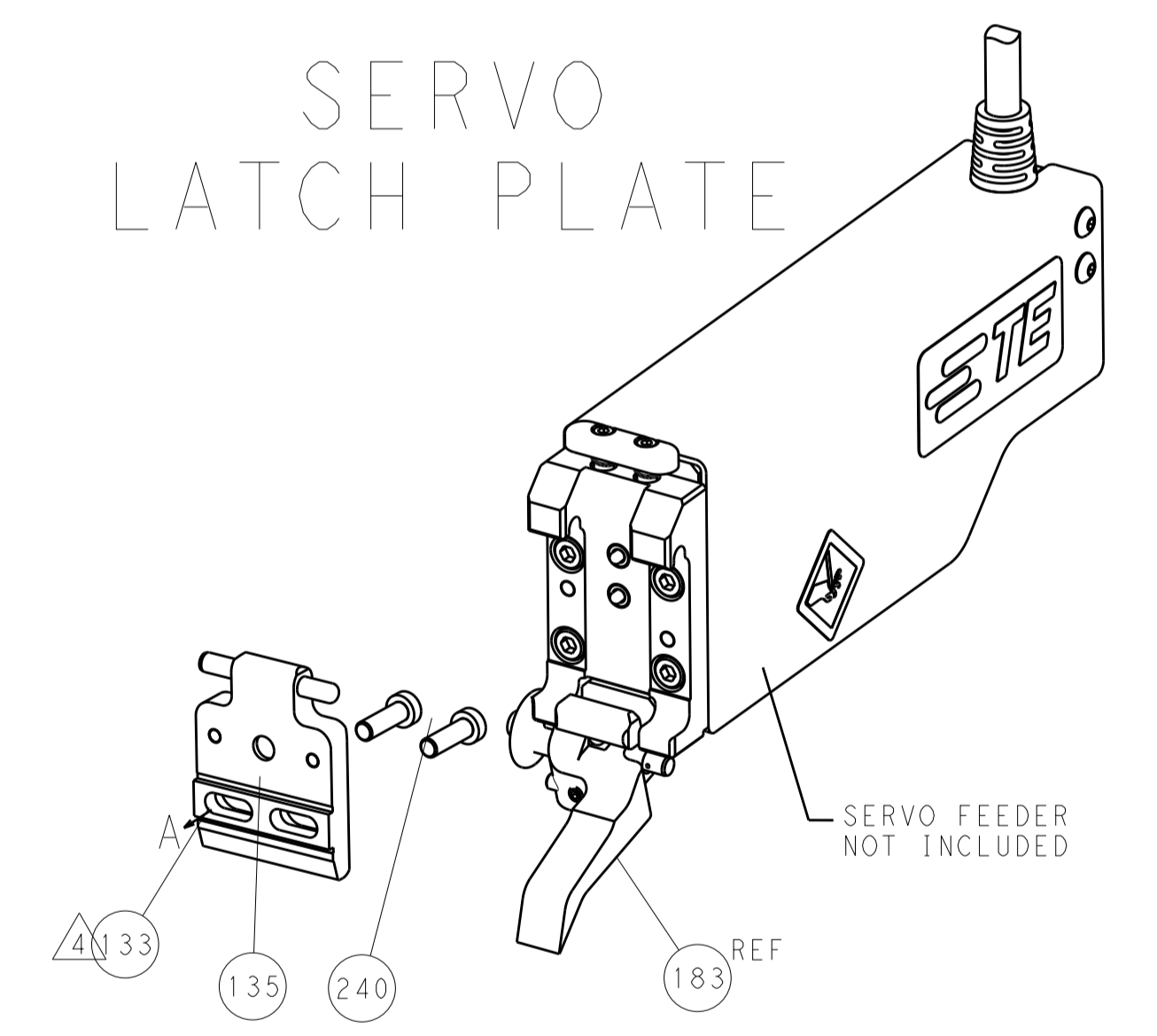
| LOC | DIST | REV | DATE | BY | APPV |
|-----------|------|-----|-------------|------|------|
| A | 66 | | | | |
| REVISIONS | | | DESCRIPTION | DATE | BY |
| - | | | SEE SHEET 1 | - | - |

FEED TYPE

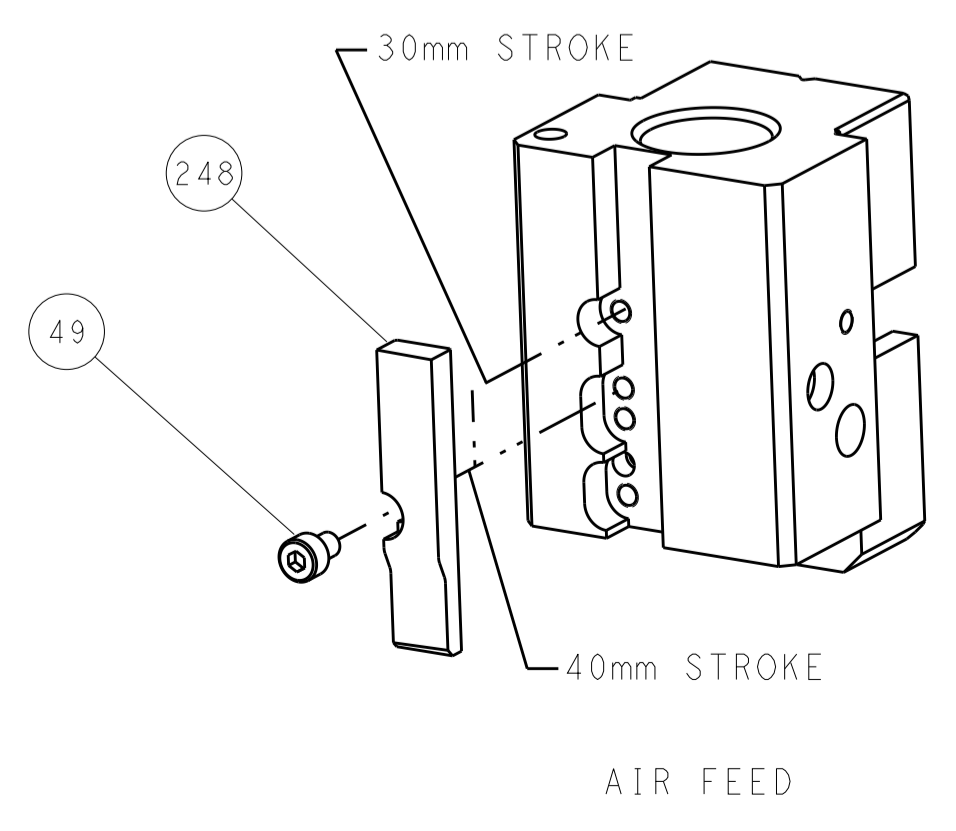
PNEUMATIC



SERVO LATCH PLATE



CAM POSITION



ATLANTIC VERSION
 Shown on sheets 1 of 4 & 2 of 4
 (Pacific version shown on sheets 3 of 4 & 4 of 4)

| | | | |
|--|--|--|--|
| <small>THIS DRAWING IS UNPUBLISHED. RELEASED FOR PUBLICATION BY TYCO ELECTRONICS CORPORATION. ALL RIGHTS RESERVED.</small> | | DWN: HOFFNER 11APRIL2012 CHK: T. ELBIN 12APRIL2012 APPV: T. ELBIN 12APRIL2012 | TE Connectivity Harrisburg, PA 17105-3608 |
| DIMENSIONS: mm TOLERANCES UNLESS OTHERWISE SPECIFIED: 0 PLC ±0.5 1 PLC ±0.13 3 PLC ±0.013 4 PLC ±0.001 ANGLES ±0.001 | | NAME: Ocean End Feed Applicator PRODUCT SPEC: - APPLICATION SPEC: - WEIGHT: - SCALE: 1:1 | SIZE: A1 CAGE CODE: 00779 DRAWING NO: C=2150252 SHEET 2 OF 4 REV A |
| MATERIAL: - FINISH: - | | RESTRICTED TO: - Customer Accessible Production Drawing | |

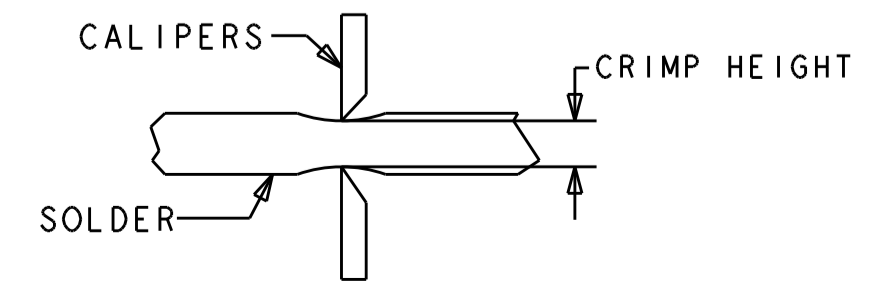
| PACIFIC VERSION TERMINATOR INTERFACE ADAPTER | PART NUMBER | REVISION | DESCRIPTION | FEED TYPE | APPLICATOR STYLE CONVERSION CHART | | | | | | |
|--|-------------|----------|--------------------------|--------------------------------|-----------------------------------|-----------------------|-----------|-------------|-----------|---|------------------------|
| | | | | | CONVERT TO | PART NUMBERS REQUIRED | | | | | |
| | 2-2150252-2 | A | FINE CRIMP HEIGHT ADJUST | PNEUMATIC | SERVO LATCH PLATE | 2119951-1 | 1901697-2 | 8-2150252-5 | - | - | 2168400-7 (QUANTITY 2) |
| | 2-2150252-5 | A | FINE CRIMP HEIGHT ADJUST | SERVO LATCH PLATE ⁴ | SMART APPLICATOR | 2161326-1 | - | 8-2150252-4 | - | - | - |
| | 2-2150252-7 | A | FINE CRIMP HEIGHT ADJUST | NONE | PNEUMATIC FEED | 2119950-1 | 2119792-1 | - | 2119641-2 | - | 2063440-1 |
| | 7-2150252-7 | A | CRIMP TOOLING KIT | - | - | - | - | - | - | - | - |

| APPLICATOR DATA | | |
|-------------------|------------------|------|
| CRIMP WIRE | SIZE | TYPE |
| INSUL | 5.11 mm [.201] | D |
| APPL INSTRUCTIONS | 408-10390 | |

| TERMINAL DATA: TE TERMINAL | | TE CRIMP SPECIFICATION | |
|--|-------------|---------------------------------|-------------|
| TERMINAL NAME: RECPT, ULTRA-FAST FLAG, .250 SERIES | | | |
| WIRE STRIP LENGTH | | INSULATION DIAMETER RANGE | |
| 7.51-8.33 mm [.296-.328 IN] | | ∅0.00-4.19 mm [1.000-.165 IN] | |
| TERMINAL APPLICATION SPECIFICATION | 114-2123 | | |
| TERMINALS APPLIED ⁹ | | | |
| TE TERMINAL | TE TERMINAL | TE TERMINAL | TE TERMINAL |
| 2-520128-2 | 2-521164-2 | 9-521164-2 | |

| WIRE SIZE | CRIMP HEIGHT mm [INCH] | CRIMP HEIGHT REFERENCE SETTING ⁸ | ∅ SOLDER ¹⁰ |
|--------------|------------------------------|---|------------------------|
| 18 OR (2) 22 | 1.79+/-0.05 [.070+/- .002] | 5.7 | .19 in [4.83mm] |
| 22 OR 20 | 1.65+/-0.05 [.065+/- .002] | 7.0 | .19 in [4.83mm] |

- RECOMMENDED SPARE PARTS
- GREASE BEARING SURFACES LIGHTLY
- 3. LUBRICATE DAILY PER THE APPLICATOR INSTRUCTION SHEET SUPPLIED WITH THE APPLICATOR.
- APPLICATOR SPECIFIC DATA TO BE ENTERED INTO BLANK MEMORY CHIP AT ASSEMBLY. SEE BELOW FOR PART NUMBER:
 PNEUMATIC FEED WITH "SMART APPLICATOR" CONVERSION: 8-2150252-4
 SERVO FEED WITH "FINE CRIMP HEIGHT ADJUST": 8-2150252-5
- 5. ADJUSTMENT OF THE STRIPPER MAY BE REQUIRED WHEN MOVING THE APPLICATOR BETWEEN BENCH AND LEADMAKER APPLICATIONS.
- GREASE THREADS, GROOVE AND O-RING ON ITEMS 139 & 153.
- MAGNET, ITEM 166 MUST BE ORIENTED CORRECTLY IN ORDER TO PROPERLY ACTUATE THE COUNTER.
- CRIMP HEIGHT REFERENCE SETTING WAS THE SETTING USED WHEN THE APPLICATOR WAS QUALIFIED AT THE FACTORY. ADJUSTMENT MAY BE NECESSARY WHEN RUNNING APPLICATOR IN THE FIELD.
- TERMINAL PITCH NOT COMPATIBLE WITH MECHANICAL FEED.
- TO CHECK CRIMP HEIGHT, CRIMP SOLDER (∅.19 IN [4.83mm] 60/40 SOLID CORE) AND MEASURE AT CENTER OF SLUG.



***WARNING**
 ON INSTALLATION, SET WIRE DISC, ITEM 40 TO LARGEST WIRE SIZE SETTING. USE OF SETTINGS BELOW MINIMUM REQUIRED CRIMP HEIGHT SETTING WILL CAUSE DAMAGE TO CRIMP TOOLING.

PACIFIC VERSION
 Shown on sheets 3 of 4 & 4 of 4
 (Atlantic version shown on sheets 1 of 4 & 2 of 4)

| SET UP GAUGE | LOC | DIST | REVISIONS | | | |
|--------------|-----|------|-----------|-------------|----|------|
| 2119599-2 | A | 66 | REV | DATE | BY | APPV |
| | | | - | SEE SHEET 1 | - | - |

| | | | | | | |
|---|-----|-----|-----|-------------|-------------------------------------|-----|
| - | 1 | 1 | 1 | 2119782-1 | FINE ADJUST HEAD ASM, PACIFIC STYLE | 251 |
| - | - | - | 1 | 2119640-1 | PUSH ROD, AIR FEED | 250 |
| - | - | - | 1 | 2079988-1 | BUSHING, LCH5-12, MISUMI | 249 |
| - | 1 | 1 | 1 | 1-22279-3 | SPRING, COMPRESSION | 246 |
| - | - | 2 | - | 2168400-7 | SHCS, LOW HEAD, RoHS, M5 X 10 | 240 |
| - | - | - | 1 | 2063440-1 | AIR FEED MODULE | 238 |
| - | 1 | 1 | 1 | 2119644-6 | RAM WASHER, PRECISION | 221 |
| - | - | 1 | - | 2119740-2 | TAG, IDENTIFICATION | 213 |
| - | 1 | 1 | 1 | 467281-1 | RETAINER, SHEAR, FLOATING | 207 |
| - | 1 | 1 | 1 | 2161936-1 | HOLDER, SHEAR, FLOATING | 206 |
| - | 1 | 1 | 1 | 467500-1 | SHEAR, FLOATING | 205 |
| - | 4 | 4 | 4 | 2079383-9 | SCR, BHSC, RoHS (M6 X 20) | 186 |
| - | - | REF | - | 1901697-2 | FEED FINGER ASSEMBLY, EF | 183 |
| - | - | - | 2 | 21045-3 | RING, RETAIN, EXTERN, 3/16 CRESCENT | 172 |
| - | 1 | 1 | 1 | 994969-1 | MAGNET, RARE EARTH HIGH ENERGY | 166 |
| - | REF | REF | REF | 994970-2 | COUNTER, MAGNETIC | 164 |
| - | - | - | 1 | 240638-1 | SPRING, FEED FINGER | 163 |
| - | 1 | 1 | 1 | 2161937-1 | STABILIZER | 154 |
| - | 1 | 1 | 1 | 8-21084-1 | O-RING, .801 ID, .070 DIA. MAT. | 153 |
| - | - | - | 1 | 2119641-2 | FEED CAM, AIR FEED | 152 |
| - | 1 | 1 | 1 | 2119798-2 | DETENT PIN | 145 |
| - | 1 | 1 | 1 | 2079383-8 | SCR, BHSC, RoHS (M4 X 16) | 144 |
| - | 1 | 1 | 1 | 1-2119655-6 | APPLICATOR BASIC ASSEMBLY, EF | 141 |
| - | 1 | 1 | 1 | 2119651-1 | RAM, ASIAN STYLE, END FEED | 140 |
| - | 1 | 1 | 1 | 2119092-2 | BOLT, ADJUSTMENT | 139 |
| - | - | - | 1 | 3-23627-7 | PIN, RETAIN, GRVD, 3/16 X .854 | 137 |
| - | - | REF | - | SEE NOTE 4 | MEMORY CHIP, PROGRAMMED | 135 |
| - | - | 1 | - | 1633743-1 | SERVO FEED LATCH ASM | 133 |
| - | 1 | 1 | 1 | 2119956-2 | DOCUMENTATION PACKAGE | 71 |
| - | 1 | 1 | 1 | 3-18032-3 | SCR, SET, FLT POINT M3 X 20.0 | 70 |
| - | 1 | 1 | 1 | 2-18032-2 | SCR, SET, FLT POINT M3 X 10.0 | 69 |
| - | 1 | - | 1 | 2119740-1 | TAG, IDENTIFICATION | 67 |
| - | 2 | 2 | 2 | 2168078-1 | SCREW, DRIVE, RH, RoHS | 66 |
| - | 2 | 2 | 2 | 2168400-5 | SHCS, LOW HEAD, RoHS, M4 X 20 | 64 |
| - | 1 | 1 | 1 | 2119793-1 | LIMITER, ADJUSTMENT BOLT | 63 |
| - | 3 | 3 | 3 | 992763-5 | SCR, SET, SOC, CONE POINT, M3 X 4.0 | 62 |
| - | 4 | 4 | 4 | 2168400-1 | SHCS, LOW HEAD, RoHS, M4 X 12 | 57 |
| - | 2 | 2 | 2 | 2168083-2 | SCR, SKT HD CAP, RoHS, M4 X 8.0 | 56 |
| - | 2 | 2 | 2 | 5018030-1 | NUT, HEX, REG, RoHS, M3 | 54 |
| - | 2 | 2 | 2 | 986965-8 | NUT, LOCK, HEX, TORQUE (M4) | 53 |
| - | - | - | 1 | 2161952-1 | PAWL, EF, AIR | 51 |
| - | - | - | 1 | 18023-9 | SCR, SKT HD CAP M4 X 6.0 | 49 |
| - | 1 | 1 | 1 | 2079383-7 | SCR, BHSC, RoHS (M8 X 25) | 41 |
| - | 1 | 1 | 1 | 2119645-1 | DISC, NUMBERED FA WIRE ADJUSTMENT | 40 |
| - | 1 | 1 | 1 | 2119957-1 | APPLICATOR SHIM PACK | 39 |
| - | 1 | 1 | 1 | 2119644-7 | RAM WASHER, PRECISION | 38 |
| - | 2 | 2 | 2 | 5-22278-1 | SPRING, COMPRESSION | 36 |
| - | 8 | 8 | 8 | 1-18028-2 | WASHER, FLAT, REG M4 | 33 |
| - | 2 | 2 | 2 | 2079383-4 | SCR, BHSC, RoHS (M4 X 8) | 31 |
| - | 2 | 2 | 2 | 1-2168083-0 | SCR, SKT HD CAP, RoHS, M4 X 10 | 29 |
| - | 1 | 1 | 1 | 240639-1 | STRIPPER (MACHINING) | 27 |
| - | 2 | 2 | 2 | 1-2168083-6 | SCR, SKT HD CAP, RoHS, M4 X 35 | 25 |
| - | 1 | 1 | 1 | 2161941-1 | PLATE, GUIDE, STRIP | 24 |
| - | 2 | 2 | 2 | 2-22281-3 | SPRING, COMPRESSION | 22 |
| - | 1 | 1 | 1 | 2161948-1 | DRAG | 20 |
| - | 1 | 1 | 1 | 683736-1 | GUIDE, STRIP, REAR | 19 |
| - | 1 | 1 | 1 | 683737-1 | FRONT STRIP GUIDE | 18 |
| - | 1 | 1 | 1 | 4-22280-7 | SPRING, COMPRESSION | 13 |
| - | 1 | 1 | 1 | 2161935-1 | ANVIL, RIGHT HAND | 8 |
| - | 1 | 1 | 1 | 2161957-1 | DEPRESSOR, SHEAR | 5 |
| - | 1 | 1 | 1 | 238009-1 | BLOCK, FL CRIMPER SPACER | 4 |
| - | 1 | 1 | 1 | 2161331-1 | SPACER, WIRE FUNNEL DEPRESSOR | 2 |
| - | 1 | 1 | 1 | 467342-1 | CRIMPER, RIGHT HAND | 1 |

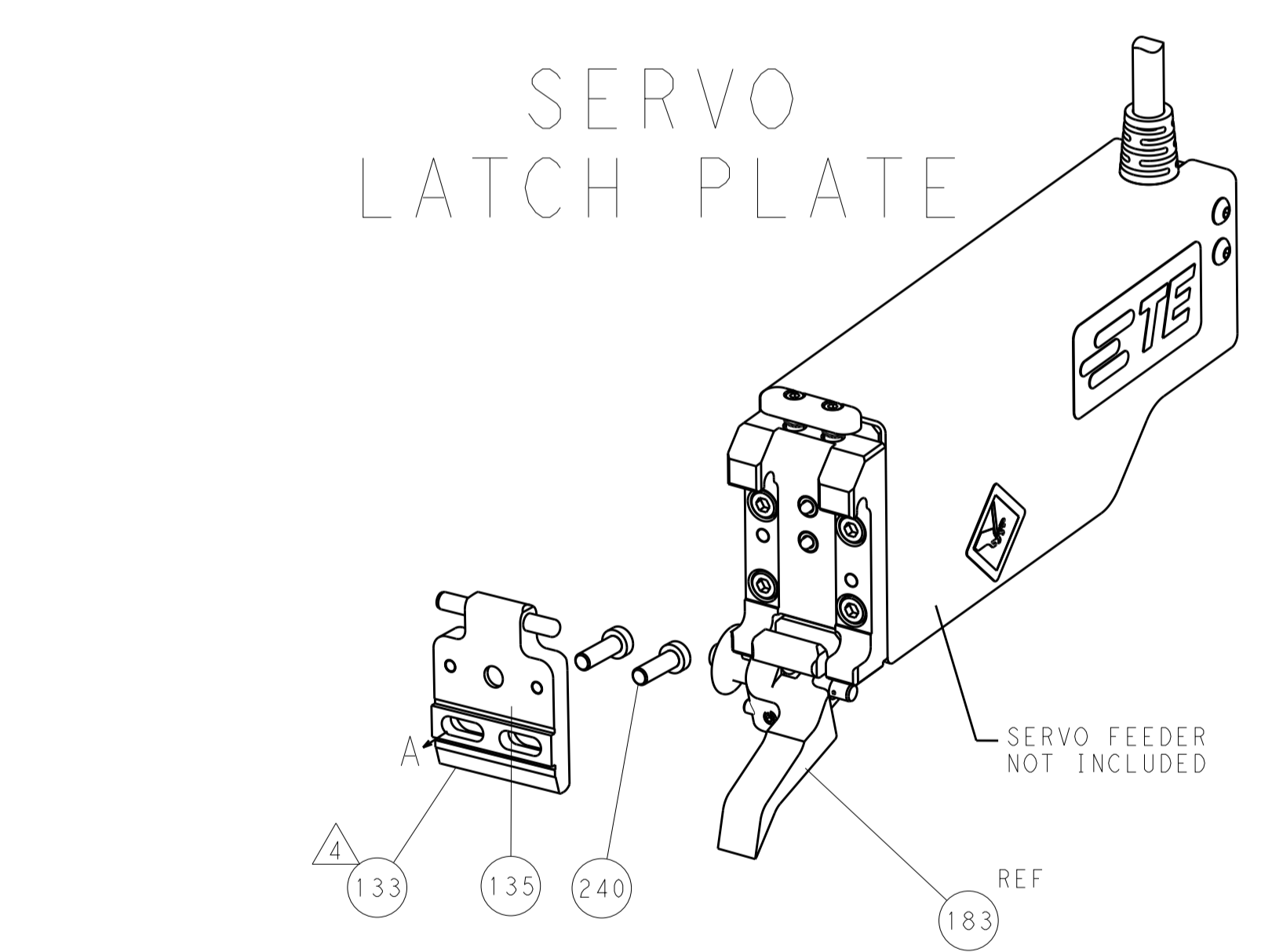
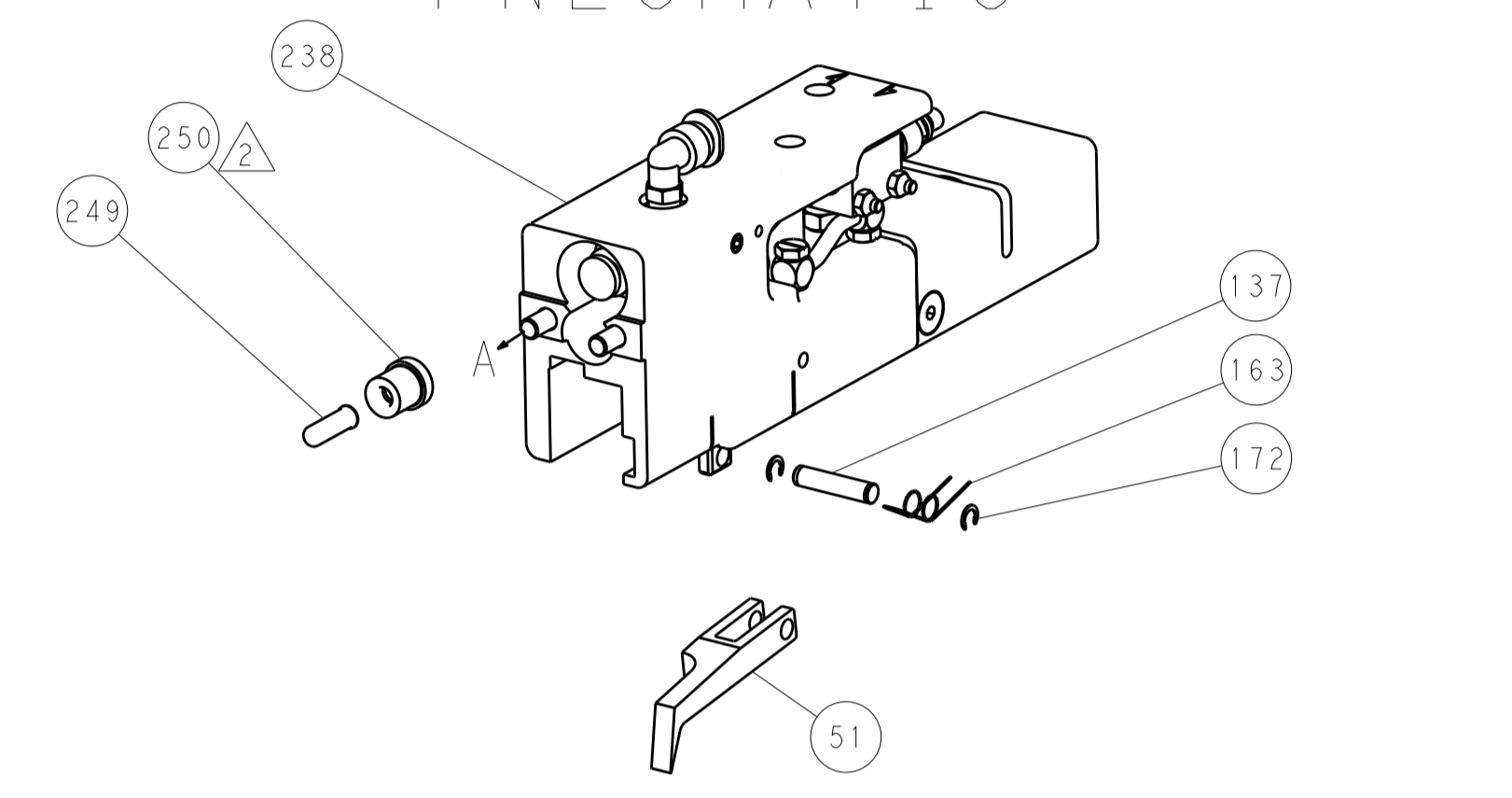
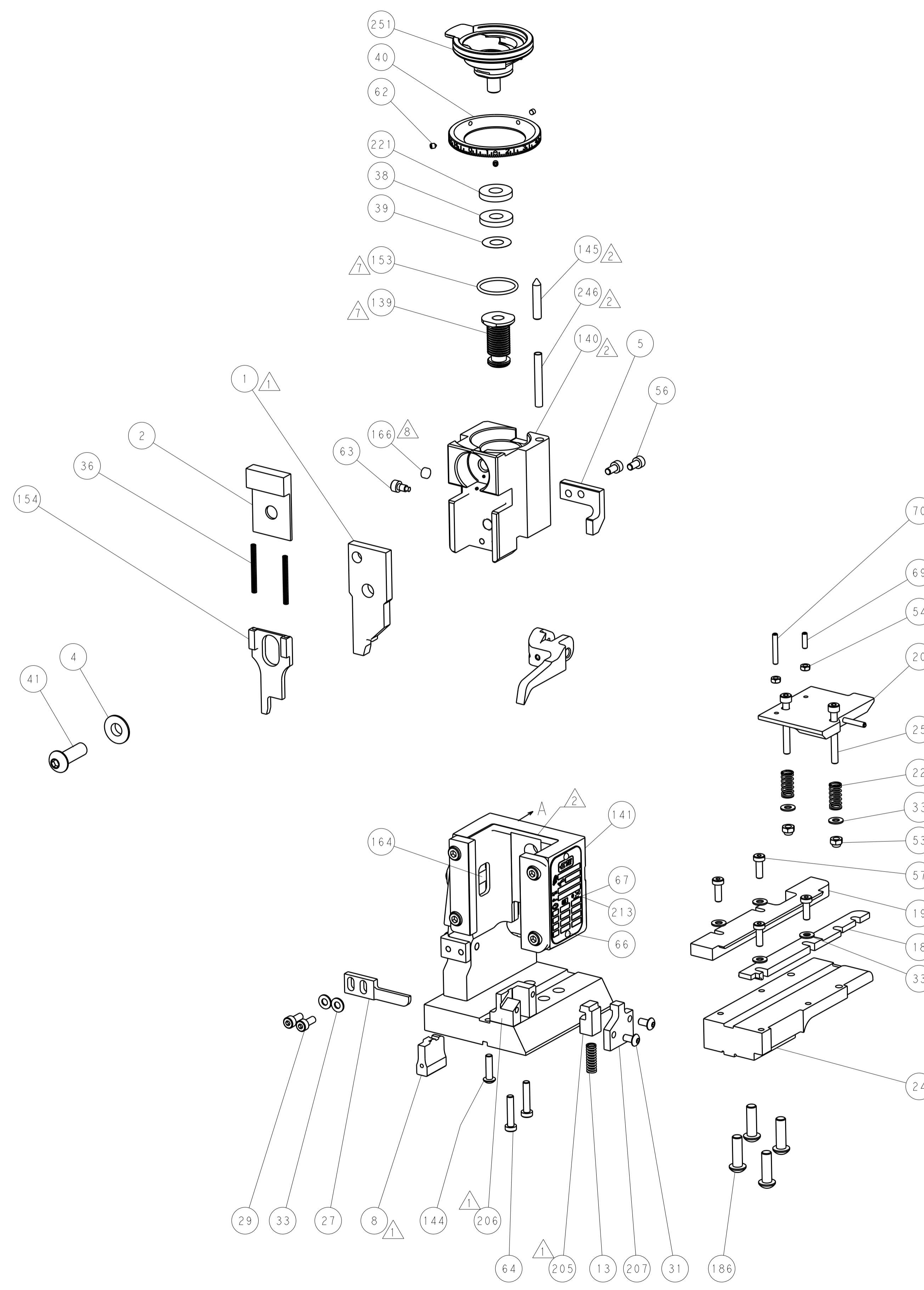
| DIMENSIONS: | | TOLERANCES UNLESS OTHERWISE SPECIFIED: | | DRAWING NO | |
|--|-----------|--|-------------|--------------|--------------|
| mm | 0 PLC ±.5 | 1 PLC ±.13 | 2 PLC ±.013 | 3 PLC ±.0013 | 4 PLC ±.0001 |
| ANGLES | FINISH | | SCALE | | |
| MATERIAL | FINISH | | SCALE | | |
| Customer Accessible Production Drawing | | | SCALE | SHEET | REV |
| Customer Accessible Production Drawing | | | SCALE 1:1 | SHEET 3 OF 4 | REV A |

| LOC | | DIST | | REVISIONS | | | |
|-----|----|------|-----|-------------|------|-----|------|
| A | 66 | P | LTM | DESCRIPTION | DATE | OWN | APVD |
| | | - | - | SEE SHEET 1 | - | - | - |

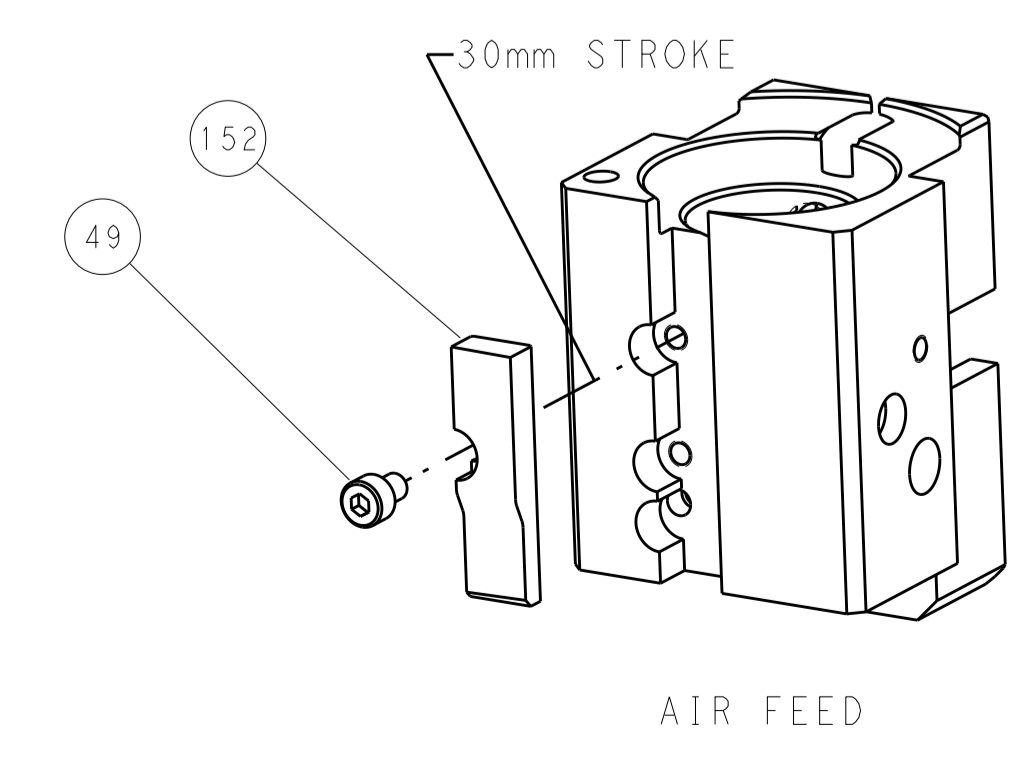
FEED TYPE

PNEUMATIC

SERVO LATCH PLATE



CAM POSITION



PACIFIC VERSION
 Shown on sheets 3 of 4 & 4 of 4
 (Atlantic version shown on sheets 1 of 4 & 2 of 4)

| | | | | | | | |
|-------------|--|--|--|--|--|---|--|
| DIMENSIONS: | | TOLERANCES UNLESS OTHERWISE SPECIFIED: | | OWN: HOFFNER 11APRIL2012 | | TE Connectivity | |
| mm | | 0 PLC ±0.5 | | CHK: T. ELBIN 12APRIL2012 | | Harrisburg, PA 17105-3608 | |
| Ø | | 1 PLC ±0.5 | | APVD: T. ELBIN 12APRIL2012 | | NAME: Ocean End Feed Applier | |
| H | | 2 PLC ±0.13 | | PRODUCT SPEC | | SIZE: CAGE CODE DRAWING NO: RESTRICTED TO | |
| D | | 3 PLC ±0.013 | | APPLICATION SPEC | | A1 00779 C=2150252 | |
| R | | 4 PLC ±0.0001 | | WEIGHT | | SCALE: 1:1 SHEET 4 OF 4 REV A | |
| ANGLES | | FINISH | | Customer Accessible Production Drawing | | Customer Accessible Production Drawing | |