

6

5

4

3

2

1

MATERIAL AND FINISH:

Insulator: Nylon 66, color black, UL-94V-2

Contacts: Copper Alloy, Tin plated

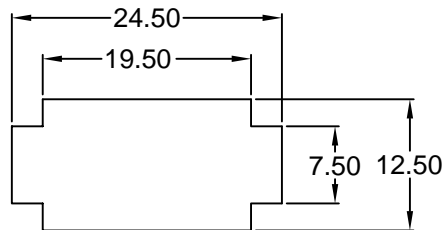
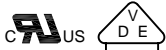
ELECTRICAL SPECIFICATIONS:

Rated current: 2.5A

Rated voltage: 250VAC

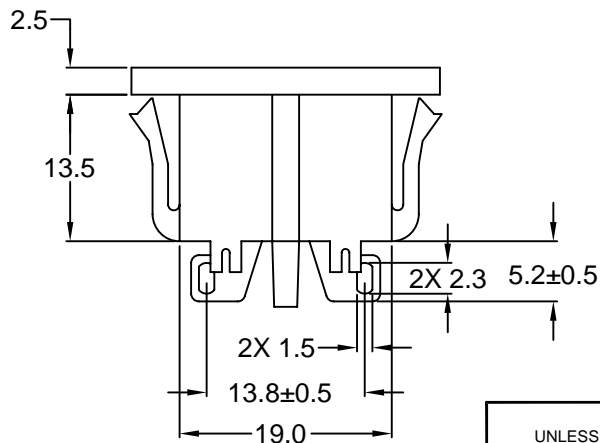
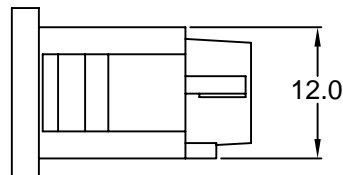
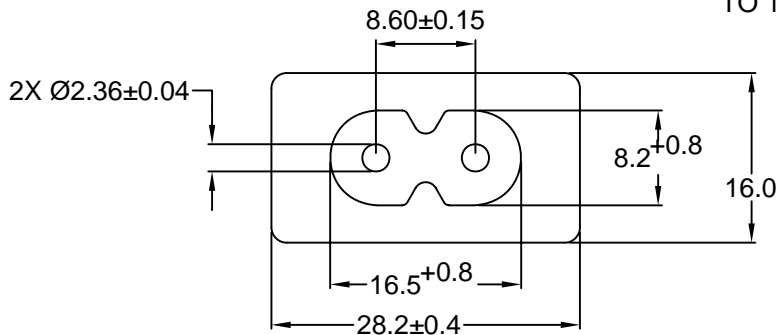
Insulation resistance: 100 Mohm min. @ 500VDC

Dielectric withstanding voltage: 2000VAC for one minute



**RECOMMENDED
PANEL CUTOUT**
PANEL THICKNESS: 0.8 mm MIN.
TO 1.3 mm MAX.

RoHS
COMPLIANT



REVISIONS

| REV | DATE | CHANGE | CHNG | CHK | APPR |
|-----|----------|-------------------|------|-----|------|
| A | 4/10/00 | REVISED / REDRAWN | PB | JJ | SS |
| B | 5/9/00 | REVISED DIM TOL. | TD | JJ | SS |
| C | 11/09/01 | REVISED / UPDATED | GO | TD | PB |

| TOLERANCE UNLESS OTHERWISE SPECIFIED | |
|---|--------|
| X | ± 1 |
| X.X | ± 0.4 |
| X.XX | ± 0.20 |

Power Dynamics, Inc.

Phone: 973 560-0019 Whippany, New Jersey Fax: 973 560-0076

PART: MINIATURE IEC 60320 C8 APPL. INLET;
SNAP-IN, SOLDER TERMINALS

| | | | |
|----------|----|-------|--------|
| DRAWN BY | AH | DATE: | 8/6/98 |
| CHECK BY | LH | DATE: | 8/6/96 |
| APPR BY | SS | DATE: | 8/6/99 |

| | | | |
|---------------------------|--|--------|--------|
| PART #: 42R51-5128 | | SHEET | 1 of 1 |
| SIZE: A | ALL DIMENSIONS FOR REFERENCE ONLY DIMENSIONS ARE IN MILLIMETERS | REV: C | |
| SCALE: NTS | | | |

6

5

4

3

2

1