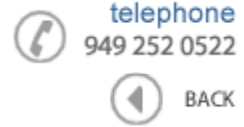




**Data Sheet**



Product Category: Ceramic Resonator

Series Number  
643

Package  
F-11 Narrow Band

Description  
Two-Port SAW

Last Modified  
Jan. 01 2002

**FEATURES**

- Quartz Stability
- Industry standard package



**OPERATING CONDITIONS / ELECTRICAL CHARACTERISTICS**

PARAMETERS	SYMBOL	CHARACTERISTICS	UNITS
Center Frequency	F <sub>c</sub>	418.0 ~ 434.0 ±0.075	MHz
Insertion Loss	IL	6.0	dB
Unloaded Q	-	13000	-
50 Ohms Loaded Q	-	6000	-
Turnover Temperature	T <sub>o</sub>	35	°C
Freq. Temp. Coefficient	FTC	0.037	PPM/°C
Frequency Aging	f <sub>A</sub>	10 max. typ.	PPM/Y
DC Insulation Resistance	Between any 2 pins	1 min.	Mohm
Turnover Frequency	F <sub>o</sub>	F <sub>c</sub> ±21	KHz
Operating Temperature	T <sub>OPR</sub>	-10 to +60	°C
Package	-	F-11	-

**PACKAGE DIMENSIONS (mm)**

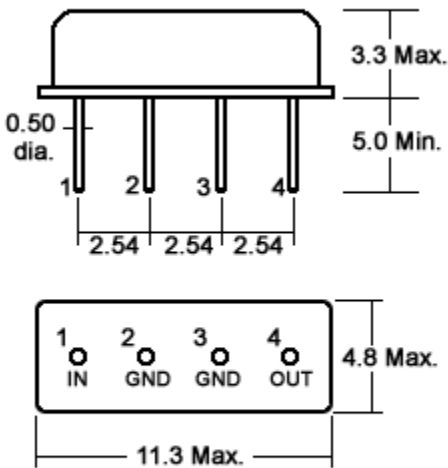


Figure 1) Side, and Bottom Views

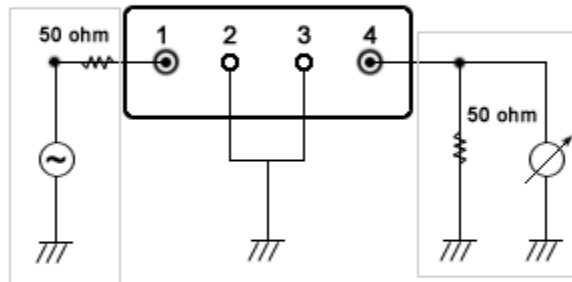


Figure 2) Test Circuit

**PART NUMBER GUIDE**

Part Number	Frequency
<a href="#">643-418.0M</a>	418.0 MHz
<a href="#">643-433.42M</a>	433.42
<a href="#">643-434.0M</a>	434.0

**NOTE:** Deviations on all parameters available. Please consult Oscilent for details.

**DEFINITIONS:** Click on the characteristic names above, for definitions of the particular characteristic.

**Oscilent Corporation** - CALL **949.252.0522**

**Series No.:** **643**

17962 Sky Park Circle , Building D , Irvine , CA 92614 , USA  
Fax: 949.252.0599 , E-Mail: [Sales@Oscilent.com](mailto:Sales@Oscilent.com)

---

[Crystal Oscillators](#) | [Quartz Crystal](#) | [TCXO](#) | [VCXO](#) | [IF SAW Filter](#) | [RF SAW Filter](#) | [Ceramic Resonator](#)  
[Crystal Filter](#) | [Ceramic Filter](#) | [SAW Filter / SAW Devices](#) | [Site Map](#)