

P/N	FREQUENCY	VSWR MAX	R.F INS LOSS	PHASE SHIFT	CONNECTORS	(L)	(W)	(HEIGHT)	(A)
5050-2	DC TO 2.0 GHZ	1.15:1	0.3dB MAX AT 2.0 GHZ	85° MIN AT 2.0 GHZ	SMA-M/SMA-M	2.677 [68]	1.654 [42]	.500 [12.7]	1.456 [37]
5051-2					SMA-M/SMA-F				
5052-2					SMA-F/SMA-F				
5054-2	DC TO 12.0 GHZ	1.20:1	0.3dB MAX AT 2.0 GHZ	85° MIN AT 2.0 GHZ	N-M/N-M	2.677 [68]	1.654 [42]	.866 [22]	1.456 [37]
5055-2					N-M/N-F				
5056-2					N-F/N-F				
5057-2					TNC-M/TNC-M				
5058-2					TNC-M/TNC-F				
5059-2					TNC-F/TNC-F				
5050-12	DC TO 12.0 GHZ	1.25:1	0.8dB MAX AT 12.0 GHZ	520° MIN AT 12.0 GHZ	SMA-M/SMA-M	2.677 [68]	1.575 [40]	.500 [12.7]	1.378 [35]
5051-12					SMA-M/SMA-F				
5052-12					SMA-F/SMA-F				
5054-12	DC TO 10.5 GHZ	1.30:1	0.8dB MAX AT 12.0 GHZ	520° MIN AT 12.0 GHZ	N-M/N-M	2.677 [68]	1.654 [42]	.866 [22]	1.456 [37]
5055-12					N-M/N-F				
5056-12					N-F/N-F				
5057-12	DC TO 12.0 GHZ	1.30:1	0.8dB MAX AT 12.0 GHZ	520° MIN AT 12.0 GHZ	TNC-M/TNC-M	2.677 [68]	1.654 [42]	.866 [22]	1.456 [37]
5058-12					TNC-M/TNC-F				
5059-12					TNC-F/TNC-F				
5050-18	DC TO 18.0 GHZ	1.35:1	1.0dB MAX AT 18.0 GHZ	770° MIN AT 18.0 GHZ	SMA-M/SMA-M	2.677 [68]	1.575 [40]	.500 [12.7]	1.378 [35]
5051-18					SMA-M/SMA-F				
5052-18					SMA-F/SMA-F				
5053-18	DC TO 18.0 GHZ	1.40:1	1.0dB MAX AT 18.0 GHZ	770° MIN AT 18.0 GHZ	7MM/7MM	2.677 [68]	2.756 [70]	1.181 [30]	2.559 [65]
5054-18					N-M/N-M	2.677 [68]	1.654 [42]	.866 [22]	1.456 [37]
5055-18					N-M/N-F				
5056-18					N-F/N-F				
5057-18					TNC-M/TNC-M				
5058-18					TNC-M/TNC-F				
5059-18	TNC-F/TNC-F								

REVISIONS				
ZONE	REV	DESCRIPTION	DATE	BY
-	-	-	-	-

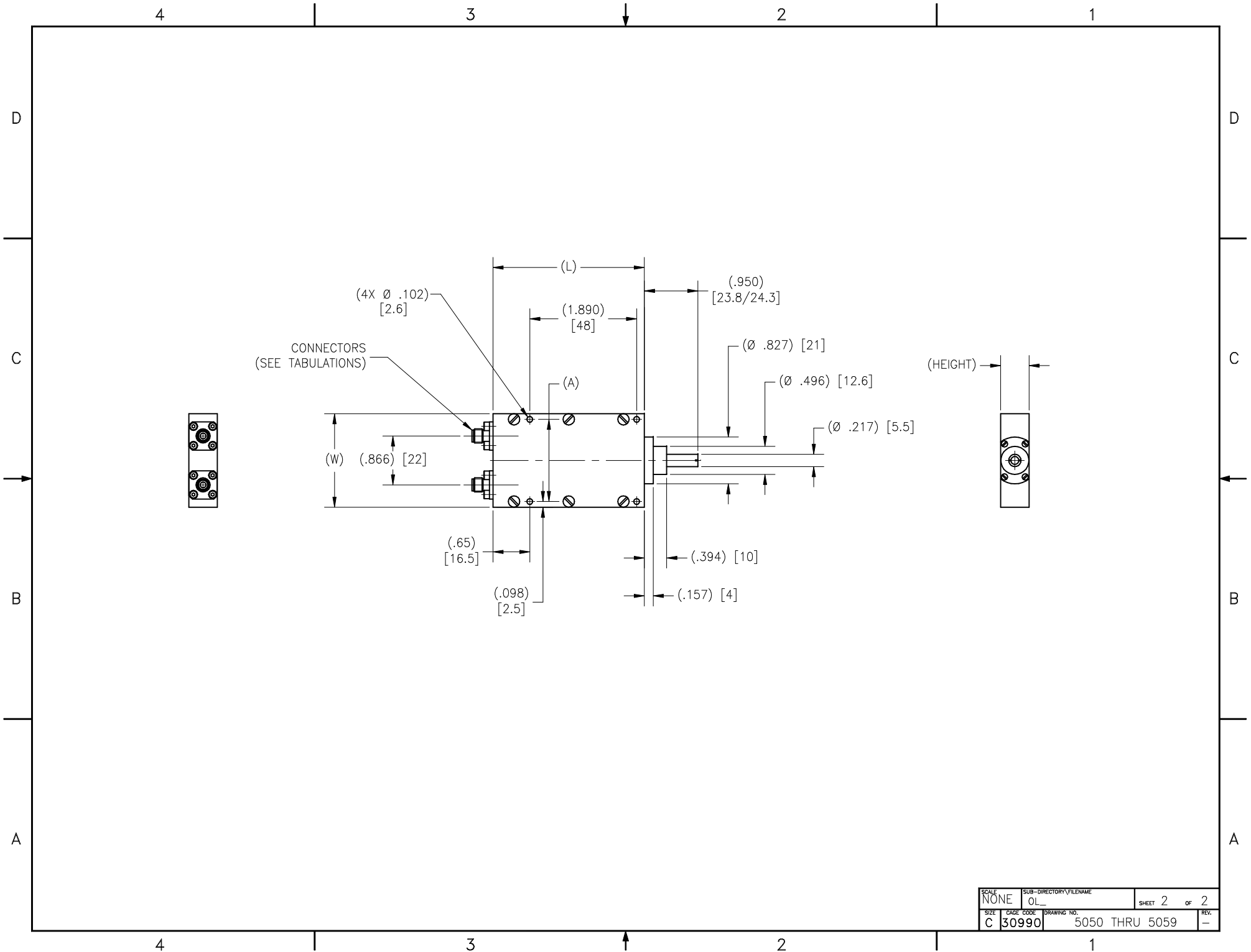
DRAWING NO.	REV.
5050 THRU 5059	-

TOLERANCES AND NOTES EXCEPT AS NOTED
 DIMENSIONS ARE IN INCHES.
 .XX ±.015
 LINEAR .XXX ±.005 ANGULAR ± 1/2°
 FRACTION ± 1/32

- MACHINE FINISH: 63/ RMS
- BREAK ALL SHARP EDGES .003 MAX.
- MACHINED FILLETS .005 MAX.
- MACHINED SURFACES SQUARE TO RESPECTIVE AXIS WITHIN .005 INCHES PER INCH.
- MACHINED DIAMETERS CONCENTRIC WITHIN .002 T.I.R.
- DIMENSIONS TO BE MET BEFORE PLATING.
- CHAMFER ALL THREADS 45°.
- THREADS PER 11-29
- REMOVE FRAYED EDGES ON TEFLON.
- REMOVE ALL BURRS.

NOTICE
 THIS DRAWING EMBODIES A CONFIDENTIAL PROPRIETARY DESIGN ORIGINATED BY TENSOLITE COMPANY AND ALL DESIGN, MANUFACTURING REPRODUCTION, USE AND SALE RIGHTS REGARDING THE SAME ARE EXPRESSLY RESERVED. IT IS SUBMITTED UNDER A CONFIDENTIAL RELATIONSHIP FOR A SPECIFIED PURPOSE AND THE RECIPIENT AGREES BY ACCEPTING THIS DRAWING NOT TO SUPPLY OR DISCLOSE ANY INFORMATION REGARDING IT TO ANY UNAUTHORIZED PERSON OR TO INCORPORATE IN OTHER PROJECTS ANY SPECIAL FEATURES PARTICULAR TO THIS DESIGN. ALL PATENT RIGHTS HERETO ARE EXPRESSLY RESERVED BY TENSOLITE COMPANY, LONG BEACH, CALIFORNIA 90815.

SEE TABULATIONS	-	SEE TABULATIONS	-
MATERIAL	SIZE	SPECIFICATION	PROCUREMENT
NEXT ASSY	HIGH PERFORMANCE CABLES & INTERCONNECT SYSTEMS Long Beach, California 90815		
APPROVAL INITIALS	DATE	TITLE	
DRAWN BY: DKN	05.15.00	PHASE ADJUSTER	
CHECKED		SCALE	SUB-DIRECTORY/FILENAME
QUALITY		NONE	OL_
ENGINEERING: MP	05.15.00	SIZE	CAGE CODE
		C 30990	DRAWING NO.
			5050 THRU 5059
			SHEET 1 OF 2
			REV.
			-



SCALE	SUB-DIRECTORY/FILENAME		SHEET 2 of 2
NONE	OL_		
SIZE	CAGE CODE	DRAWING NO.	REV.
C	30990	5050 THRU 5059	-