

PLEASE CHECK WWW.MOLEX.COM FOR LATEST PART INFORMATION

Part Number: **0359410200**
Status: **Active**
Description: 4.75mm (.187") Tab Housing, 15.20mm (.598") Pitch, Positive Latch, for Drain Motor, 2 Circuits, UL94V-2, White

Documents:

3D Model	Product Specification PS-35941-001 (PDF)
Drawing (PDF)	RoHS Certificate of Compliance (PDF)

General

Product Family	Crimp Housings
Series	35941
Product Name	N/A

Physical

Circuits (maximum)	2
Color - Resin	Natural
Gender	Female
Glow-Wire Compliant	No
Lock to Mating Part	Yes
Material - Resin	Polyester Alloy
Number of Rows	1
Packaging Type	Bag
Panel Mount	No
Pitch - Mating Interface (in)	0.598 In
Pitch - Mating Interface (mm)	15.20 mm
Polarized to Mating Part	Yes
Temperature Range - Operating	-40°C to +105°C

Electrical

Current - Maximum per Contact	10A
-------------------------------	-----

Material Info

Reference - Drawing Numbers

Product Specification	PS-35941-001
Sales Drawing	SD-35941-001

EU RoHS

ELV and RoHS Compliant

REACH SVHC

Not Reviewed

Halogen-Free

Status

Not Reviewed

China RoHS



Need more information on product environmental compliance?

Email productcompliance@molex.com
 For a multiple part number RoHS Certificate of Compliance, [click here](#)

Please visit the [Contact Us](#) section for any non-product compliance questions.

Search Parts in this Series

[35941Series](#)

Mates With

[Drain Motor Interface](#)

Use With

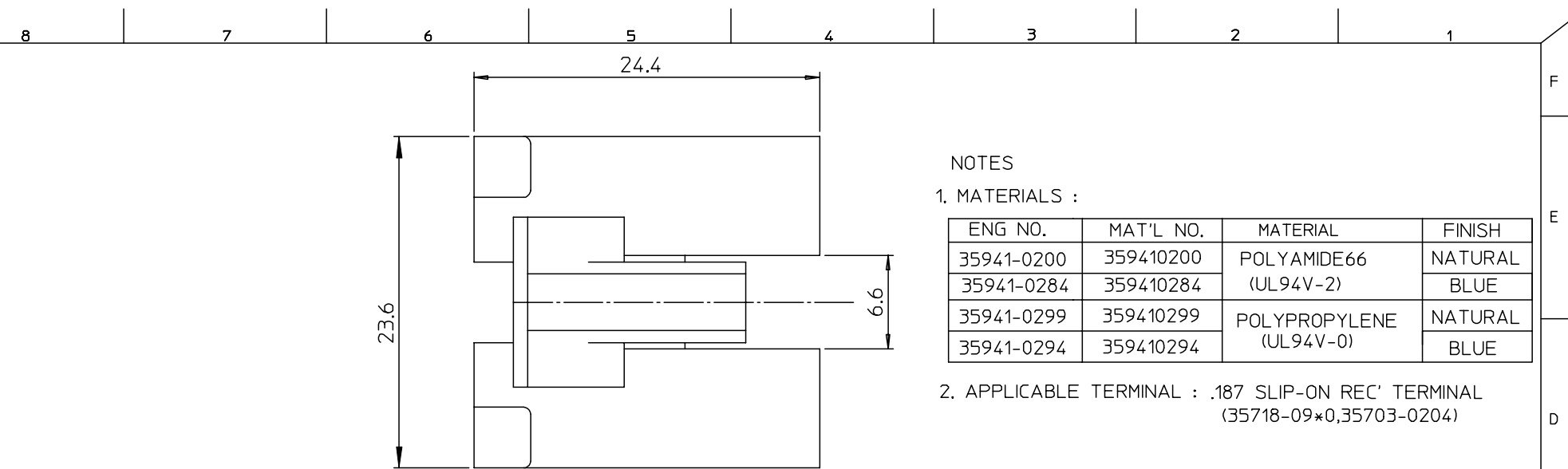
[35703-0204 Terminal](#), [35718-0900 Terminal](#), [35718-0910 Terminal](#)

DWG. NO.
SD-35941-001

SIMILAR ITEM

PROJECT NO.

DO NOT SCALE DRAWING
DIMENSION IN METRIC

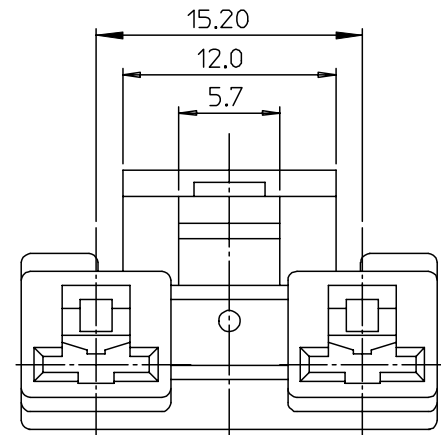
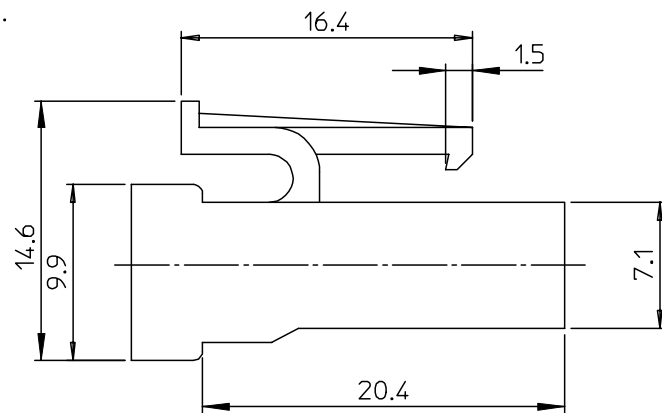
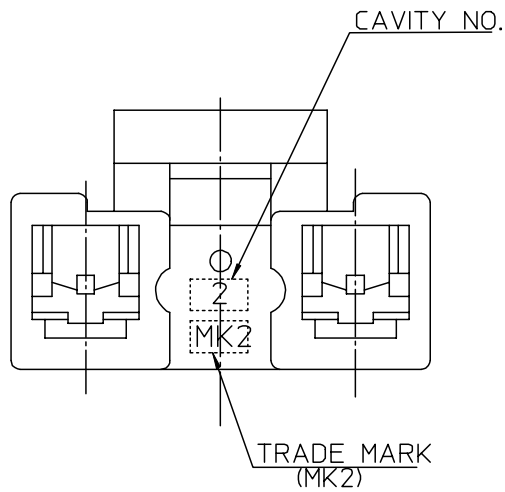


NOTES

1. MATERIALS :

ENG NO.	MAT'L NO.	MATERIAL	FINISH
35941-0200	359410200	POLYAMIDE66 (UL94V-2)	NATURAL
35941-0284	359410284		BLUE
35941-0299	359410299	POLYPROPYLENE (UL94V-0)	NATURAL
35941-0294	359410294		BLUE

2. APPLICABLE TERMINAL : .187 SLIP-ON REC' TERMINAL
(35718-09*0,35703-0204)



REVISED	ECN NO. KOR2004-0073	QUALITY SYMBOLS MAJOR $\blacktriangledown = 0$ CRITICAL $\nabla = 0$	GENERAL TOLERANCES: (UNLESS SPECIFIED)		SCALE 4:1	DESIGN UNITS <input checked="" type="checkbox"/> mm <input type="checkbox"/> INCH	THIRD ANGLE PROJECTION	DIMENSIONS: <input type="checkbox"/> mm <input type="checkbox"/> INCH <input checked="" type="checkbox"/> mm ONLY	SHT	REV
	DRWN: C.B.CHIN 04/05/14		4 PLACES $\pm 0.$	$\pm -$	DRAWN BY & DATE W.Y.YNAG 99/11/14	TITLE: .187 HOUSING-2P (FOR DRAIN MOTOR)				
	CHK: W.Y.YANG		3 PLACES $\pm 0.$	$\pm -$	CHECKED BY & DATE B.K.CHOI 99/11/14	MOLEX INCORPORATED				
	APPR: C.W.LEE		2 PLACES ± 0.30	$\pm -$	APPROVED BY & DATE C.W.LEE 99/11/14	CAD FILENAME S9410200.MI	MATERIAL NO. SEE NOTES	DRAWING NO. SD-35941-001	SHEET NO. 1 OF 1	
B	REV	DESCRIPTION	1 PLACE ± 0.30	$\pm -$	DRAFT WHERE APPLICABLE MUST REMAIN WITHIN DIMENSIONS		THIS DRAWING CONTAINS INFORMATION THAT IS PROPRIETARY TO MOLEX INCORPORATED AND SHOULD NOT BE USED WITHOUT WRITTEN PERMISSION.			SIZE B