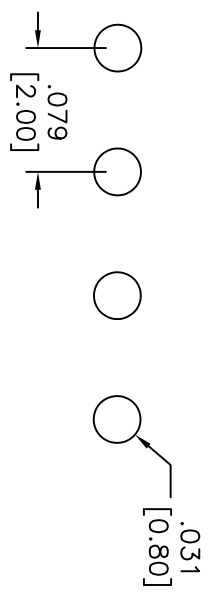
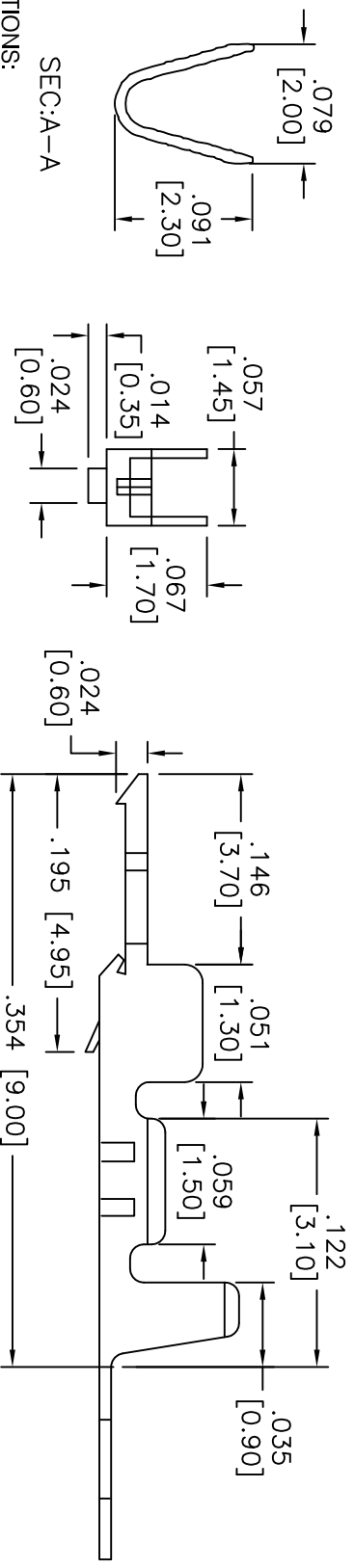
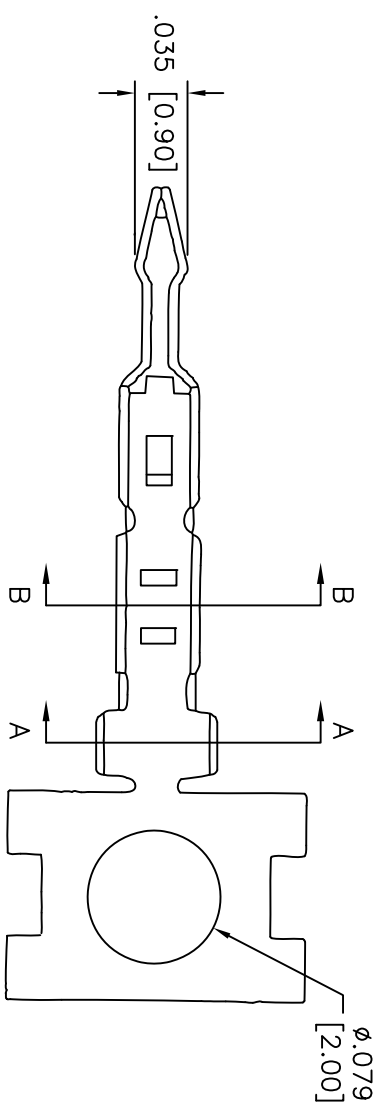


Rev	AWO #	Description	Date	Appr
-		RELEASED	10/14/10	

APPROVED: \_\_\_\_\_  
 DATE: \_\_\_\_\_ TITLE: \_\_\_\_\_



RECOMMENDED PCB LAYOUT



SEC:A-A

SEC:B-B

**SPECIFICATIONS:**

Material: Brass  
 Plating: Matt Tin Plated  
 Thickness: 0.2mm  
 Wire Range: AWG#24~#30  
 Applicable P.C.B. thickness: .063" [1.60mm]  
 Specification:  
 Voltage Rating: 250V AC,DC  
 Current Rating: 2A AC,DC max.  
 Dielectric withstanding voltage: 800V AC/minute  
 Operating temperature: -25°C to +85°C  
 Environmental:  
 Lead free, RoHS compliant.

**ADAM TECH**

909 Railway Avenue, Union, NJ 07083  
 Phone: 908-687-5000 Fax: 908-687-5710

CRIMP CONTACT, MATT TIN PLATED

UNLESS OTHERWISE SPECIFIED ALL DIMENSIONS ARE INCHES [MM]	
TOLERANCES: EXCEPT AS NOTED	
INCHES	HOLDS
.X ± .10	ØX ± .10
.XX ± .020	ØXX ± .015
.XXX ± .015	ØXXX ± .010
APPROVALS	DATE
DRAWN	DY
CHECKED	
APPROVED	

SIZE	PART NO.	REV.
X	2CTZ-MT-R	-
REF: S00123T	SCALE: NTS	SHEET 1 OF 1