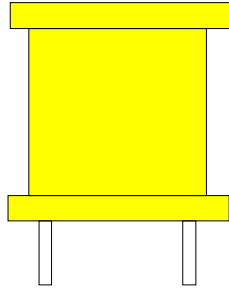


# Power Line Chokes Drum Core Style



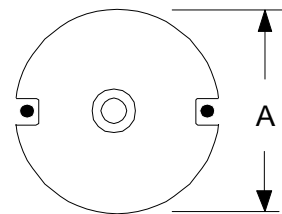
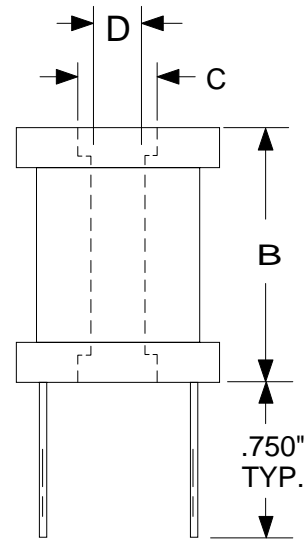
## Applications

Power Amplifiers  
Filters • Power Supplies  
SCR and Triac Controls  
Speaker Crossover Networks  
RFI Suppression

Part Number	L ± 20% ( $\mu$ H)	DCR Nom. ( $m\Omega$ )	I Max. (A)	Lead Size AWG	Pkg. Code
L-12200	2.0	5	16.4	14	1
L-12202	4.0	10	10.3	16	1
L-12203	8.0	12	8.2	17	1
L-12204	18	13	8.2	17	1
L-12205	22	16	6.5	18	1
L-12206	30	21	5.2	19	1
L-12207	40	32	4.0	20	1
<hr/>					
L-12401	15	8	13.0	15	2
L-12402	20	11	10.3	16	2
L-12403	30	17	8.2	17	2
L-12406	38	25	6.5	18	2
L-12407	50	28	6.0	18	2
L-12408	70	38	5.2	19	2
L-12411	100	59	4.1	20	2
<hr/>					
L-12220	5.0	8	16.0	15	3
L-12221	20	13	12.9	16	3
L-12222	30	19	8.5	17	3
L-12223	50	25	6.8	18	3
L-12224	80	42	5.4	19	3
L-12225	120	53	5.0	19	3
L-12226	180	72	4.3	20	3
L-12227	200	105	4.1	20	3

## Pre-Tinned Leads

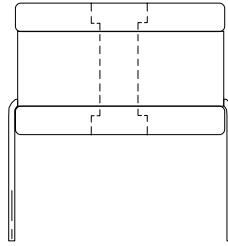
Center hole for mechanical mounting  
Coils finished with Polyolefin Shrink Tube  
Test Frequency 1 kHz



Flammability: Materials used in the production of these units are UL94-VO and meet requirements of IEC 695-2-2 needle flame test.

Pkg. Code	( Dimensions in inches )			
	A	B	C	D
1	0.560	0.810	0.187	0.126
2	0.709	0.795	0.187	0.126
3	0.709	0.866	0.187	0.126

# Power Line Chokes Drum Core Style



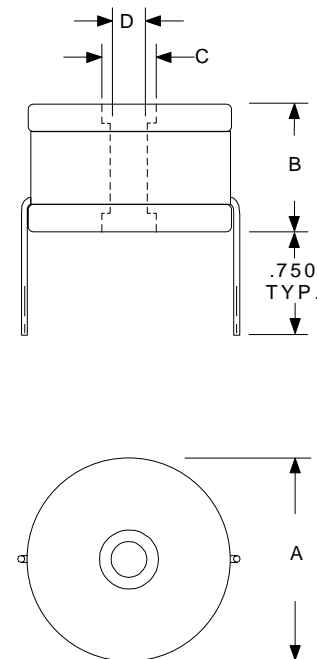
## Applications

Power Amplifiers  
Filters • Power Supplies  
SCR and Triac Controls  
Speaker Crossover Networks  
RFI Suppression

### Pre-Tinned Leads

Center hole for mechanical mounting  
Coils finished with Polyolefin Shrink Tube  
Test Frequency 1 kHz

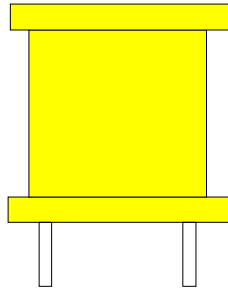
Part Number	L ± 20% ( $\mu$ H)	DCR Nom. ( $m\Omega$ )	I Max. (A)	Lead Size AWG	Pkg. Code
L-12420	5.0	4	16.4	14	4
L-12421	10	5	13.0	15	4
L-12423	15	9	10.3	16	4
L-12425	25	16	8.2	17	4
L-12428	50	33	5.2	19	4
L-12430	70	48	4.1	20	4
L-12431	100	58	4.1	20	4
L-12433	150	92	3.2	21	4
<hr/>					
L-12440	10	5	21.6	14	5
L-12441	15	8	17.1	15	5
L-12442	25	15	13.2	16	5
L-12443	50	19	12.8	16	5
L-12445	75	29	10.8	17	5
L-12446	100	40	8.5	18	5
L-12447	180	46	8.0	18	5
L-12450	280	75	6.8	19	5
L-12452	450	131	5.4	20	5



Flammability: Materials used in the production of these units are UL94-VO and meet requirements of IEC 695-2-2 needle flame test.

Pkg. Code	( Dimensions in inches )			
	A	B	C	D
4	0.866	0.570	0.267	0.147
5	0.866	0.728	0.267	0.147

# Power Line Chokes Drum Core Style



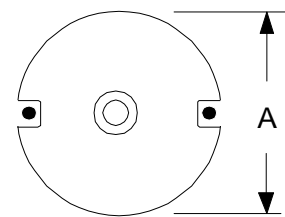
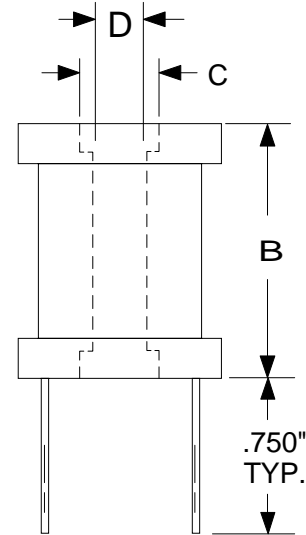
## Applications

Power Amplifiers  
Filters • Power Supplies  
SCR and Triac Controls  
Speaker Crossover Networks  
RFI Suppression

Part Number	L ± 20% ( $\mu$ H)	DCR Nom. (m $\Omega$ )	I Max. (A)	Lead Size AWG	Pkg. Code
L-12470	18	5	24.0	14	6
L-12471	30	13	18.0	15	6
L-12472	50	25	15.0	16	6
L-12473	80	33	13.2	17	6
L-12474	120	36	13.0	17	6
L-12475	200	57	10.1	18	6
L-12478	300	85	8.0	19	6
L-12480	450	136	6.1	20	6
L-12481	680	170	6.0	20	6
<hr/>					
L-12235	40	13	24.5	14	7
L-12236	60	19	18.0	15	7
L-12237	100	28	16.0	15	7
L-12239	150	38	13.5	16	7
L-12242	250	73	11.0	18	7
L-12243	380	86	8.5	18	7
L-12245	580	120	6.0	20	7
L-12247	880	200	5.4	20	7
<hr/>					
L-12490	45	12	25.0	14	8
L-12492	70	18	18.8	15	8
L-12493	120	35	13.9	16	8
L-12495	185	50	12.0	17	8
L-12497	280	78	9.5	18	8
L-12500	450	130	7.5	19	8
L-12503	700	198	4.1	20	8

## Pre-Tinned Leads

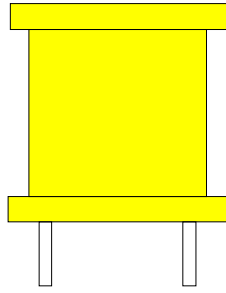
Center hole for mechanical mounting  
Coils finished with Polyolefin Shrink Tube  
Test Frequency 1 kHz



Flammability: Materials used in the production of these units are UL94-VO and meet requirements of IEC 695-2-2 needle flame test.

Pkg. Code	( Dimensions in inches )			
	A	B	C	D
6	0.949	0.795	0.187	0.126
7	0.955	0.975	0.187	0.126
8	1.100	0.805	0.237	0.175

# Power Line Chokes Drum Core Style



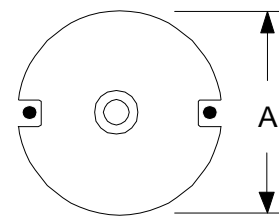
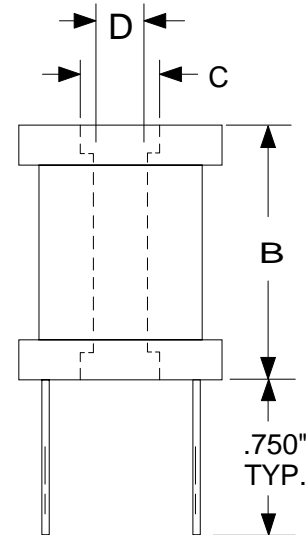
## Applications

Power Amplifiers  
Filters • Power Supplies  
SCR and Triac Controls  
Speaker Crossover Networks  
RFI Suppression

Part Number	L ± 20% ( $\mu$ H)	DCR Nom. (m $\Omega$ )	I Max. (A)	Lead Size AWG	Pkg. Code
L-12530	80	17	19.3	14	9
L-12531	100	27	16.0	15	9
L-12534	180	40	12.5	16	9
L-12536	300	78	10.0	17	9
L-12538	450	100	8.0	18	9
L-12540	700	150	6.4	19	9
L-12543	1300	260	5.0	20	9
L-12545	2000	350	4.5	20	9
<hr/>					
L-12254	100	22	12.0	14	10
L-12256	200	38	10.0	15	10
L-12257	300	56	8.5	16	10
L-12259	450	70	8.5	16	10
L-12262	700	130	5.5	18	10
L-12264	1000	166	5.5	18	10
L-12266	1500	250	4.3	20	10
L-12267	2000	340	3.4	20	10
<hr/>					
L-12560	150	16	20.5	12	11
L-12561	400	43	11.9	14	11
L-12563	500	61	10.6	15	11
L-12564	1000	109	7.6	16	11
L-12566	1500	141	6.2	16	11
L-12567	2000	181	5.8	17	11
L-12569	3000	300	4.5	18	11
L-12571	4700	470	3.5	19	11
L-12573	7000	680	3.0	20	11

## Pre-Tinned Leads

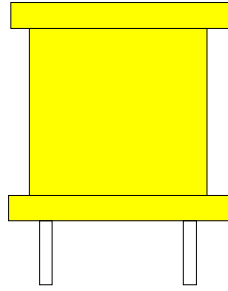
Center hole for mechanical mounting  
Coils finished with Polyolefin Shrink Tube  
Test Frequency 1 kHz



**Flammability:** Materials used in the production of these units are UL94-VO and meet requirements of IEC 695-2-2 needle flame test.

Pkg. Code	( Dimensions in inches )			
	A	B	C	D
9	1.100	1.010	0.237	0.175
10	1.390	1.010	0.315	0.190
11	1.390	1.380	0.315	0.190

# Power Line Chokes Drum Core Style



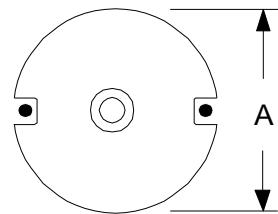
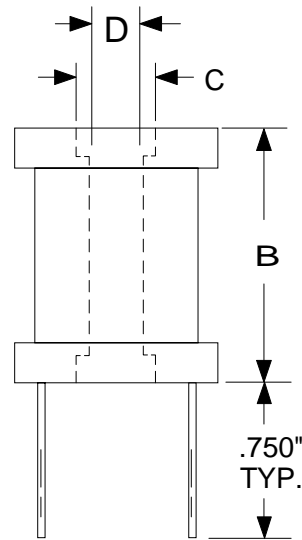
## Applications

Power Amplifiers  
Filters • Power Supplies  
SCR and Triac Controls  
Speaker Crossover Networks  
RFI Suppression

### Pre-Tinned Leads

Center hole for mechanical mounting  
Coils finished with Polyolefin Shrink Tube  
Test Frequency 1 kHz

Part Number	L ± 20% ( $\mu$ H)	DCR Nom. ( $m\Omega$ )	I Max. (A)	Lead Size AWG	Pkg. Code
L-12590	200	19	19.2	11	12
L-12591	300	25	17.8	12	12
L-12592	450	44	15.0	14	12
L-12593	700	59	11.7	14	12
L-12595	1000	97	9.4	15	12
L-12597	1700	148	7.6	16	12
L-12598	2000	170	6.8	16	12
L-12599	2600	220	6.0	17	12
L-12601	3800	340	5.0	18	12
L-12603	7900	650	3.4	19	12
L-12605	10000	920	3.0	20	12
L-12606	15000	960	2.9	20	12
<hr/>					
L-12630	200	15	28.8	10	13
L-12632	380	30	21.4	12	13
L-12634	750	53	15.6	13	13
L-12636	1000	79	13.2	14	13
L-12637	1600	134	10.5	15	13
L-12639	2500	200	7.8	16	13
L-12641	4000	320	6.5	17	13
L-12643	6500	500	5.2	18	13
L-12645	12000	900	3.8	19	13
L-12648	18000	1400	3.6	20	13



Flammability: Materials used in the production of these units are UL94-VO and meet requirements of IEC 695-2-2 needle flame test.

Pkg. Code	( Dimensions in inches )			
	A	B	C	D
12	1.770	1.380	0.360	0.270
13	2.200	1.380	0.380	0.290