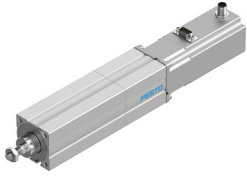


Electric actuator EPCO-40-200-5P-ST-E

Part number: 1472507

FESTO



Data sheet

Feature	Value
Size	40
Stroke	200 mm
Stroke reserve	0 mm
Piston rod thread	M10x1.25
Reversing backlash	100 µm
Step angle with full step	1.8 deg
Step angle tolerance	±5%
Screw diameter	12 mm
Spindle pitch	5 mm/U
Max. angle of rotation of the piston rod +/-	1 deg
Mounting position	Any
Piston rod end	External thread
Motor type	Stepper motor
Structural design	Electric actuator with ball screw drive
Spindle type	Ball screw drive
Protection against torsion/guide	With plain-bearing guide
Rotor position sensor	Incremental encoder
Rotor position sensor interface	RS422 TTL A/B channels + zero index
Rotor position sensor measuring principle	Optical
Max. acceleration	10 m/s ²
Max. speed	0.18 m/s
Repetition accuracy	±0.02 mm
Duty cycle	100%
Insulation protection class	B
Nominal operating voltage DC	24 V
Motor nominal current	4.2 A
Certification	RCM compliance mark c UL us - Recognized (OL)
CE marking (see declaration of conformity)	As per EU EMC directive
Corrosion resistance class (CRC)	1 - Low corrosion stress
Storage temperature	-20 °C ... 60 °C
Relative air humidity	0 - 85 % Non-condensing
Degree of protection	IP40
Ambient temperature	0 °C ... 50 °C

Feature	Value
Impact energy in the end positions	4.0E-4 J
Max. torque Mx	0 Nm
Max. torque My	3.3 Nm
Max. torque Mz	3.3 Nm
Max. feed force Fx	650 N
Guide value for payload, horizontal	120 kg
Guide value for payload, vertical	60 kg
Mass moment of inertia JH per meter of stroke	0.1166 kgcm ²
Mass moment of inertia JL per kg of payload	0.0064 kgcm ²
Mass moment of inertia JO	0.3325 kgcm ²
Moving mass at 0 mm stroke	415 g
Additional weight per 10 mm stroke	55 g
Basic weight with 0 mm stroke	2585 g
Additional moving mass per 10 mm stroke	4.9 g
Electrical connection technology	Plug
Type of mounting	With internal thread With accessories
Note on materials	Contains paint-wetting impairment substances RoHS-compliant
Cover material	Wrought aluminum alloy Smooth anodized
Housing material	Wrought aluminum alloy Smooth anodized
Piston rod material	High-alloy stainless steel
Spindle nut material	Steel
Spindle material	Roller bearing steel
Material of cylinder barrel	Wrought aluminum alloy Smooth anodized