

**PLEASE CHECK WWW.MOLEX.COM FOR LATEST PART INFORMATION**

**Part Number:** [0563773000](#)  
**Status:** **Active**  
**Description:** CRC™ Shielded Rectangular I/O Receptacle Shell, Panel Mount, Signal, 30 Circuits, Front Mount Type

**Documents:**

[Drawing \(PDF\)](#) [Product Specification PS-51238-018 \(PDF\)](#)  
[Product Specification PS-51238-010 \(PDF\)](#) [RoHS Certificate of Compliance \(PDF\)](#)

**General**

Product Family	I/O Connectors
Series	<a href="#">56377</a>
Application	Panel-Mount, Wire-to-Wire
Component Type	Panel Mount Shell
Product Name	CRC™
Type	N/A

**Physical**

Boot Color	N/A
Circuits (Loaded)	N/A
Circuits (maximum)	30
Durability (mating cycles max)	100
Gender	Receptacle
Keying to Mating Part	Yes
Lock to Mating Part	Yes
Material - Plating Mating	n/a
Orientation	Vertical
Packaging Type	Tray
Panel Mount	Front
Pitch - Mating Interface (in)	0.000 In
Pitch - Mating Interface (mm)	0.00 mm
Polarized to Mating Part	Yes
Polarized to PCB	N/A
Surface Mount Compatible (SMC)	N/A
Temperature Range - Operating	-40°C to +105°C
Termination Interface: Style	N/A
Waterproof / Dustproof	No

**Electrical**

Current - Maximum per Contact	3A
Shield Type	Full Shield
Shielded	Yes
Voltage - Maximum	250V AC (RMS)/DC

**Material Info**

**Reference - Drawing Numbers**

Product Specification	PS-51238-010, PS-51238-018, RPS-51238-001
Sales Drawing	SD-56377-006



**EU RoHS**  
**ELV and RoHS**  
**Compliant**  
**REACH SVHC**  
 Not Reviewed  
**Halogen-Free**  
**Status**  
 Not Reviewed

**China RoHS**



**Need more information on product environmental compliance?**

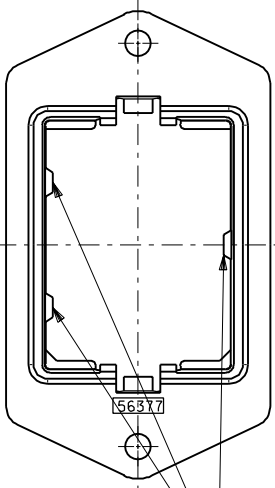
Email [productcompliance@molex.com](mailto:productcompliance@molex.com)  
 For a multiple part number RoHS Certificate of Compliance, [click here](#)

Please visit the [Contact Us](#) section for any non-product compliance questions.

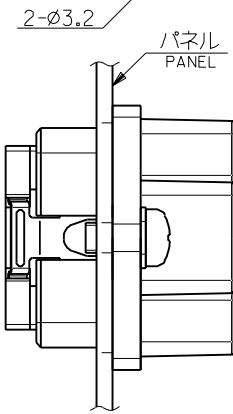
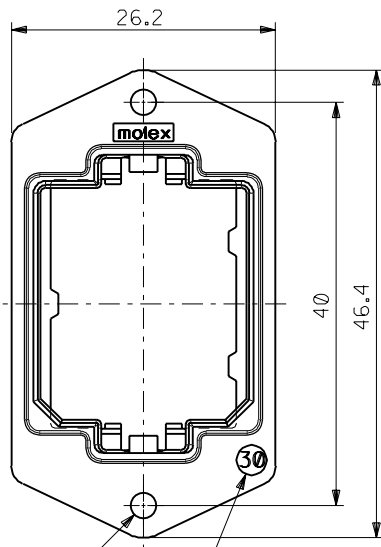
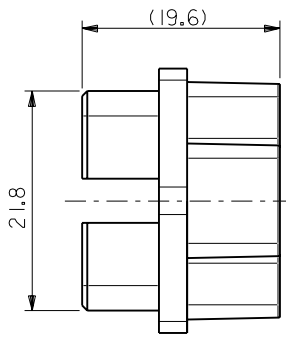
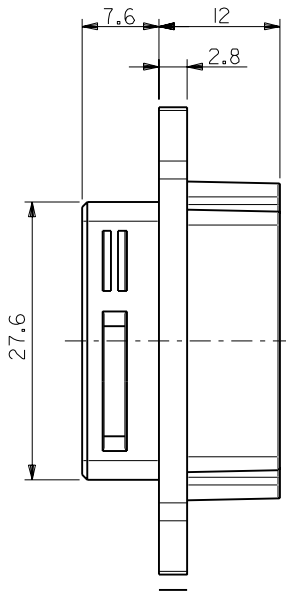
**Search Parts in this Series**  
[56377Series](#)

**Use With**  
[51233-301\\*](#)|[51238-301\\*](#)

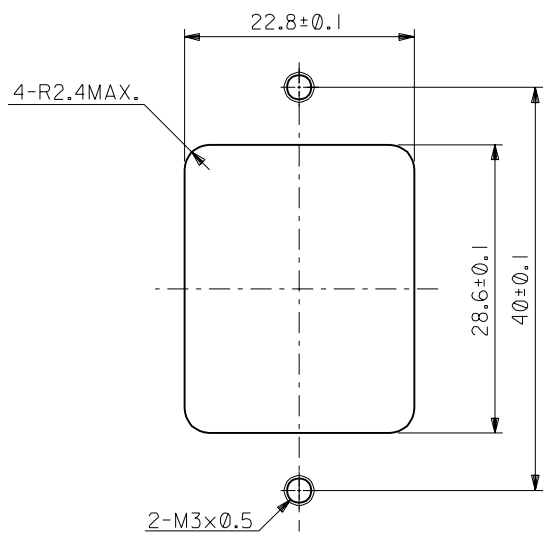
DWG. NO.  
SD-56377-006



ハウジング挿入方向キー  
POLARIZATIONS KEY FOR HOUSING



パネル前面取り付け  
FRONT MOUNT TYPE



推奨パネル切り取り寸法 (前面取り付け)  
RECOMMENDED PANEL OPENING (FRONT MOUNTING)

注記  
NOTES

- 材質  
MATERIAL  
亜鉛合金、ニッケルメッキ  
ZINC ALLOY, NI PLATING
- 適用ハウジングアッセンブリ : 51233-301\* (PIN HS'G ASS'Y)  
51238-301\* (SOCKET HS'G ASS'Y)  
APPLICABLE HOUSING ASS'Y : 51233-301\* (PIN HS'G ASS'Y)  
51238-301\* (SOCKET HS'G ASS'Y)
- 推奨ねじ締め付けトルク : 5~6 kgf・cm  
RECOMMENDED SCREW TIGHTENING TORQUE : 5~6 kgf・cm

56377-3000 56377-\*\*\*\*

MATERIAL.NO MODEL.NO

DIMENSIONS:  mm  INCH  mm ONLY SHT REV  
REVISION ON CAD ONLY

TITLE: COMPACT ROBOT CONN. (CRC) RECEPTACLE SHELL

**molex** MOLEX INCORPORATED

MATERIAL NO. SEE CHART DRAWING NO. SD-56377-006 SHEET NO. 1 OF 1

THIS DRAWING CONTAINS INFORMATION THAT IS PROPRIETARY TO MOLEX INCORPORATED AND SHOULD NOT BE USED WITHOUT WRITTEN PERMISSION. SIZE B

DO NOT SCALE DRAWING

EC NO. DRWN: CHK: APPR:	EC NO. DRWN: CHK: APPR:	EC NO. DRWN: CHK: APPR:	REVISED 01/10/17 EC NO. J2002-0932 DRWN: S.AKIYAMA CHK: J.MIYAZAWA APPR: Y.O.IITO	RELEASED 01/02/09 EC NO. JD2001-1040 DRWN: S.AKIYAMA CHK: J.MIYAZAWA APPR: H.IKESUGI	DESCRIPTION	MATERIAL 材料	GENERAL TOLERANCES: (UNLESS SPECIFIED) 一般公差	SCALE 2-1	DESIGN UNITS <input checked="" type="checkbox"/> mm <input type="checkbox"/> INCH	THIRD ANGLE PROJECTION
					注記参照 SEE NOTES		10 UNDER 未満	±0.2	DRAWN BY & DATE <i>S. Akiyama</i> / 01/25	TITLE:
						FINISH 仕上げ	10 OVER 以上	±0.25	CHECKED BY & DATE <i>J. Miyazawa / Y. Ito</i>	
						WIRE RANGE 適用線径範囲	30 UNDER 未満	±0.3	APPROVED BY & DATE <i>(Signature)</i>	
						INS. RANGE 被覆外径	30 OVER 以上	±3°	CAD FILE NAME 56377006.S01	