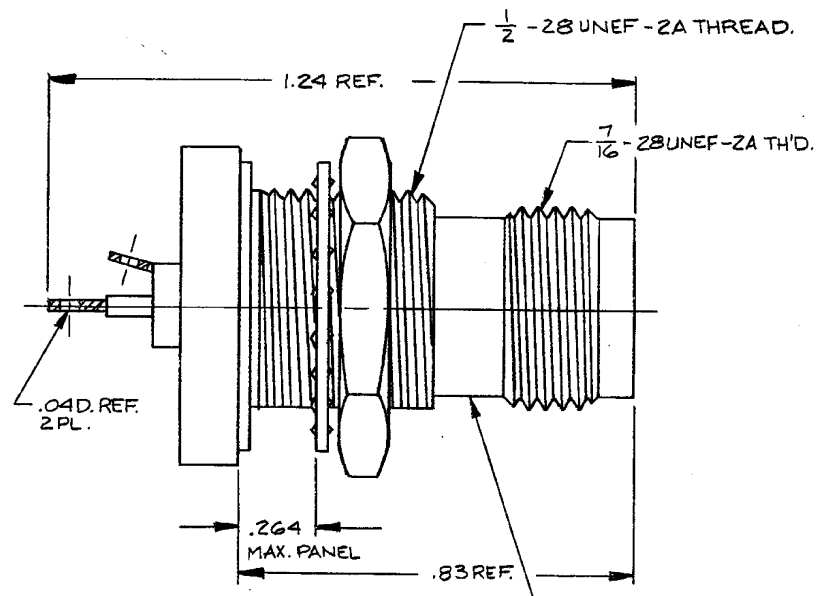


DASH NO. M CODE MADE FROM

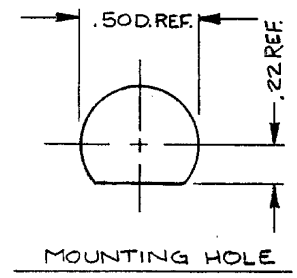
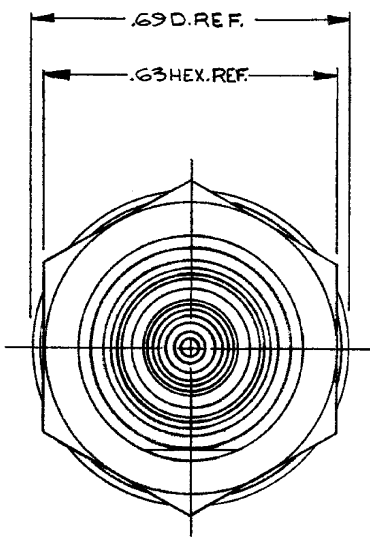


STAMP: 91836 M49142/10-0002  
1944-8-5

NOTES:

1. MATERIALS:
  - GLASS SEAL: CENTER CONTACT } NICKEL & IRON COMPOSITION.
  - MIDDLE BAND } NICKEL & IRON COMPOSITION.
  - OUTER BAND: LEAD FREE LOW CARBON STEEL.
  - GLASS: GLASS PREFORM OF THE SODA LEAD FAMILY.
  - GASKET: SILICONE RUBBER PER ZZ-R-765.
  - LOCKWASHER: PHOS. BRONZE, QQ-B-750.
  - TRB CONTACT F: BER. COP. QQ-C-530.
  - INSULATORS: TEFLON, L-P-403.
  - ALL OTHER PARTS: BRASS, QQ-B-626.
2. FINISHES: GLASS SEAL TERMINALS: } GOLD PLT. PER MIL-G-45204.
- TRB CONTACT F: } GOLD PLT. PER MIL-G-45204.
- ALL OTHER METAL PARTS: SILVER PLT. PER. QQ-S-365.
3. ELECTRICAL CHARACTERISTICS:
  - WORKING VOLTAGE: 400 VRMS.

- UNLESS OTHERWISE SPECIFIED:
- |   |   |
|---|---|
| <ol style="list-style-type: none"> <li>1. TOLERANCES: FRACTIONS &amp; 2 PLACE DECIMALS ± .010</li> <li>3 PLACE DECIMALS ± .004</li> <li>T. I. R. CONCENTRICITY OF ANY 2 DIAMETERS MAY NOT EXCEED HALF THE SUM OF THEIR TOLERANCES.</li> </ol> | <ol style="list-style-type: none"> <li>2. REMOVE ALL BURRS, BREAK SHARP EDGES .005 MAX.</li> <li>3. NO FILLETS PERMITTED.</li> <li>4. SURFACE ROUGHNESS 63 MICROINCHES RMS MAX.</li> <li>5. ALL DIMENSIONS PRIOR TO PLATING.</li> <li>6. ALL PLATING IN ACCORDANCE WITH KER 10004.</li> </ol> |
|---|---|



GSD

M49142/10-0002

REVISIONS	
ISSUE	CHANGES
0	ER 30045 RESTRICTED USAGE JCA 19 AUG 88
1	CN 30726 E JCA 13 APR 89

GSD

SCALE 4:1	
APPROX. SURFACE AREA	
1944-8-5	
USED ON	
REF.	
TRT HERMETIC BULKHEAD RECEPTACLE	
DRAWN JCA	DATE 19 AUG 88
APPR. <i>[Signature]</i>	DATE 8-21-88
APPR.	DATE

KINGS

ELECTRONICS CO., INC.  
ROCKAWAY, NEW YORK 10767

GSD

M49142/10-0002