

Customer Information Sheet

DRAWING No.: S1721-XX

SHEET 2 OF 2

IF IN DOUBT - ASK

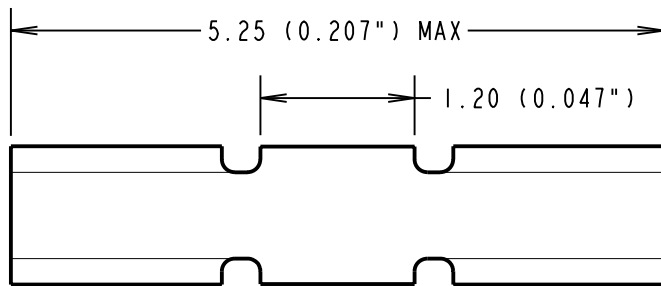
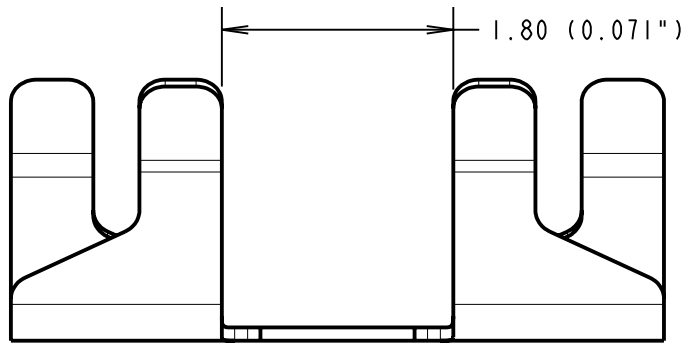
©

NOT TO SCALE

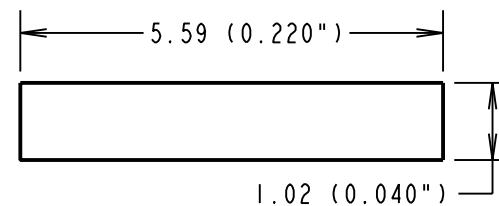
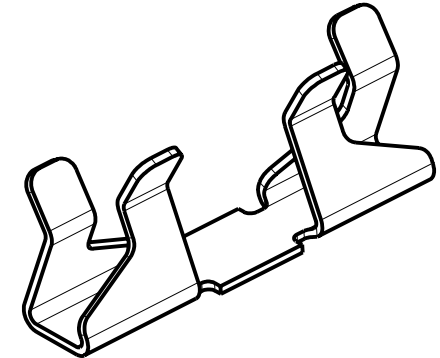
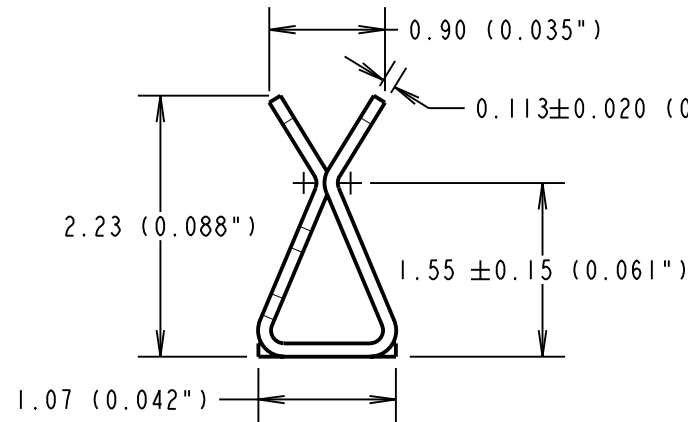
THIRD ANGLE PROJECTION

ALL DIMENSIONS IN mm

INCHES CONVERSION IN ()



PART No.	FINISH:
S1721-06	90/10 TIN/LEAD
S1721-46	100% TIN



RECOMMENDED PAD LAYOUT

COMPONENT SPECIFICATION:
 MATERIAL = BERYLLIUM COPPER
 FINISH = '06' = 3μ 90/10 TIN/LEAD
 '46' = 3μ 100% TIN,
 OVER 2.0μ NICKEL
 SHIELD THICKNESS = 0.13-0.23mm

PERFORMANCE SPECIFICATION:
 ENGAGEMENT FORCE = 5N MAX.
 DISENGAGEMENT FORCE = 0.35N MIN.
 DURABILITY = 15 ACTUATIONS MIN.
 CONTACT RESISTANCE = 40mΩ MAX.

RA	4	05.07.10	10860
NAME	ISS.	DATE	C/NOTE
APPROVED:		R. ADDE	
CHECKED:		M.G. PLESTED	
DRAWN:		J. ENRIGHT	
CUSTOMER REF.:			
ASSEMBLY DRG:			

NOTES:

- FOR TAPE AND REELED VERSION, SEE DRAWING S1721-06R.
- PACKING: - 100 COMPONENTS PER BAG
 NB: COMPONENTS SUPPLIED IN TAPE POCKETS TO AVOID DAMAGE DURING STORAGE AND TRANSIT.

HARWIN

HARWIN USA
 TEL: 603 893 5376
 FAX: 603 893 5396
 mis@harwin.com

HARWIN Europe (UK)
 TEL: 023 9231 4545
 FAX: 023 9231 4590
 mis@harwin.co.uk

HARWIN Asia
 TEL: +65 6 779 4909
 FAX: +65 6 779 3868
 mis@harwin.com.sg

THIS DRAWING AND ANY INFORMATION OR DESCRIPTIVE MATTER SET OUT HEREON ARE CONFIDENTIAL AND COPYRIGHT PROPERTY OF THE HARWIN GROUP AND MUST NOT BE DISCLOSED, LOANED, COPIED OR USED FOR MANUFACTURING, TENDERING OR FOR ANY OTHER PURPOSE WITHOUT THEIR WRITTEN PERMISSION.

TOLERANCES
 X. = ±1mm
 X.X = ±0.25mm
 X.XX = ±0.10mm
 X.XXX = ±0.01mm
 ANGLES = ±5°
 UNLESS STATED

MATERIAL:
 SEE ABOVE
 FINISH: SEE ABOVE
 S/AREA: mm²

TITLE:
 MINI SMT RFI SHIELD CLIP
 (LOOSE)

DRAWING NUMBER:
 S1721-XX

SHT
 2 OF 2