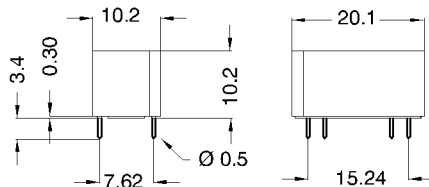
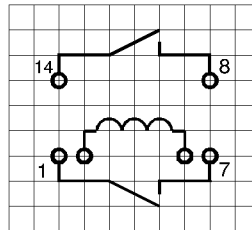


**DIMENSIONS (mm)**


Pins: Ø0.5 mm  
 L = 3.4±0.3 mm  
 Material: Cu-alloy tinned


**LAYOUT (21L)**

pitch 2.54 mm/Top view


**MARKING**


MEDER-Label  
 Type  
 Production code,  
 EN60062/Factory code

Coil Data at 20 °C	Conditions	Min	Typ	Max	Unit
Coil resistance		1.215	1.350	1.485	Ohm
Coil voltage			24		VDC
Rated power			427		mW
Pull-In voltage				16,8	VDC
Drop-Out voltage		3,6			VDC

Contact data 31	Conditions	Min	Typ	Max	Unit
Contact-form				A	
Contact-material	independent on position			Hg	
Switching suitability				bounce free	
Contact rating	Any DC combination of V & A up to 500V max. 50W, with 1000V max. 5W			50	W
Switching voltage	DC or Peak AC			500	V
Switching current	DC or Peak AC			2	A
Carry current	DC or Peak AC			3	A
Contact resistance static	Measured with 40% overdrive Start Value			80	mOhm
Contact resistance dynamic	Maximum value 1,5 ms after excitation Start Value			130	mOhm
Insulation resistance	RH <45 %, 100 V test voltage	100			GOhm
Breakdown voltage	according to IEC 255-5	2.000			VDC
Operate time incl. bounce	measured with 40% overdrive			1,2	ms
Release Time	measured with no coil excitation			1	ms
Capacity	@ 10 kHz across open switch		0,3		pF

Special Product Data	Conditions	Min	Typ	Max	Unit
Insulation resistance Coil/Contact	RH <45%, 200 VDC test voltage	10			GOhm
Insulation voltage Coil/Contact	according to IEC 255-5	1,5			kV DC
Housing material				PBT glass fibre reinforced	
Sealing compound				Polyurethan	
number of contacts					

Environmental data	Conditions	Min	Typ	Max	Unit
Ambient temperature		-20		55	°C
Storage temperature		-25		85	°C
Soldering temperature	wave soldering max. 5 sec			260	°C
Cleaning				fully sealed	