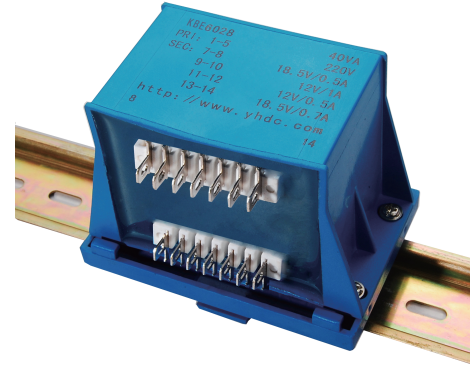


Model:KBE6028

Features:

vacuum epoxy potting, safe moisture, terminals, lead, Three kinds of welding output, C35 standard rail or plate type two Installation, AC output.



Technical indicators:

Installation: card / plate

Flammability: UL94-V0

Working temperature: -25°C ~ +55°C

Frequency range: 50Hz ~ 60Hz

Dielectric strength: 3.75KV 50Hz 1min

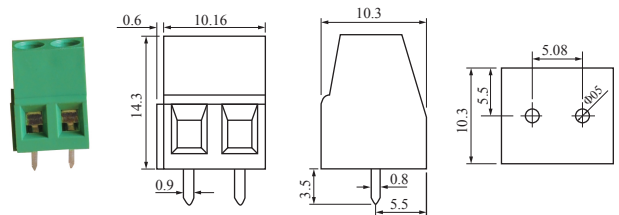
Electrical parameters:

Primary operating voltage	110/220/230	V
Primary voltage range	±10	%
Adjustment rate	≤15	%
rated power	40	VA
Temperature rise	≤35	°C
Load loss	≤1.5	W
weight	700	g

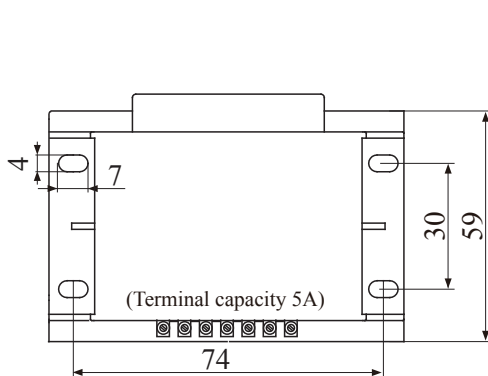
Secondary voltage		Secondary no load voltage		Secondary full load current	
Single	Double	Single	Double	Single	Double
6V	6V×2	7.4V	7.4V×2	6.6A	3.3A×2
7.5V	7.5V×2	9.3V	9.3V×2	5.33A	2.67A×2
9V	9V×2	11.1V	11.1V×2	4.44A	2.22A×2
12V	12V×2	14.8V	14.8V×2	3.33A	1.67A×2
15V	15V×2	18.5V	18.5V×2	2.66A	1.33A×2
18V	18V×2	22.2V	22.2V×2	2.22A	1.11A×2
24V	24V×2	29.6V	29.6V×2	1.66A	0.83A×2

Dimension drawing (in mm):

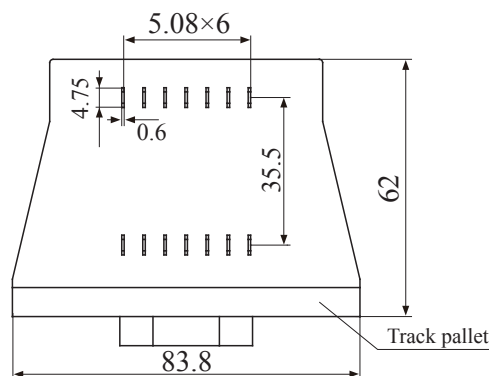
Connector Illustration:



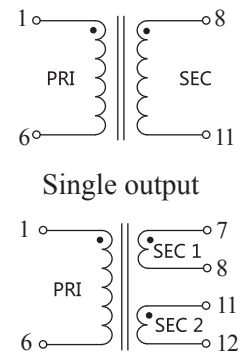
PCB direct welding crimp terminal, spacing 5.08



Top View



Back view(P type welding piece output)



Single output

Dual output

Schematic Diagram