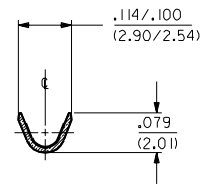
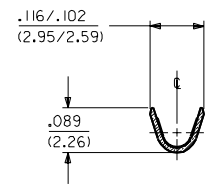
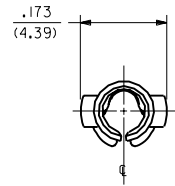
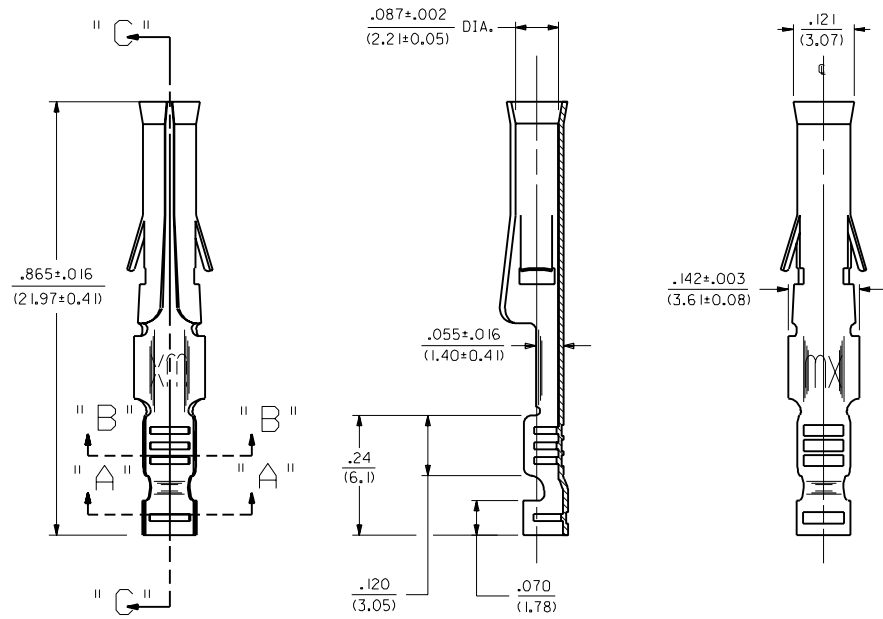


PART NO.	ENG. NO.
02-09-1138	2871-A(P90 I)
02-09-1139	2871-A(P90 I)L
-	-
-	-
-	-



SECTION "A-A" SECTION "B-B"



SECTION "C-C"

LEGEND

2871-A(****)*
 P=PREPLATE BLANK=POSTPLATE
 FINISH CODE
 FORM BLANK=STD. CHAIN L=LOOSE

- NOTES:
1. TERMINAL FOR USE WITH .093/(2.36) SERIES HOUSINGS AND WILL ACCEPT 22 - 24 AWG WIRE.
 2. INSERTION FORCE: 3.5 LBS. MAX. WHEN TERMINAL IS INSERTED INTO AN .093 SERIES HOUSING.
 3. CONTACT RETENTION: 20 LBS. MIN. FROM HOUSING.
 4. THIS PART CONFORMS TO PRODUCT SPEC. 02-09.

FINISH CODES:
 901 HOT TIN DIP .000020/(0.0005 I) MIN.

MATERIAL:
 CARTRIDGE BRASS, ALLOY #C26000,
 .010/(0.25) THICK, SPRING TEMPER



B	REVISE PER ECR US 0799 GC 2/14/95	RW
A	FINAL RELEASE ECR US 0857 GC 6/11/92	RW

DIMENSIONS SHOWN METRIC (INCH)		▽ = 0	▽ = 0	REVISE ONLY ON CAD SYSTEM	
UNLESS OTHERWISE SPECIFIED TOLERANCES: ANGULAR ± 1/2°		TITLE			
		CRIMP TERM., FEMALE			
		.093/(2.36) DIA.			
		FOR 22 - 24 AWG WIRE			
3 PLACE ± .010 ---		SHEET NO.		DATE	
2 PLACE ± .014 ± 0.25		1151.E.J.L.L.		6/11/92	
1 PLACE --- ± 0.36		MOLEX INCORPORATED		U.S.A.	
DRAFT WHERE APPLICABLE MUST REMAIN WITHIN DIMENSIONS		PART NO.		DRWG. NO.	
		SD2871X1		SD-2871-*	
DRAWN BY: GWF		CHKD. BY: RW		FILE NAME	
APP'D. BY: GWF		SCALE: 6 : 1		SD2871X1.DWG	
				THIS DRAWING CONTAINS INFORMATION THAT IS PROPRIETARY TO MOLEX INC. AND SHOULD NOT BE USED WITHOUT WRITTEN PERMISSION.	
				DIV. CP	
				SIZE C	