

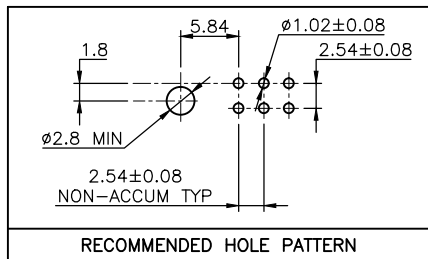
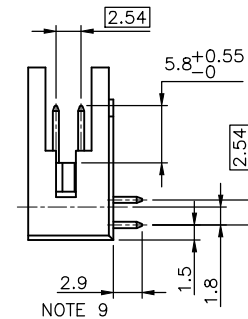
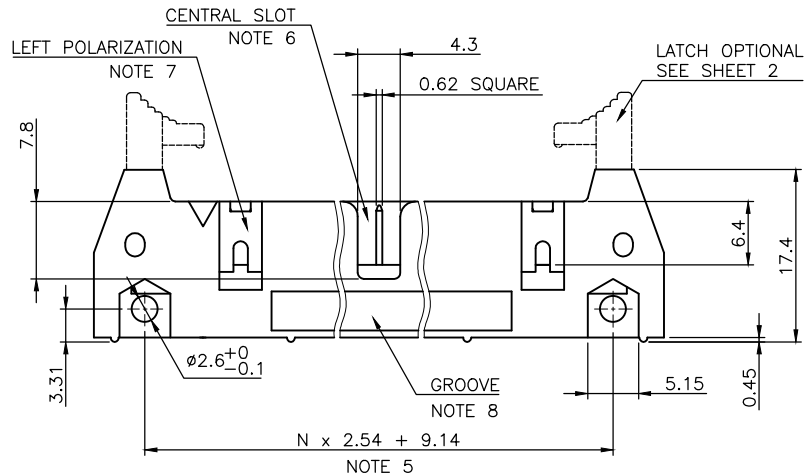
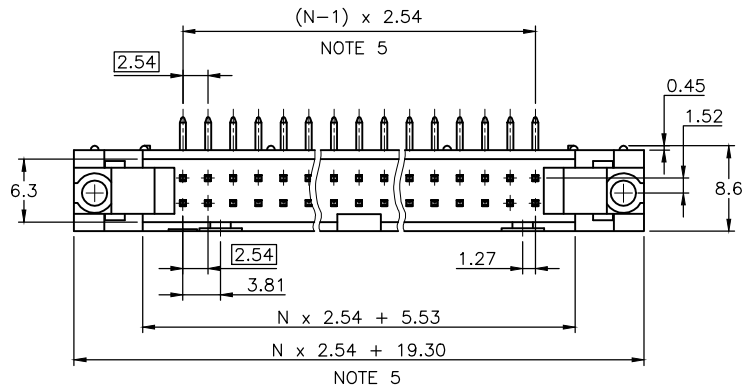
**PRODUCT NUMBER**

**71922-YXXZLF**

- WHEN REQUIRED, ADD SUFFIX LETTER "LF" INDICATES THE PRODUCT IS RoHS COMPATIBLE, SEE NOTE 10
- S= SPECIFIC CUSTOMER PLATING OPTION
- TOTAL NB OF POSITIONS, SEE SHEET 2
- LATCHING  
0= WITHOUT LATCH  
1= STANDARD LATCH  
2= LOW PROFILE LATCH

**NOTES:**

- 1 - HOUSING MAT'L : GLASS FILLED THERMOPLASTIC. UL94V-0 COLOR: GREY
- 2 - PIN MATERIAL : PHOSPHOR BRONZE
- 3 - PRODUCT PACKAGED IN TUBES
- 4 - 40N MIN LATCH RETENTION FORCE AT FIRST EXTRACTION
- 5 - TO DETERMINE DIMENSIONS :  
N = NUMBER OF POSITIONS PER ROW  
EXAMPLE : 8 POS N x 2.54 = 20.32mm
- 6 - NO CENTRAL SLOT ON POSITIONS 6 & 8
- 7 - NO LEFT POLARIZATION ON POSITIONS 06, 08, 10, 14.
- 8 - NO GROOVE ON POSITIONS 06, 08, 10, 14, 30, 34
- 9 - 4.5mm SOLDER TAIL  
ORDER 71922-4XX (WITH STANDARD LATCH ONLY)  
ORDER 71922-5XX (WITH LOW PROFILE LATCH ONLY)
- 10 - RoHS COMPATIBLE PRODUCT SPECIFICATIONS
  - a - PLATING:
    - "LF" MEANS THE PRODUCT IS LEAD-FREE, 2µm MINIMUM MATTE TIN OVER 1.27µm MINIMUM NICKEL UNDERPLATE.
  - b - MANUFACTURING PROCESS COMPATIBILITY
    - THE HOUSING WILL WITHSTAND EXPOSURE TO 260°C ±5°C SOLDER BATH TEMPERATURE FOR 5 SECONDS IN A WAVE SOLDER APPLICATION WITH A 1.6mm MIN THICK CIRCUIT BOARD.
  - c - LABELING:
    - MEETS PACKAGING SPECS AS PER GS-14-920
  - d - LEGAL STATEMENT: SEE GS-22-008.



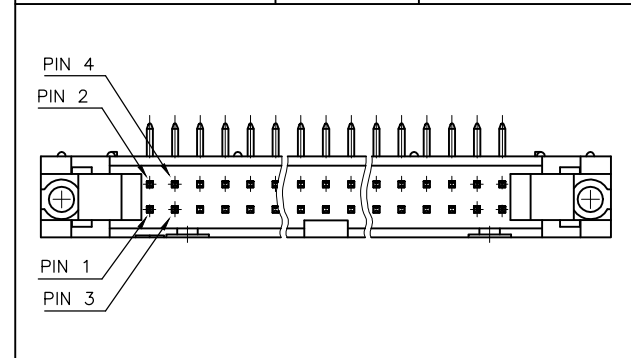
mat'l. code SEE NOTES		surface ISO 1302 ✓		tolerance ISO 406 ISO 1101		projection mm		product family QUICKIE	
ltr ecn no dr date		tolerances unless otherwise specified		.XX ±0.3		mm		title SHR.EL.HEADER RA DR TMT	
W B-16776 LMU 14.01.23		angles linear		.XX ±0.13		scale 2:1		dwg no 71922	
X B-18018 JCO 14.06.19				.XXX ±0.05		FCJ		sheet 1 of 2 size A3	
S F06-0229 LMU 06.07.17		dr D.LE		01.01.24				type CUSTOMER Drawing	
T F07-0195 LMU 07.05.25		engr JM.C		01.01.24					
U F08-0146 YOY 08.04.11		appd JM.C		01.01.24					
sheet revision X R									
index sheet 1 2									

FCJ  
 FCconnect.com  
 Copyright FCJ

CORE RANGE	
LATCHING	NUMBER OF POSITIONS
1	06
1	08
1	10
1	14
1	16
1	18
1	20
1	26
1	30
1	34
1	40
1	44
1	50
1	60
1	64

CATALOGUE RANGE	
LATCHING	NUMBER OF POSITIONS
0/2	06
0/2	08
0/2	10
0/2	14
0/2	16
0/2	18
0/2	20
0/2	26
0/2	30
0/2	34
0/2	40
0/2	44
0/2	50
0/2	60
0/2	64

APPLICATION SPECIFIC		
PRODUCT NUMBER	SIZE	MISSING PIN
71922-139	2x20	PIN 20
71922-128	2x13	PIN 5 to 12
71922-135	2x17	PIN 2 & 3



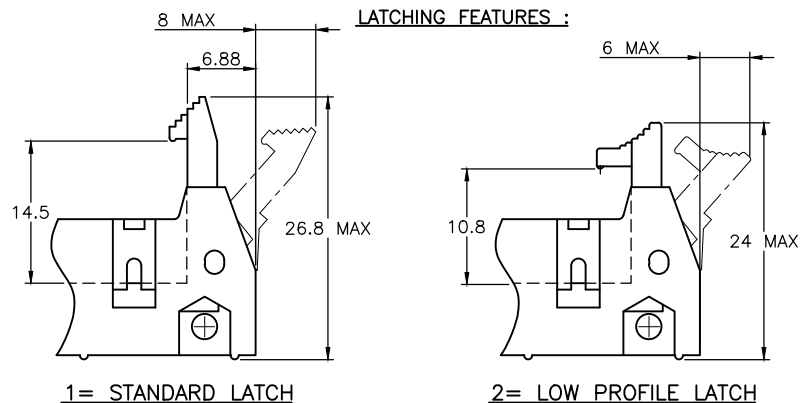
**PLATING :**

- 0.76µm GOLD/GXT (PdNi WITH GOLD FLASH) ON CONTACT AREA
- 3.81µm TIN-LEAD ON TAIL
- UNDERPLATE : 1.27µm Ni MIN
- WHEN SUFFIX LETTER "LF" IS REQUIRED, 2µm MIN MATTE TIN OVER 1.27µm MIN NICKEL IS PROVIDED INSTEAD OF TIN-LEAD

**PLATING :**

- 0.76µm GOLD/GXT (PdNi WITH GOLD FLASH) ON CONTACT AREA
- 3.81µm TIN-LEAD ON TAIL
- UNDERPLATE : 1.27µm Ni MIN
- WHEN SUFFIX LETTER "LF" IS REQUIRED, 2µm MIN MATTE TIN OVER 1.27µm MIN NICKEL IS PROVIDED INSTEAD OF TIN-LEAD

**LATCHING FEATURES :**



mat'l. code	surface	tolerance	projection	product family
	ISO 1302	ISO 406 ISO 1101		QUICKIE
ltr	ecn no	dr	date	title
M	F06-0229	LMU	06.07.17	SHR.EL.HEADER
N	F07-0195	LMU	07.05.25	
P	F08-0146	YOV	08.04.11	RA DR TMT
R	B-16776	LMU	14.01.23	scale 2:1
K	F04-0325	JCO	04.08.16	71922
L	F04-0389	JCO	04.12.21	
sheet index	revision sheet			dwg no
				71922
				sheet 2 of - size
				A3
				type
				CUSTOMER Drawing



Copyright FCI