

SMD Type Power Inductor

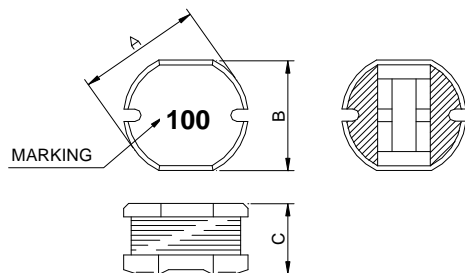
FPI0705BM-SERIES

1. Features

1. Excellent solderability and high heat resistance.
2. Excellent terminal strength construction.
3. Packed in embossed carrier tape and can be used by automatic mounting machine.
4. 100% Lead(Pb) & Halogen-Free and RoHS compliant.

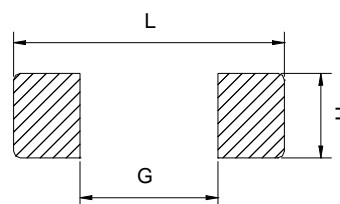


2. Dimension



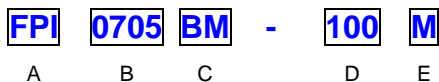
Size	A(mm)	B(mm)	C(mm)
FPI 0705	7.80±0.3	7.00±0.3	5.00±0.3

Recommended Land pattern



L(mm)	G(mm)	H(mm)
8.0	2.0	7.5

3. Part Numbering



- A: Series
- B: Dimension
- C: Lead free type Black marking
- D: Inductance 100=10uH
- E: Inductance Tolerance K=±10%, M=±20%

4. Specification

TAI-TECH Part Number	Inductance (μ H)	Tolerance (%)	Test Frequency (Hz)	DCR (Ω) max.	IDC (A) max.
FPI 0705BM-3R3M	3.30	$\pm 20\%$	1V/7.96M	0.03	4.60
FPI 0705BM-4R7M	4.70	$\pm 20\%$	1V/7.96M	0.04	4.20
FPI 0705BM-100M	10.0	$\pm 20\%$	1V/2.52M	0.07	2.30
FPI 0705BM-120M	12.0	$\pm 20\%$	1V/2.52M	0.08	2.00
FPI 0705BM-150M	15.0	$\pm 20\%$	1V/2.52M	0.09	1.80
FPI 0705BM-180M	18.0	$\pm 20\%$	1V/2.52M	0.10	1.60
FPI 0705BM-220M	22.0	$\pm 20\%$	1V/2.52M	0.11	1.50
FPI 0705BM-270M	27.0	$\pm 20\%$	1V/2.52M	0.12	1.30
FPI 0705BM-330M	33.0	$\pm 20\%$	1V/2.52M	0.13	1.20
FPI 0705BM-390M	39.0	$\pm 20\%$	1V/2.52M	0.16	1.10
FPI 0705BM-470K	47.0	$\pm 10\%$	1V/2.52M	0.18	1.10
FPI 0705BM-560K	56.0	$\pm 10\%$	1V/2.52M	0.24	0.94
FPI 0705BM-680K	68.0	$\pm 10\%$	1V/2.52M	0.28	0.85
FPI 0705BM-820K	82.0	$\pm 10\%$	1V/2.52M	0.37	0.78
FPI 0705BM-101K	100	$\pm 10\%$	1V/1K	0.43	0.72
FPI 0705BM-121K	120	$\pm 10\%$	1V/1K	0.47	0.66
FPI 0705BM-151K	150	$\pm 10\%$	1V/1K	0.64	0.58
FPI 0705BM-181K	180	$\pm 10\%$	1V/1K	0.71	0.51
FPI 0705BM-221K	220	$\pm 10\%$	1V/1K	0.96	0.49
FPI 0705BM-271K	270	$\pm 10\%$	1V/1K	1.11	0.42
FPI 0705BM-331K	330	$\pm 10\%$	1V/1K	1.26	0.40
FPI 0705BM-391K	390	$\pm 10\%$	1V/1K	1.77	0.36
FPI 0705BM-471K	470	$\pm 10\%$	1V/1K	1.96	0.34

Note:

Based on inductance change ($\Delta L/L0 : \leq -35\%$) @ ambient temp. 25°C

Based on temperature rise ($\Delta T : 40^\circ\text{C}$ typ.)