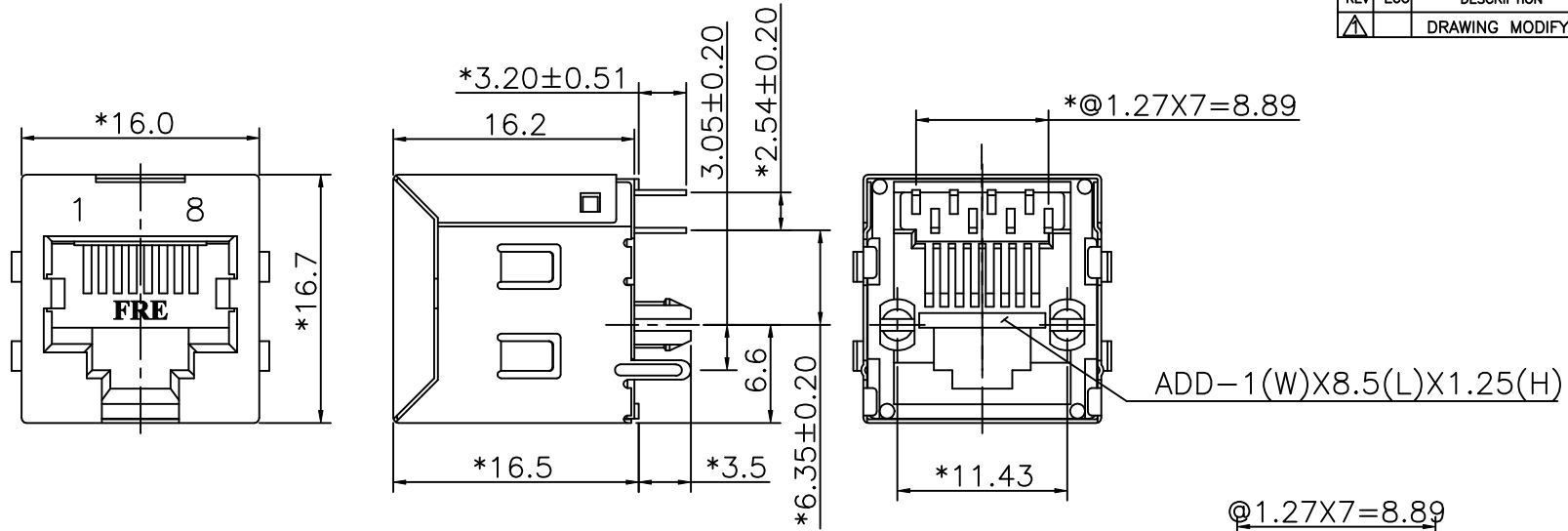


REVISION RECORD				
REV	ECO	DESCRIPTION	DRFT	CHKD
▲		DRAWING MODIFY	JAMIN 12/13/05	



NOTES:

ELECTRICAL:

1. VOLTAGE RATING : 125 VAC RMS.
2. CURRENT RATING : 1.5 AMP.
3. CONTACT RESISTANCE : 30 MILLIOHMS MAX.
4. INSULATION RESISTANCE: 1000 MEGOHMS MIN @ 500 VDC.
5. DIELECTRIC STRENGTH : 1000 VAC RMS 60Hz, 1MIN.

MECHANICAL:

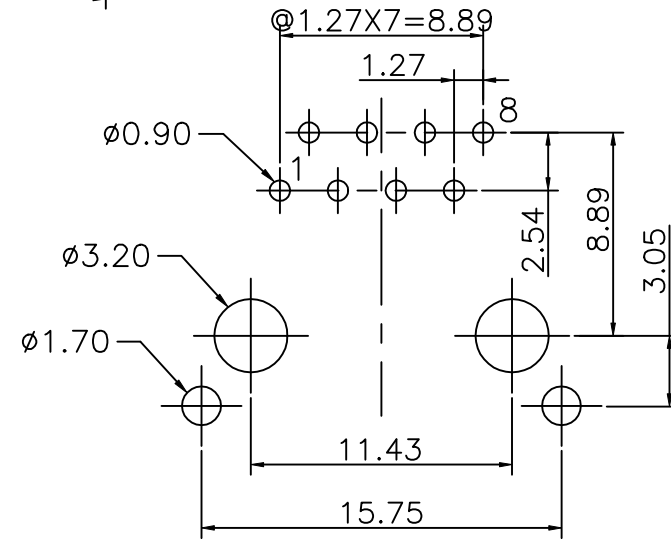
- ▲ 1. HOUSING MATERIAL : PBT UL94V-0.
2. CONTACT MATERIAL : PHOSPHOR BRONZE t=0.35mm.
3. PLATING : GOLD PLATING OVER NICKEL.
4. OPERATING LIFE : 750 CYCLES MIN.
5. PCB RETENTION PRE-SOLDER : 1 LB MIN.
6. PCB RETENTION POST-SOLDER: 10 LBS MIN.

ENVIRONMENTAL:

1. STORAGE : -40°C TO +85°C.
 - ▲ 2. OPERATION: 0°C TO 70°C.
 - ▲ 3. WAVE SOLDER TEMPERATURE: 230~250°C (5~10SECONDS).
- MATES WITH MODULAR PLUG CONFORMING TO
FCC PART 68, SUBPART F.
CUL FILE NO. E163191

▲ ROHS PART NUMBER: E5288-3X0X4X-L

- | | |
|---------------------------------|-------------------------|
| SHIELD PLATING: | GOLD PLATING: |
| 1- TIN PLATING,W/ SIDE TABS | 1- 3u" 2- 6u" |
| 2- NICKEL PLATING,W/ SIDE TABS | 3- 15u" 4- 30u" |
| S- TIN PLATING,W/O SIDE TABS | 5- 50u" |
| T- NICKEL PLATING,W/O SIDE TABS | 0-PBT+15%G.F (BK) |
| | 1-PBT+30%G.F (BK) |
| | L-PBT+30%G.F (YELLOW) ▲ |



PC Board Layout Component Side Shown

DETACHED LISTS	← MM (INCH) →	DFTO SAMMY	DATE 03/16/05	FULL RISE ELECTRONIC CO., LTD		
	TOLERANCES EXCEPT AS NOTED	CHKDANKUE	DATE 2005/12/14			
	MM	MFO	DATE	TITLE RJ45 TOP ENTRY PCB MODULAR JACK(DIP TYPE)		
	.0 ±0.20 ±	APPV LUSHENG	DATE 2005/12/14			
.00 ±0.15 ±	MATERIAL :	QTY :	DRAWING NO. GE523014-LC		SIZE A3	REV 1
.000 ±0.075 ±	ANGLES ±	FINISH :	/PART NO. SEE NOTE			
THIRD ANGLE PROJECTION	SCALE : 3:1	DO NOT SCALE DRAWING	SHEET X OF Y			