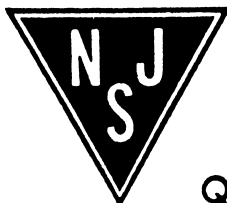
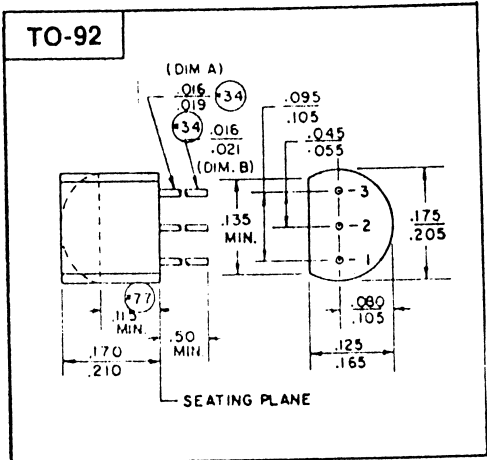


20 STERN AVE.
 SPRINGFIELD, NEW JERSEY 07081
 U.S.A.

TELEPHONE: (201) 376-2922
 (212) 227-6005
 FAX: (201) 376-8960

N-Channel JFETs

Type No.	Case Style	BV _{GSS} (V) @ I _G		I _{GSS} (nA) @ V _{DG}		V _p @ V _{DG}			I _{DSS} (mA) @ V _{DG}			R _e Y _{fs} (mmho) @ Freq		C _{iss} (pF) @ V _{DG} V _{GS}			C _{rss} (pF) @ V _{DG} V _{GS}			NF (dB) @ R _G = 1k Freq					
		Min	Max	Min	Max	Min	Max	I _D (nA)	Min	Max	V _{DG} (V)	Min	Max	Max	Max	Max	Max	Max	Max	Max	Max	Max			
2N3819	TO-92	25	1	2	15		8	15	2	2	20	15	1.6	100		8	15	0	-4	15	0	2.5	100		
2N3823	TO-72	30	1	0.5	20		8	15	0.5	4	20	15	3.2	200	200	200	200	6	15	0	-2	15	0	5	200
2N4223	TO-72	30	10	0.25	20	0.1	8	15	0.25	3	18	15	2.7	200	200	200	6	15	0	-2	15	0			
2N4224	TO-72	30	10	0.5	20	0.1	8	15	0.5	2	20	15	1.7	200	200	200	6	15	0	2	15	0	4	400	
2N4416	TO-72	30	1	0.1	20		6	15	1	5	15	15	4	400	100	400	4	15	0	0.8	15	0	4	400	
2N4416A	TO-72	35	1	0.1	20	2.5	6	15	1	5	15	15	4	400	100	400	4	15	0	0.8	15	0	4	400	
2N5078	TO-72	30	1	0.25	20	0.5	8	15		4	25	15	4	200	150	200	6	15	0	2	15	0	3	200	
2N5245	TO-92	30	1	1	20	1	6	15	10	5	15	15	4	400	100	400	4.5	15	0	1	15	0	4	400	
2N5246	TO-92	30	1	1	20	0.5	4	15	10	1.5	7	15	2.5	400	100	400	4.5	15	0	1	15	0			
2N5247	TO-92	30	1	1	20	1.5	8	15	10	8	24	15	4	400	150	400	4.5	15	0	1	15	0			
2N5248	TO-92	30	1	5	20	1	8	15	10	4	20	15	3	200	200	200	6	15	0	2	15	0			
2N5397	TO-72	25	1	0.1	15	1	6	10	1	10	30	10	5.5	450	200	450	5	10	10 mA	1.2	10	10 mA	3.5	450	
2N5398	TO-72	25	1	0.1	15	1	6	10	1	5	40	10	5.0	450	400	450	5.5	10	0	1.3	10	0	3.2	450	
2N5484	TO-92	25	1	1	20	0.3	3	15	10	1	5	15	2.5	100	75	100	5	15	0	1	15	0	3	100	
2N5485	TO-92	25	1	1	20	1	4	15	10	4	10	15	3	400	100	400	5	15	0	1	15	0	4	400	
2N5486	TO-92	25	1	1	20	2	6	15	10	8	20	15	3.5	400	100	400	5	15	0	1	15	0	4	400	
2N5668	TO-92	25	10	2	15	0.2	4	14	10	1	5	15	1	100	50	100	7	15	0	3	15	0	2.5	100	
2N5669	TO-92	25	10	2	15	1	6	15	10	4	10	15	1.6	100	100	100	7	15	0	3	15	0	2.5	100	
2N5670	TO-92	25	10	2	15	2	8	15	10	8	20	15	2.5	100	150	100	7	15	0	3	15	0	2.5	100	
2N5949	TO-92	300	1	1	15	3	7	15	100	12	18	15	3.0	100	75	100	6	15	0	2	15	0	5	100	
2N5950	TO-92	30	1	1	15	2.5	6	15	100	10	15	15	3.0	100	75	100	6	15	0	2	15	0	5	100	
2N5951	TO-92	30	1	1	15	2	5	15	100	7	13	15	3.0	100	75	100	6	15	0	2	15	0	5	100	
2N5952	TO-92	30	1	1	15	1.3	3.5	15	100	4	8	15	1.0	100	75	100	6	15	0	2	15	0	5	100	
2N5953	TO-92	30	1	1	15	0.8	3	15	100	2.5	5	15	1.0	100	50	100	6	15	0	2	15	0	5	100	
J300	TO-92	25	1	0.5	15	1	6	10	1	6	30	10	4.5	0.001	200	0.001	5.5	10	5 mA	1.7	10	5 mA	12	100	
J304	TO-92	30	1	0.1	20	2	6	15	1	5	15	15	14.2	400	180	100	13	15	0	1.8	15	0	14	400	
J305	TO-92	30	1	0.1	20	0.5	3	15	1	1	8	15	13.0	400	180	100	13	15	0	1.8	15	0	14	400	
J308	TO-92	25	1	1	15	1	6.5	10	1	12	60	10	8	0.001	200	0.001	7.5	0	-10	2.5	0	-10	11.5	100	
J309	TO-92	25	1	1	15	1	4.0	10	1	12	30	10	10	0.001	200	0.001	7.5	0	-10	2.5	0	-10	11.5	100	
J310	TO-92	25	1	1	15	2	6.5	10	1	24	60	10	8	0.001	200	0.001	7.5	0	-10	2.5	0	-10	11.5	100	



Quality Semi-Conductors