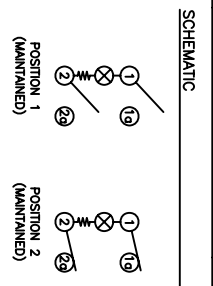


SUGGESTED PANEL CUTOUT

PANEL THICKNESS	X
0.030~0.049 [0.75~1.25]	0.874 [22.2]
0.049~0.079 [1.25~2.00]	0.882 [22.4]
0.079~0.118 [2.00~3.00]	0.890 [22.6]



**SPECIFICATIONS**

FUNCTION:  
2P1T OFF-ON

RATINGS:  
ANSI/UL 1054 and CAN/CSA C22.2 No. 55 (E194579):  
15A 125VAC [UR, cUR]  
10A 250VAC [UR, cUR]  
1/3HP 125/250VAC [UR, cUR]

ILLUMINATION VOLTAGE:  
12V

CONTACT RESISTANCE:  
Initial: 35mΩ Max. at 50VAC

INSULATION RESISTANCE:  
100MΩ Min. at 500VDC

DIELECTRIC STRENGTH:  
1,500VAC for 1 minute

ELECTRICAL LIFE:  
6,000 Cycles [UR, cUR]

TEMPERATURE:  
Operating: -20°C to 105°C [UR, cUR]



**COLORS AND MARKINGS**

BODY:  
Black

ACTUATOR:  
Transparent Blue

MARKING:  
None

MARKING COLOR:  
None

**MATERIALS**

BODY:  
Polyamide 6/6 (PA66), UL94 V-2

ACTUATOR:  
Polycarbonate (PC), UL94 V-2

LAMP CARRIER:  
Polyamide 6/6 (PA66), UL94 V-2

LAMP:  
Incandescent Bulb

SPRING:  
Steel

PLUNGER:  
Steel

CONTACTS:  
Silver Alloy Plated Copper

TERMINALS:  
Silver Plated Copper  
Silver Plated Brass

ACTUATOR	A	09/08/12	CAB
BODY	A <td>09/08/12 <th>CAB</th> </td>	09/08/12 <th>CAB</th>	CAB
COLORS	A <td>09/08/12 <th>CAB</th> </td>	09/08/12 <th>CAB</th>	CAB
MATERIALS	A <td>09/08/12 <th>CAB</th> </td>	09/08/12 <th>CAB</th>	CAB
SPECIFICATIONS	A <td>09/08/12 <th>CAB</th> </td>	09/08/12 <th>CAB</th>	CAB
REFERENCE	REV. <td>DATE <td>BY </td></td>	DATE <td>BY </td>	BY

1

2

3

4

5

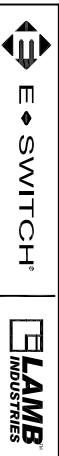
6

7

8

THE INFORMATION CONTAINED IN THIS DOCUMENT IS PROPRIETARY TO E-SWITCH-LAMB INDUSTRIES AND IS NOT TO BE COPIED OR TRANSMITTED

INCHES [MILLIMETERS]	DATE	BY
±0.008 [±0.2] / ±1'	20023 09/08/12	59
PROJECTION DRAWING NUMBER	DATE	REVISION
38-RA12C1000144	JUNE 06, 2012	A



RRA12C1000-144