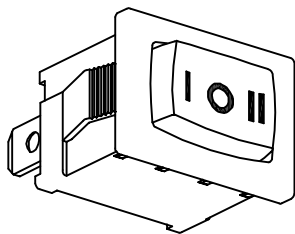
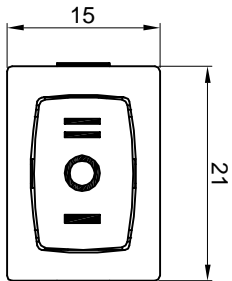






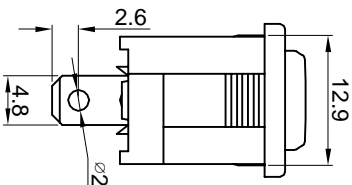
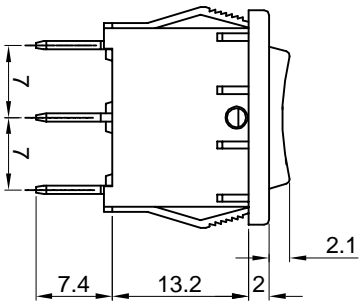
东莞市宏聚电子五金制品有限公司

HONGJU(DONGGUAN)ELECTRONIC & METAL PRODUCTS CO.,LTD

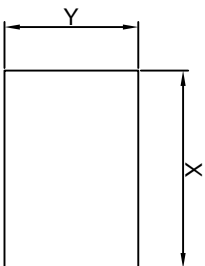
# MR-1



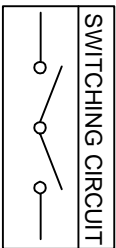
Rating: 10A 125V AC (UL CUL )   
 6A 250V AC (CQC ENEC VDE)   
 Contact Resistance: 50mΩ Max  
 Insulation Resistance: DC 500V 100MΩ Min  
 Dielectric Strength: AC1500V 1 minute  
 Dielectrical life: 10,000 cycles  
 Operating Temperature: 0°C~85°C



## CUT-OUT



尺寸	X	Y
0.75~1.25	19.2-0.1	13.0+0.1
1.25~2.00	19.4-0.1	13.0+0.1
2.00~3.00	19.8-0.1	13.0+0.1



**MATERIAL:**  
 Body:PC  
 Actuator:Nylon66, UL rated:94V-2 min  
 Terminal:Brass,silver or tin plated

0	1	2	3	4	5	6	7	8	9	A	B	C	D	E	F	G	H	J	L
None																			

公差 TOLERANCES		X±0.3		.XX±0.15		角度 ANGLE		±1°		单位		DIMENSION UNIT		mm.		
版本	VERSION	A1	比例尺	SCALE	NONE	日期	DATE	2015.07.17	品名	TITLE	MR-1-138-C6N-BBAA	图号	DRAWING NO	MR-1-138-C6N-BBAA	A1	
变更说明	CHANGE DESCRIPTION	重新整理后发行	核对	CHECKED BY		绘图	DRAWN BY									
版本 VER.	日期	DATE	日期	DATE	日期	DATE	日期	DATE	日期	DATE	日期	DATE	日期	DATE	日期	DATE
A1	2015.07.17	N/A	核 准	核 对	NONE	2015.07.17										
	APPROVED BY		CHECKED BY													