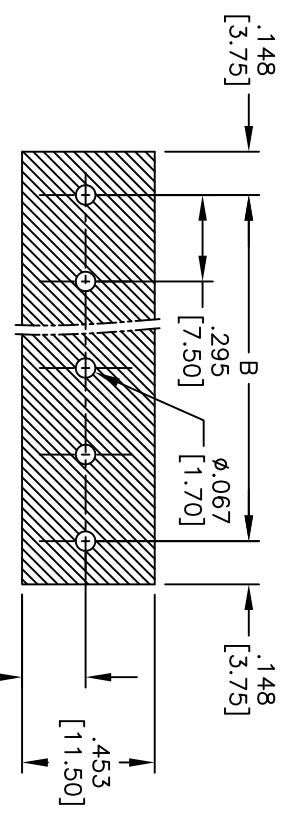
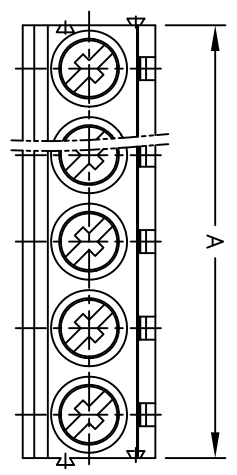
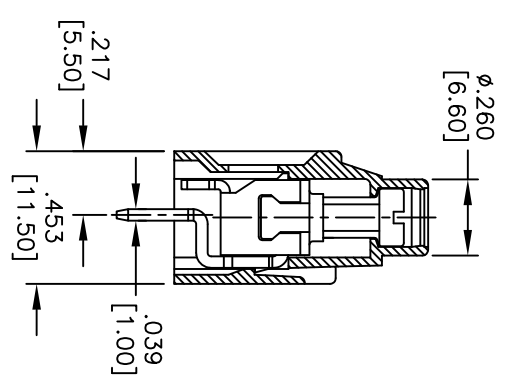
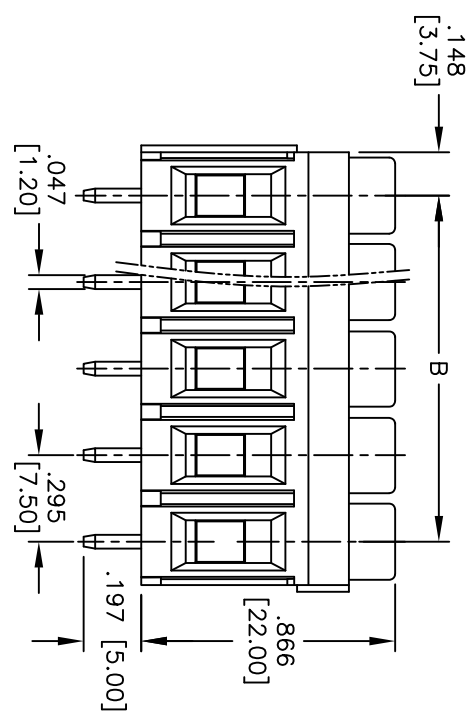


Rev	AWO #	Description	Date	Appr
-		RELEASED	10/12/10	

APPROVED: _____
 DATE: _____ TITLE: _____



RECOMMENDED PCB LAYOUT [5.50]



SPECIFICATIONS:

- Material: Insulator: Thermoplastic, rated UL 94V-0
- Insulator color: Green
- Solder Pin: Copper Alloy, Tin plated
- Wire cage: Steel, M3.5/Zn plated.
- Screw: Steel, M3.5/Zn plated.
- Electrical: Rating: 600V 5A
300V 30A
- Insulation withstands voltage: AC2000V at 1 minute
- Insulation resistance: 500 mohms min @ DC500V
- Mechanical: Screw Torque: 14kgf-cm
Solid wire: 24-10 AWG.
- Environmental: Operating temperature: -40°C to +105°C
Lead free, RoHS compliant.
- Recommended soldering temp: 235°C for 5 sec.



A = .295 [7.50] x No. of Positions
 B = .295 [7.50] x No. of Spaces

UNLESS OTHERWISE SPECIFIED
 ALL DIMENSIONS ARE MM [INCHES]
 TOLERANCES: EXCEPT AS NOTED

.X	± .10	ØX	± .10
.XX	± .020	ØXX	± .015
.XXX	± .015	ØXXX	± .010

APPROVALS

DRAWN	DY	10/12/10
CHECKED		
APPROVED		

ADAM TECH
 909 Rahway Avenue, Union, NJ 07083
 Phone: 908-687-5000 Fax: 908-687-5710

TITLE: **MODULAR EURO BLOCK, VERTICAL,**
295 [7.50] PITCH

SIZE	PART NO.	REV.
X	EB119-XX-M	-
REF: S00024T	SCALE: NTS	SHEET 1 OF 1