

6

5

4

3

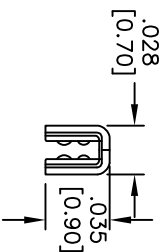
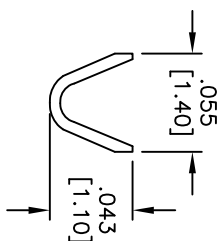
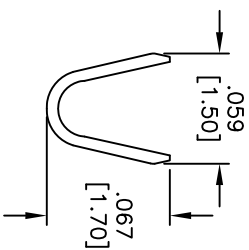
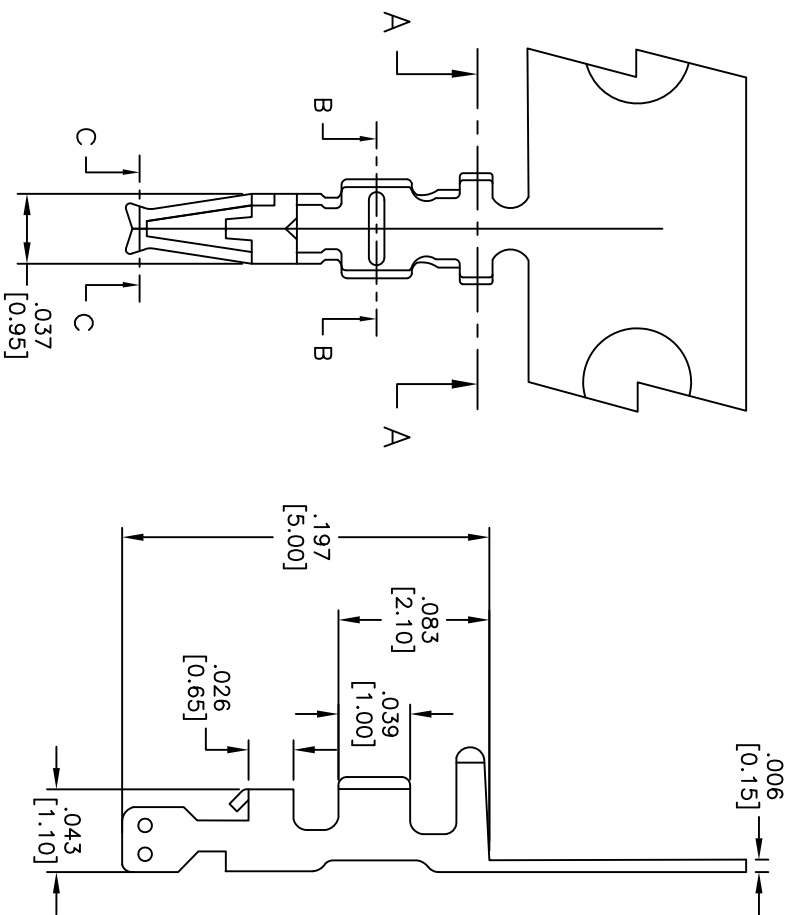
2

1

APPROVED: _____

DATE: _____ TITLE: _____

Rev	AWO #	Description	Date	Appr
-		RELEASED	11/11/08	
A		REDRAWN	11/18/10	



SPECIFICATIONS:

Material: Phospher Bronze

Plating: Tin Plated

Electrical:

Voltage rating: 100 VAC/DC max

Current rating: 1 Amp max

Contact Resistance: 20 mOhms Max.

Dielectric withstanding voltage: 500 VAC for 1 minute

Mechanical:

Wire Range: 28-32 AWG.

Insulation Range: 0.90mm Max.

Packaging: Chain Reel, 15,000 pcs / reel

Environmental:

Lead free, RoHS compliant.



UNLESS OTHERWISE SPECIFIED
ALL DIMENSIONS ARE INCHES [MM]
TOLERANCES: EXCEPT AS NOTED

INCHES	±.10	ØXX	±.10
.XX	±.020	ØXXX	±.015
.XXX	±.015	ØXXXX	±.010

APPROVALS

DRAWN	SS	DATE	11/11/08
CHECKED			
APPROVED			

ADAM TECH
909 Railway Avenue, Union, NJ 07083
Phone: 908-687-5000 Fax: 908-687-5710

TITLE: 1.25mm TERMINAL FOR 125CH-D
CRIMP HOUSING

SIZE	PART NO.	SCALE	SHEET 1 OF 1
X	125CTD-R	NIS	A
REF:	S00723T		

6

5

4

3

2

1