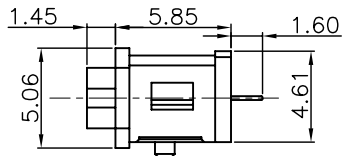
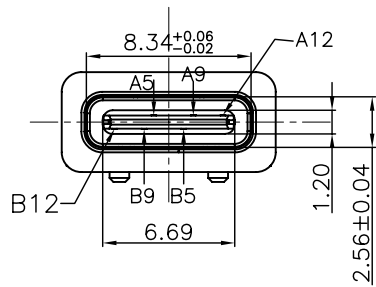
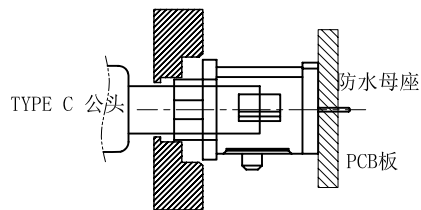
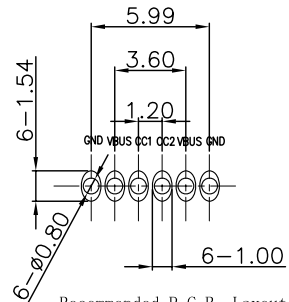


- NOTES:  
SPECIFICATION:
1. CURRENT RATING: 3.0A MAX
  2. DIELECTRIC WITHSTAND VOLTAGE: 100VAC
  3. TEMPERATURE RANGE: -30 °C ~ 85 °C
  4. CONTACT RESISTANCE: 40 MILLIONHM MAX
  5. INSULATION RESISTANCE: 100 MEGOHMS MIN.
  6. INSERTION FORCE : 5N~20N
  7. UNMATING FORCE: 8N~20N
  8. DURABILITY:5000 CYCLES



|     |             |     |             |
|-----|-------------|-----|-------------|
| A5  | CC1         | B12 | GND         |
| A9  | VBUS        | B9  | VBUS        |
| A12 | GND         | B5  | CC2         |
| PIN | SIGNAL NAME | PIN | SIGNAL NAME |



组装示意图

|      |           |       |   |  |
|------|-----------|-------|---|--|
| 4    | Shell1    | 1     | SUS301 Ni Plating T=0.25mm                          | Ni:40~120u";   |
| 3    | Housing2  | 1     | LCP (G. F30%)                                       |  |
| 2    | Contact   | 5     | Phosphor bronze C5210R-EH<br>Au/Ni Plating T=0.20mm | Ni:40~160u";<br>Au:CONTACT AREA:3u",<br>OTHER AREA:G/F |
| 1    | Housing   | 1     | PA9T (G. F30%)                                      |  |
| ITEM | PART NAME | Q' TY | FINISH  | NOTE   |

RECOMMENDED PCB LAYOUT(TOP VIEW)

THICKNESS T=1.0mm  
DEFAULT TOLERANCE+/-0.05

Recommended P.C.B. Layout  
Unspecified tolerance:±0.05  
(Top view)

**深圳市华宇创精密电子有限公司**

|   |                                      |   |
|---|--------------------------------------|---|
| <b>TOLERANCE:</b><br>X.X ±0.30<br>X.XX ±0.25<br>X.XXX ±0.15<br>X.' ±2' X.X' ±0.5' | DRAWN BY : 陈一鸣<br>DATE : 2014-02-23  | PART NAME:<br>防水USB TYPE C 母座6P 立式插件          |
|   | CHECKED BY: 马跃<br>DATE : 2014-02-23  | PART NO. HYCW243-USBC06-890B<br>MOLD NO.      |
| UNIT: mm [inch]<br>SCALE:1:1 SIZE: A4   | APPROVED BY: 邱敏<br>DATE : 2014-02-23 | DRAW NO: HYC-USB201215234<br>SHEET NO. 1 OF 1 |