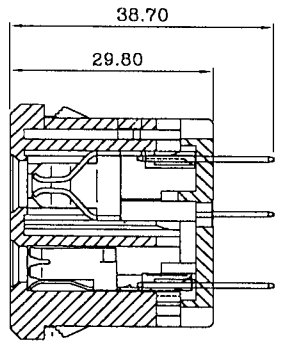
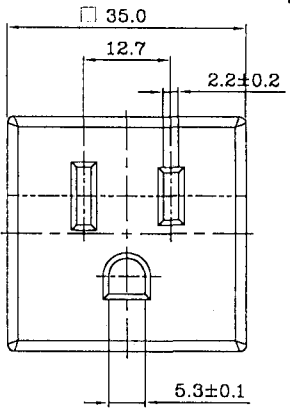
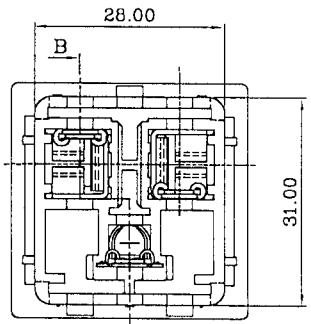


PANEL CUT-OUT



B-B



B

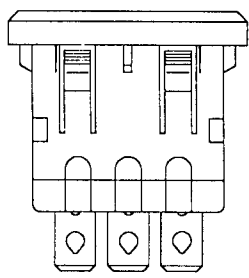
MATERIAL:
 Housing & Back Cover: Nylon, UL-94V-0 color black
 Contacts: Copper alloy

ELECTRICAL SPECIFICATIONS:
 Rated current & voltage: 15A 125VAC

MECHANICAL SPECIFICATIONS:
 Panel thickness range: 1.0mm - 1.8mm

APPROVALS: us

RoHS
 COMPLIANT



REV	DATE	APPR
CHNG	CHANGE	CHK
REVISIONS		

TOLERANCE UNLESS OTHERWISE SPECIFIED	
X	± 1
XX	± 0.4
XXX	± 0.20
DRAWN BY	PB
DATE:	4/14/09
CHECK BY	DATE:
APPR BY	DATE:

Power Dynamics, Inc.	
Phone: 973 560-0019 Whippany, New Jersey Fax: 973 560-0076	
PART: NEMA 5-15R; 6.4 Q.C. TAB SNAP IN PANEL MOUNT RECEPTACLE	
PART #:	PD-515R-6
SIZE:	A
SCALE:	NTS
ALL DIMENSIONS FOR REFERENCE ONLY DIMENSIONS ARE IN MILLIMETERS	
SHEET	1 of 1
REV.	