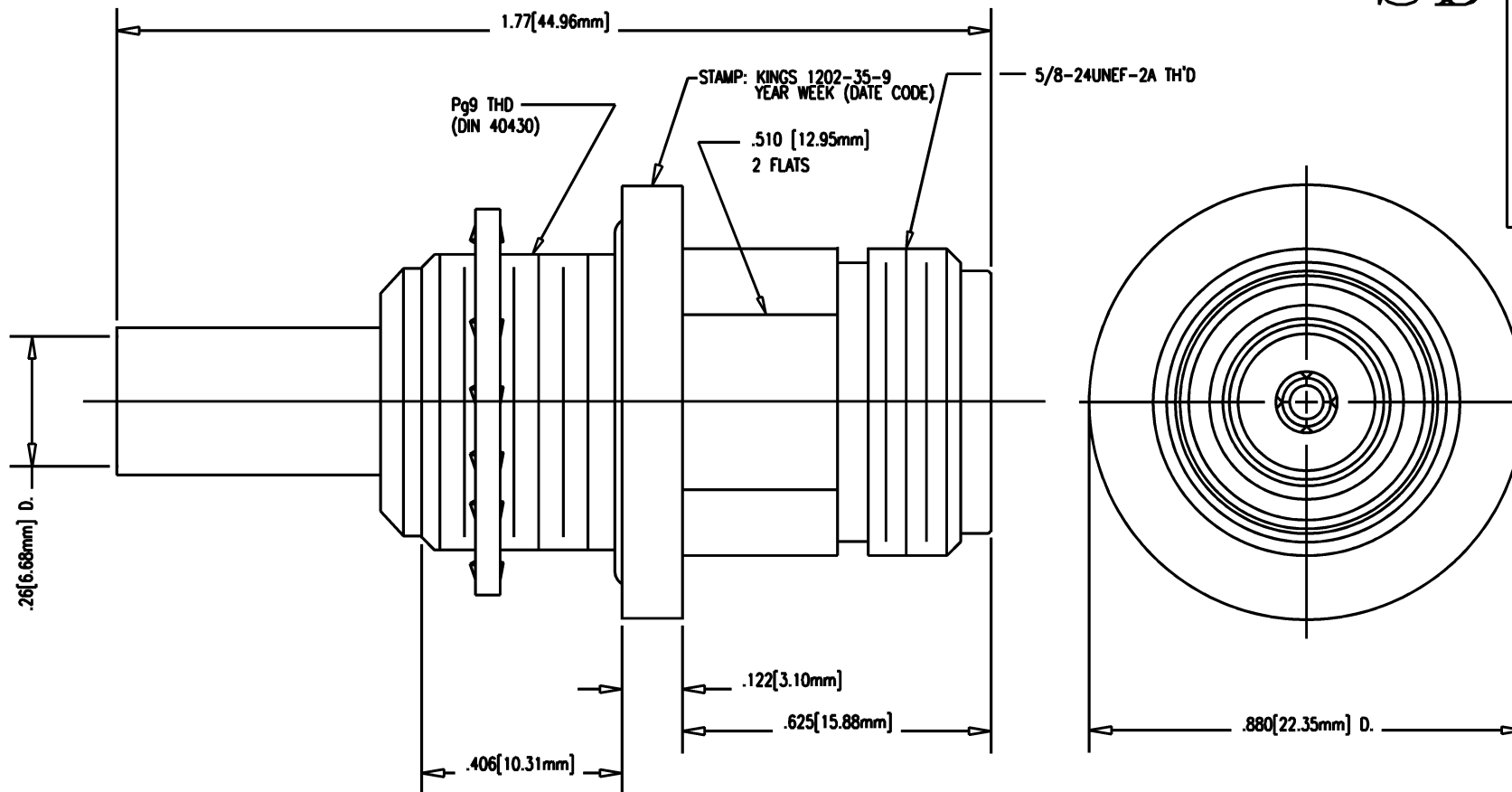


DASH NO.	M CODE	MADE FROM
----------	--------	-----------

SD

1202-35-9



REVISIONS	
ISSUE	CHANGES
0	ER 37228 VLS 12/10/96
1	CN 37296 A VLS 03/07/97
2	CN 37337 A VLS 04/08/97
3	CN 37369 E JW 05/20/97

120235S

NOTES:

- FOR USE WITH ERICSSON T250025 CABLE.
- FOR CABLING INSTRUCTIONS SEE 3-440-2.
- FOR CRIMPING USE DIE SIZE KTH-2002.
- INTERFACE PER MIL-STD-348, FIG. 304-2.
- CENTER CONTACT SUPPLIED UNASSEMBLED.
- MARK PACKAGE: KINGS 1202-35-9
YEAR WEEK (DATE CODE)
- MATERIALS:
INSULATOR-TEFLON, ASTM-D-4894
CENTER CONTACT-BER. COPPER, ASTM-B-196
CRIMP SLEEVE & LOCKWASHER-COM. BRONZE, ASTM-B-140
O-RING-SIL. RUBBER, ZZ-R-765
ALL OTHER METAL-BRASS, ASTM-B16
- FINISHES:
CENTER CONTACT-GOLD PLATE PER MIL-G-45204
ALL OTHER METAL-KINGS TIN ALLOY (TR3)
- ELECTRICAL:
NOMINAL IMPEDANCE-50 OHMS
FREQUENCY RANGE-DC TO 11 GHZ
WORKING VOLTAGE-1000 VRMS

SCALE	4:1	
APPROX SURFACE AREA		
WAS:	E-19436	
USED ON		
REF:		
JK, BKHD, N		
DRAWN	VLS	DATE 12/10/96
DESIGN	VLS	DATE 12/10/96
APPR.	FDH	DATE 02/18/97

SD

 TUCKAHOE, NEW YORK 10707	
1202-35-9	