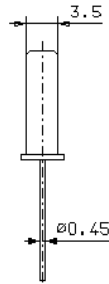
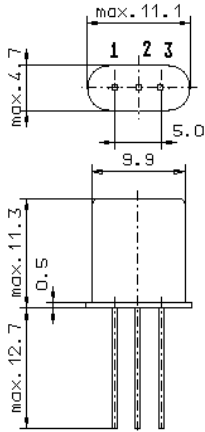


Specification for monolithic crystal filter:

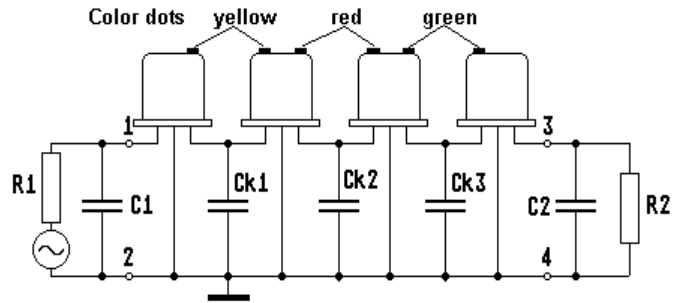
MQF 10.7-1680/08

1. General

1.1. Package: 4 x GH 3 (each filter consists of 4 pcs. of matched duals)



GH3



- 1.2. Type name: MQF 10.7-1680/08
- 1.3. Number of poles: 8
- 1.4. Operating temperature range: -40°C to +85°C
- 1.5. Storage temperature range: -55°C to +105°C

2. Electric values

- 2.1. Nominal centre frequency fo: 10.7 MHz
- 2.2. **Pass band**
 - 2.2.1. Bandwidth between 6 dB - frequencies: $\geq f_0 \pm 8.4$ kHz
 - 2.2.2. Ripple: ≤ 2.0 dB at $f_0 \pm 7.0$ kHz
 - 2.2.3. Insertion loss: ≤ 3.0 dB
(measured on smallest attenuation in pass band)
- 2.3. **Stop band**
 - 2.3.1. $f_0 \pm 16.6$ kHz ≥ 45 dB
 - 2.3.2. $f_0 \pm 24.5$ kHz ≥ 90 dB
 - 2.3.3. Alternate attenuation: ≥ 90 dB (except spurious)
- 2.4. Terminating impedance (input and output): $5300 \Omega // 0$ pF
 - 2.4.1. Coupling capacitance Ck1,Ck3: 1.8 pF
Ck2: 2.5 pF
- 3. Marking: manufacturer, date code
MQF 10.7-1680/08
- 4. Environment conditions: Corresponding to Vectron standard CF001

Edited by: _____ date: _____ name: _____