

# FPM-3191G

## 9U Rackmount 19" SXGA Industrial Monitor with Resistive Touchscreen, Direct-VGA and DVI Ports



### Features

- 19" SXGA TFT LED LCD with 50,000 backlight life time
- Robust design with stainless steel chassis and aluminum front panel
- Anti-glare screen with tempered glass and IP65 certified front panel
- Lockable OSD control pad on rear cover
- Supports industrial 24 V<sub>DC</sub> power input
- Supports panel, wall, desktop, rack or VESA arm mounting
- Supports 9U pre-drill Rackmount mounting hole

### Introduction

FPM-3191G is a 19" color TFT LCD flat panel monitor specifically designed for industrial applications. With a viewing size as large as 19", it presents an simple display area as well as vivid and sharp images for your HMI. It features direct VGA signal transmission. You can thus upgrade the displays without making changes to the existing system. The onscreen display function also makes it easy to adjust the images on the screen. The whole chassis is designed in stainless steel and the front panel is made of aluminum with front panel IP65 compliance.

### Specifications

#### General

- **Button Controls** OSD (Onscreen Display) control pad on front panel
  - **Certification** BSMI, CCC, CE, FCC Class A, UL
  - **Dimensions (W x H x D)** 482mm x 399mm x 67 mm (18.98" x 15.71" x 2.64")
  - **Enclosure** Front panel: Aluminum with coating  
Rear cover: Stainless steel chassis
- \*Mounting holes on rear cover are designed for PWR-246E DC Source
- **Mounting** Panel, wall, desktop, VESA arm & 19" rackmount
  - **Power Input** Phoenix Jack: 24 V<sub>DC</sub> input  
DC Jack: external 57 W power adapter, with 100 ~ 240 V<sub>AC</sub> input and 12 V<sub>DC</sub> @ 4.75 A output

Note: AC power adapter is included.

- **Power Consumption** 35 W + 20%
- **Video Port** VGA & DVI-D port
- **Weight (Net)** 10.65 kg (23.46 lbs)

#### LCD Display

- **Display Type** SXGA TFT LCD with LED backlight
- **Display Size** 19"
- **Max. Resolution** 1280 x 1024
- **Max. Color** 16.7 M
- **Viewing Angle (H/V°)** 170/160
- **Luminance (cd/m<sup>2</sup>)** 350
- **Backlight Life (hrs)** 50,000
- **Contrast Ratio** 1000:1

#### Touchscreen (Optional)

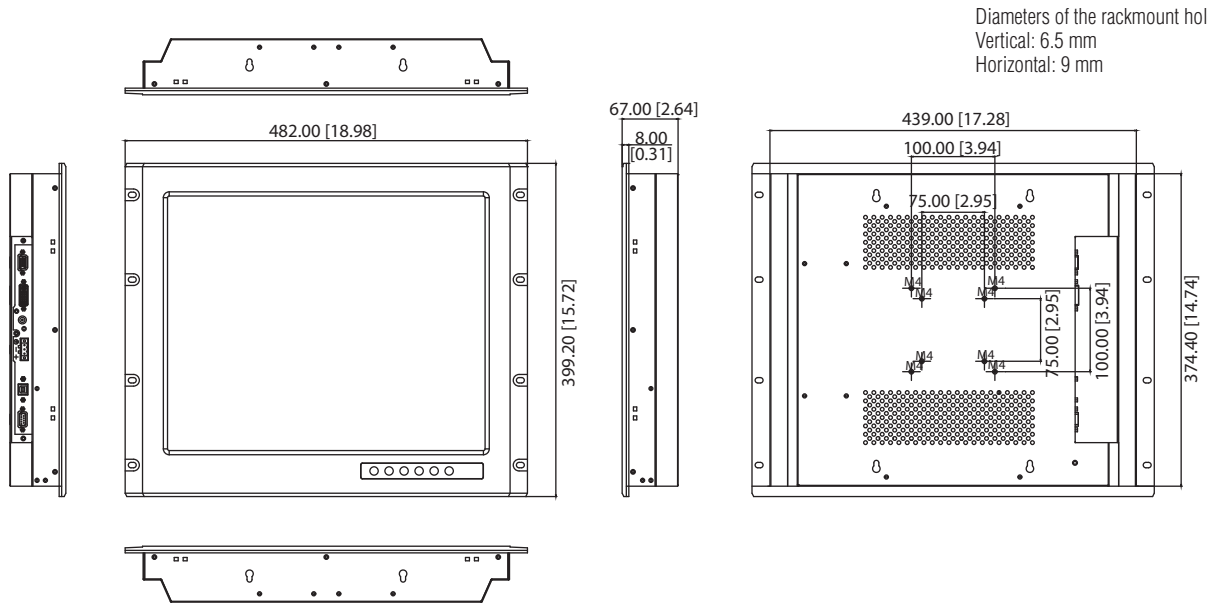
- **Type** 5-wire Resistive
- **Interface** RS-232 and USB
- **Lifespan** 35 million touches at a single point
- **Light Transmission** 80% ±5
- **OS Support** Windows XP, Vista, 7, 8, XPe, CE and Linux
- **Power Consumption** +5 V @ 100 mA
- **Touch Resolution** Linearity

#### Environment

- **Operation Temperature** 0 ~ 50°C (32 ~ 122°F)
- **Storage Temperature** -20 ~ 60°C (-4 ~ 140°F)
- **Humidity (Storage)** 10 ~ 90% non-condensing
- **Waterproof** Front panel is IP65 compliant
- **Vibration** 5 ~ 500 Hz, 1 Grms (Operating, Random)

## Dimensions

Unit: mm [inch]



Panel Cut-out Dimensions: 444 x 376.4 mm (17.48" x 14.82")

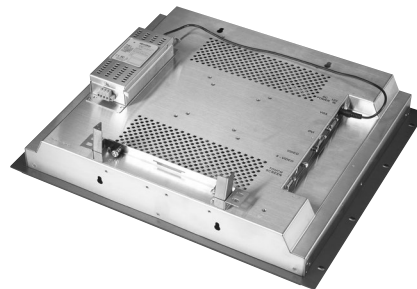
## Ordering Information

- **FPM-3191G-X0AE** 19" SXGA Ind. Monitor with VGA, DVI
- **FPM-3191G-R3AE** 19" SXGA Ind. Monitor w/ Resistive TS (Combo)

## Accessories

- **1702002600** Power Cable US Plug 1.8 M
- **1702002605** Power Cable EU Plug 1.8 M
- **1702031801** Power Cable UK Plug 1.8 M
- **1700000596** Power Cable China/Australia Plug 1.8 M  
(Direct rack mounting, no need accessory)

## Mounting with DC Source



## I/O View

