



**FEATURES:**

- AC Input 100~277 Vac Nominal
- Built-in Active Power Function Correction
- Protection: SCP / OVP / OTP
- High Operating Ambient Temp.: -30 °C ~ +50 °C
- Surge Protection: L-N 6 kV
- Safety: Meets UL
- EMI: FCC / Meets CE
- Comply with Indoor/Outdoor Waterproof (IP 67)
- Warranty: 5 years @ T.C < 75 °C (refer to LinkCom warranty policy)
- RoHS Compliant
- 0V-10V Dimming

PRODUCT SPECIFICATION						
MODEL	DC OUTPUT POWER(W)	DC OUTPUT VOLTAGE(V)	OUTPUT CURRENT(A)	OUTPUT CURRENT TOLERANCE	EFFICIENCY	O/P NOISE(P-P, V)
DBFE-0100U402-00	96	15-24	4	±5%	88.0%	1% Vo(max.)
DBFE-0100U272-00	96	22-36	2.7	±5%	88.5%	1% Vo(max.)
DBFE-0100U232-00	96	24-42	2.3	±5%	89.0%	1% Vo(max.)
DBFE-0100U202-00	96	26-48	2	±5%	89.0%	1% Vo(max.)
DBFE-0100U182-00	96	30-54	1.8	±5%	90.0%	1% Vo(max.)

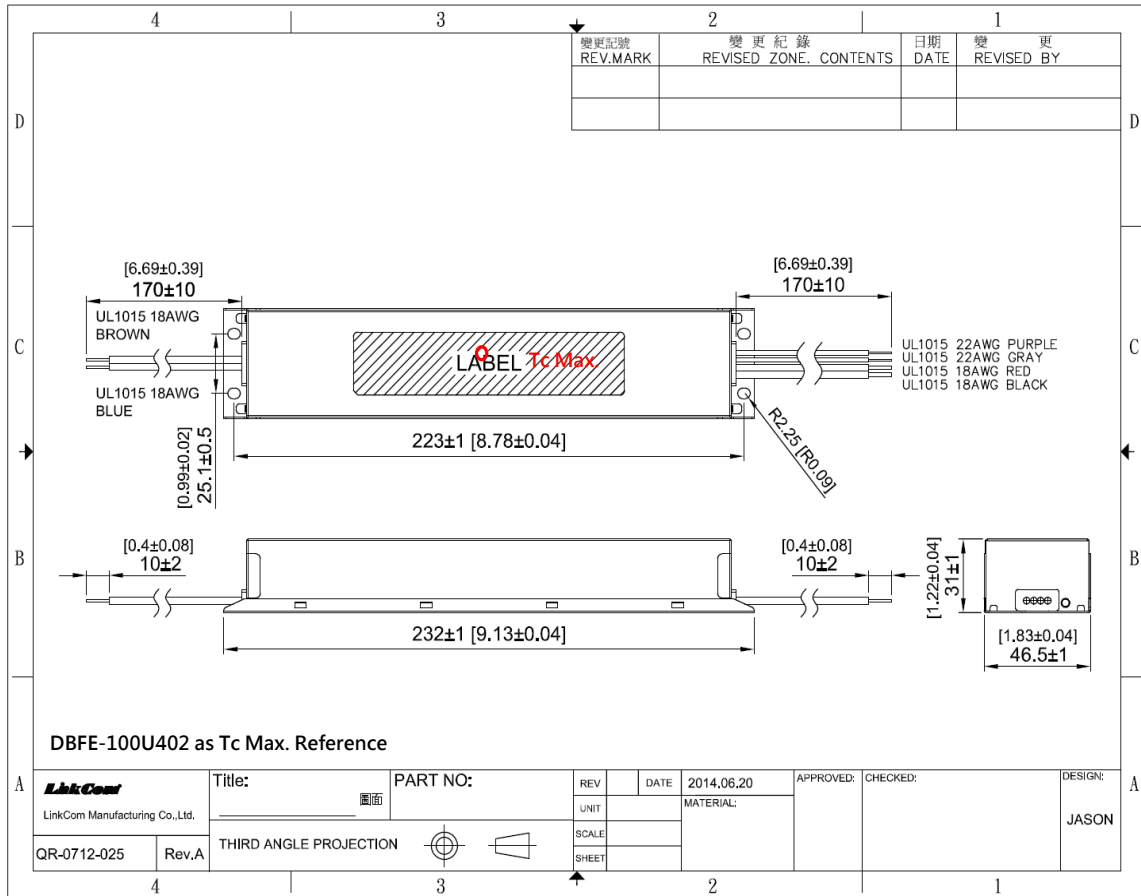
ELECTRICAL SPECIFICATION	
INPUT VOLTAGE RANGE	90-305 Vac, 127-431 Vdc, Normal: 100-277 Vac
INPUT FREQUENCY	Range: 47-63 Hz, Normal: 50-60 Hz
ACTIVE POWER FACTOR	> 0.9 @ Full Load 100-277 Vac
THD	< 20 % at Full Load 100-277 Vac
TURN ON DELAY TIME	<1s at Full Load 100-277 Vac
AC CURRENT	1.5 A / 100 Vac 0.6 A / 277 Vac
INRUSH CURRENT (typ)	Cold Start 65 A @ 230 Vac
LEAKAGE CURRENT	<0.75 mA at 277 Vac
SHORT CIRCUIT PROTECTION	SCP and OVP will restart automatically after the fault condition is removed
OVER VOLTAGE PROTECTION	
OVER TEMP. PROTECTION	shut down and latch off o/p voltage , re-power on to recover
OPERATING TEMP.	-30°C ~ +50°C @ Full Load 100-277 Vac
STORAGE TEMP.	-40°C ~ +80°C
RELATIVE HUMIDITY	10% to +90%, non-cond.
SAFETY	Meets UL 8750
EMI	FCC Part15 / Meets EN 55015
WITHSTAND VOLTAGE	I/P-O/P : 4242 Vdc, I/P-FG : 2121 Vdc
ISOLATION RESISTANCE	I/P-O/P, I/P-FG,O/P-FG :100M Ω / 500 Vdc / 25°C / 70% RH
DIMENSION (L*W*H)	232 * 46.5 * 31 mm 【9.13 * 1.83 * 1.22 inch】

- (1) All parameters specified at 230 Vac input unless otherwise noted.  
 (2) All specifications Typical at 25°C, unless otherwise noted, at normal line and load.  
 (3) Ripple and Noise measured directly at pins/terminals at nom. load, 0.1uF bypass and 47uF electrolytic, pk-pk at 20MHz bandwidth.  
 (4) Specified for free-air convection cooling.  
 (5) Minimum load is NOT required for proper operation .  
 (6) 100% Production Tested.

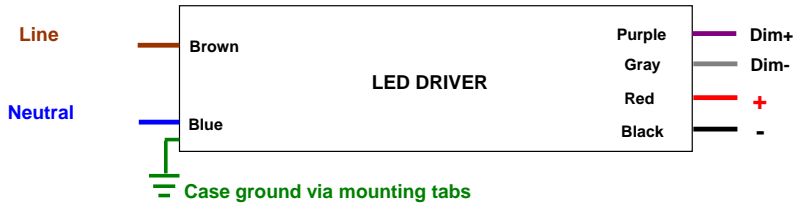
\* REFERENCE: [www.linkcom.com.tw](http://www.linkcom.com.tw)

\* Please contact [sales@linkcom.com.tw](mailto:sales@linkcom.com.tw), [sales@linkcomusa.com](mailto:sales@linkcomusa.com) for more information

**DIMENSIONS**



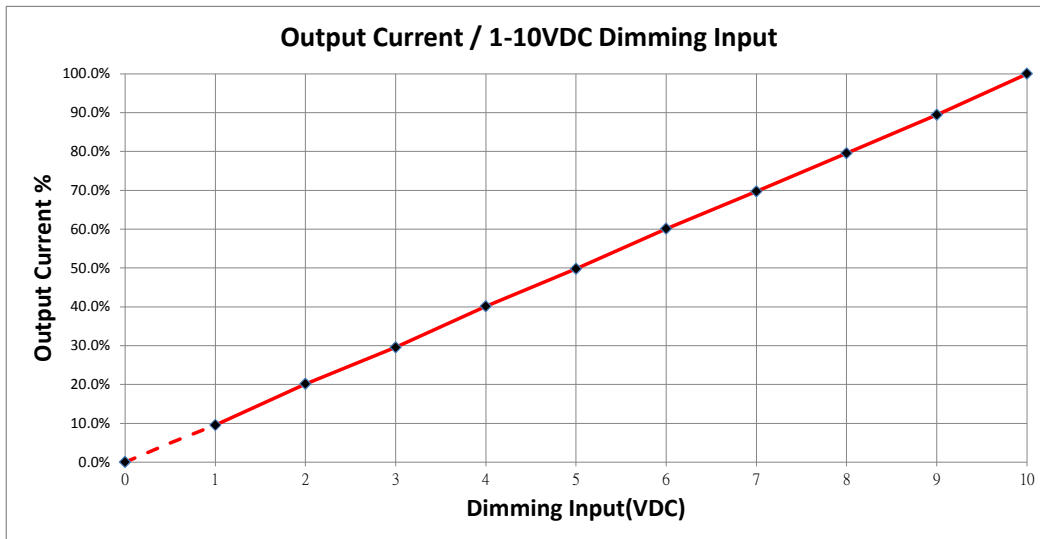
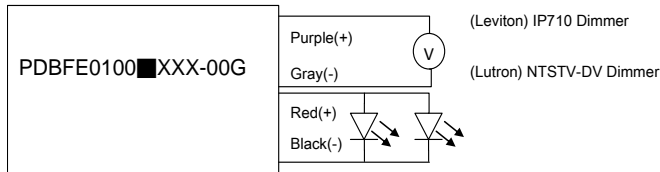
**Wiring Diagram**



\* REFERENCE: [www.linkcom.com.tw](http://www.linkcom.com.tw)

**DIMMING OPERATION**

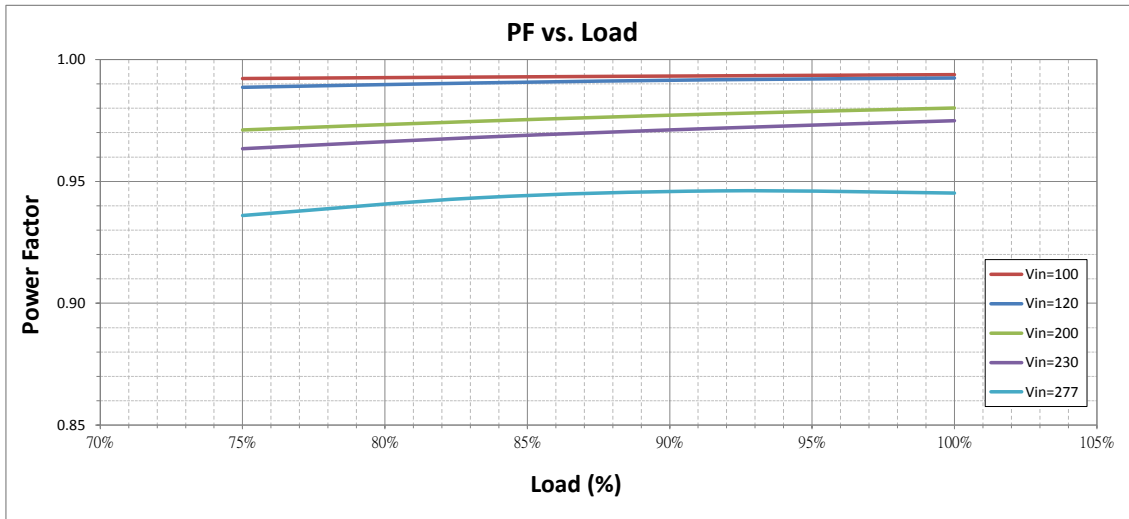
Parameters	Minimum	Typical	Maximum
Absolute maximum voltage on the 1-10(+) Purple Wire	1V	—	10V
Source current on the 1-10V(+) Purple Wire	0mA	—	1mA



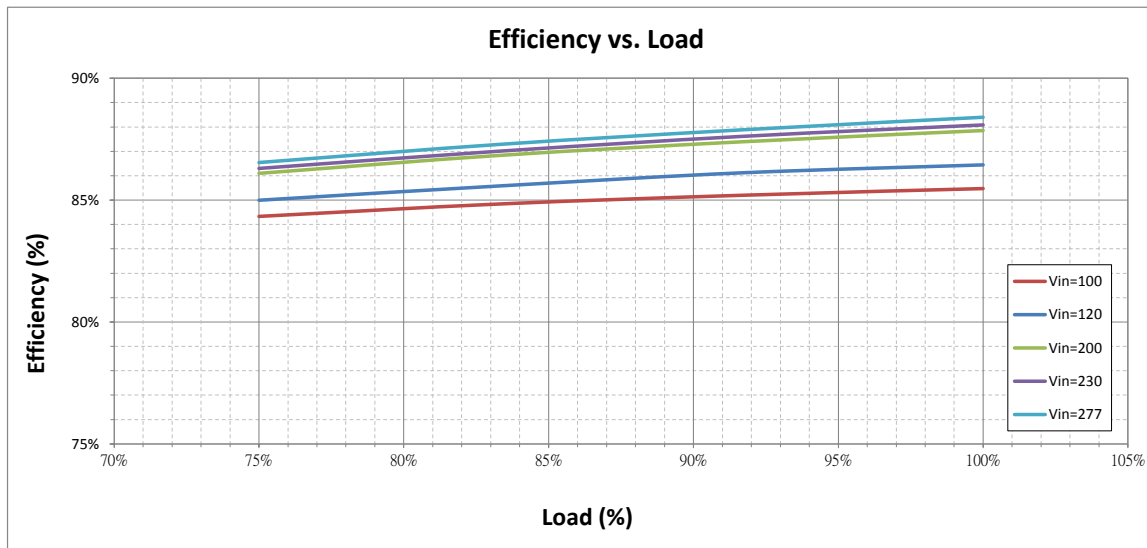
**Notes:**

1. Purple and Gray wires on the output side are used for 1-10V dimming.
2. Recommended dimmers are Leviton IP710, Lutron NTSTV-DV or equivalent.
3. When dimming wires +Purple/-Gray are left open, the output current will be at 100%

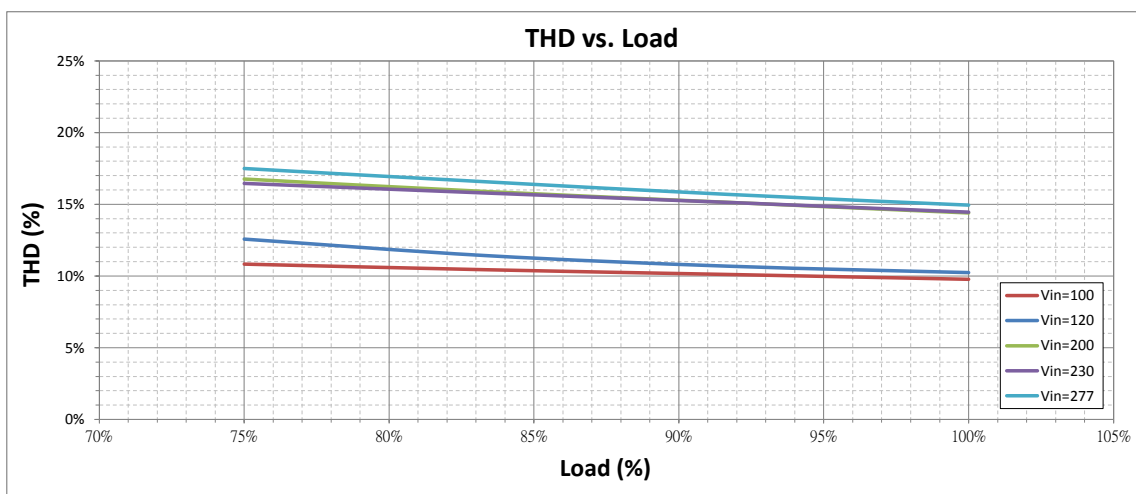
**Power Factor vs. Load (DBFE-100U402-00)**



**Efficiency vs. Load (DBFE-100U402-00)**



**T.H.D vs. Load (DBFE-100U402-00)**



**Output Current vs. Load (DBFE-100U402-00)**

