

### EMI Filtering TVS For Wireless Headsets.

#### FEATURES

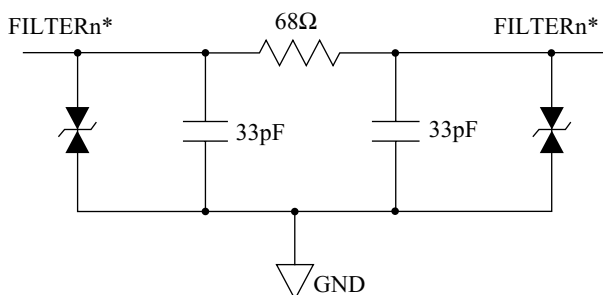
- EMI/RFI filtering.
- ESD Protection to IEC 61000-4-2 Level 4.
- Low insertion loss.
- Good attenuation of high frequency signals.
- Low clamping voltage.
- Low operating and leakage current.

#### MAXIMUM RATING (Ta=25 °C)

| CHARACTERISTIC        | SYMBOL    | RATING    | UNIT |
|-----------------------|-----------|-----------|------|
| DC Power Per Resistor | $P_R$     | 100       | mW   |
| Power Dissipation     | $*P_D$    | 400       |      |
| Junction Temperature  | $T_j$     | 150       | °C   |
| Storage Temperature   | $T_{stg}$ | -55 ~ 150 | °C   |

\* Total Package Power Dissipation

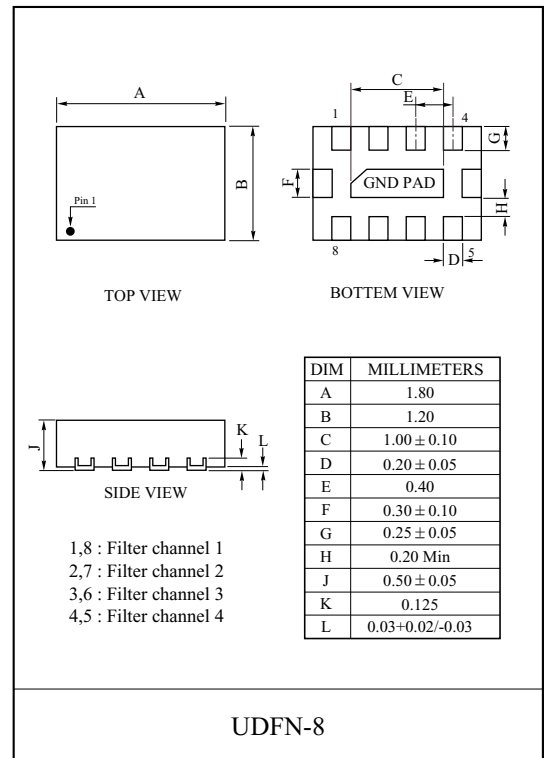
#### EQUIVALENT CIRCUIT



#### ELECTRICAL CHARACTERISTICS (Ta=25 °C)

| CHARACTERISTIC            | SYMBOL     | TEST CONDITION                        | MIN. | TYP. | MAX. | UNIT     |
|---------------------------|------------|---------------------------------------|------|------|------|----------|
| Reverse Stand-Off Voltage | $V_{RWM}$  | -                                     | -    | -    | 5    | V        |
| Reverse Breakdown Voltage | $V_{BR}$   | $I_T=1mA$                             | 6    | -    | -    | V        |
| Reverse Leakage Current   | $I_R$      | $V_{RWM}=3.3V$                        | -    | -    | 0.5  | $\mu A$  |
| Resistance                | R          | Between Input and Output              | -    | 68   | -    | $\Omega$ |
| Capacitance               | $C_{0V}$   | $V_R=0V$ , Between I/O Pins and GND   | -    | 100  | -    | pF       |
|                           | $C_{2.5V}$ | $V_R=2.5V$ , Between I/O Pins and GND | -    | 66   | -    |          |

# TENTATIVE



#### MARKING

