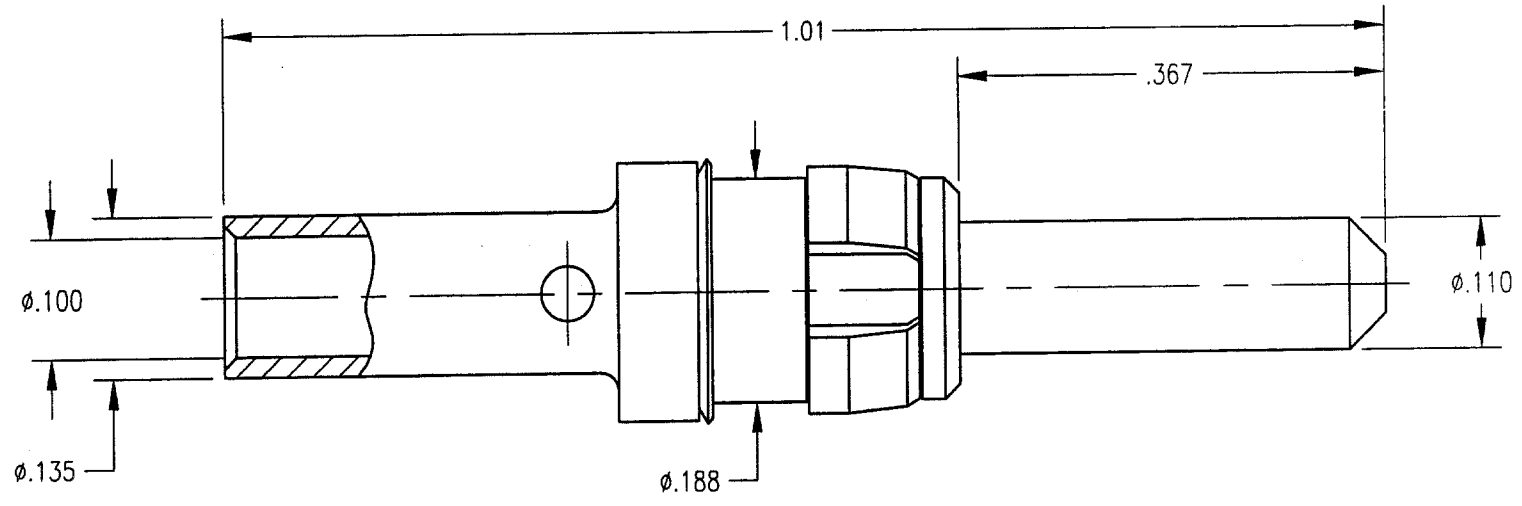


DWG. NO.		220-910-0003G	
REV	DESCRIPTION	BY DATE	APPD
A	ECN 2364	0007/2/98 JMC	4/13/99



NOTES:

1. MATERIALS:
 BODY: BRASS PER ASTM B16
 CLIP RING: BERYLLIUM COPPER PER ASTM B194
 SPRING WASHER: PHOSPHOR BRONZE PER ASTM B103
2. FINISH:
 BODY: .000030 MIN. GOLD PER MIL-G-45204 OVER
 .000050 MIN. NICKEL PER QQ-N-290
 CLIP RING: .000100 MIN. NICKEL PER QQ-N-290
 OVER COPPER FLASH
 SPRING WASHER: .000005 MIN. GOLD PER MIL-G-45204 OVER
 .000050 MIN. NICKEL PER QQ-N-290
3. ELECTRICAL:
 CURRENT RATING: 20 AMPS
4. FOR USE WITH 12 AWG WIRE OR EQUIVALENT.

PER ASME Y14.5M-1994 UNLESS OTHERWISE SPECIFIED: DIMENSIONS ARE IN INCHES (MM)		Litton	
TOLERANCES: DECIMALS .XX ± .01/0.254 .xxx ± .005/0.127 ANGLES ± 2°		Winchester/Retconn 400 Park Road Watertown, Connecticut 06795	
CUSTOMER DRAWING		TITLE	
DRAWN: JED DATE: 4/13/99 CHECKED: KJT DATE: 4/13/99		RDM HIGH POWER PLUG 10/20 AMP	
APPROVED: JMC DATE: 4/13/99		SCALE: 6:1	
A		220-910-0003G	
SHT. 1		OF 1	
REV. A			