

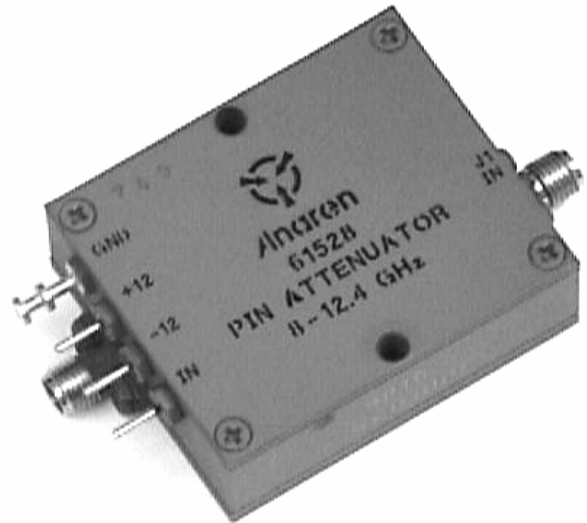
Attenuators PIN Diode

Applications

- Load Sensing Devices
- Precision Attenuation Controllers
- Instrumentation

Features

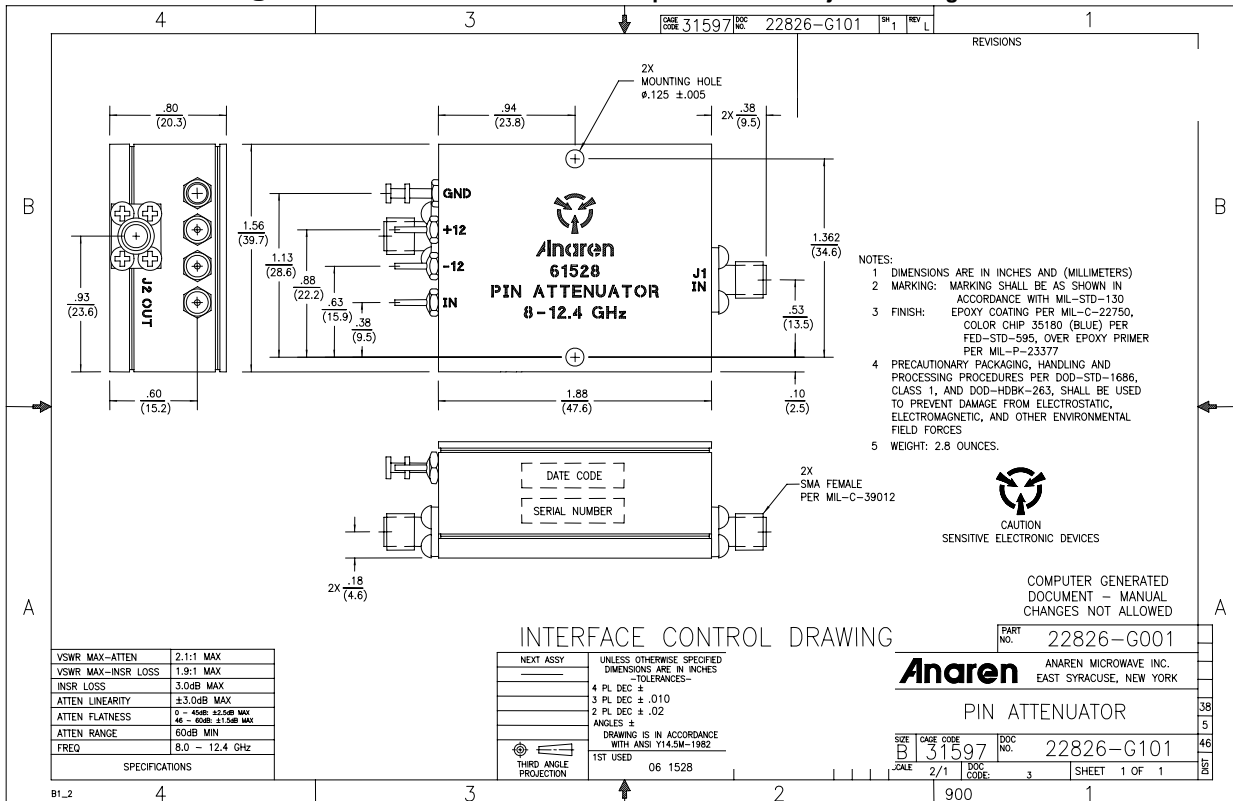
- Military Grade
- 8.0 – 12.4 GHz
- Low VSWR
- Flat Response
- Supply Voltages: +12V @ 120mA, -12V @ 40mA
- Control Voltage 0 to 10 volts (6dB/Volt) Typical
- Connectors Per MIL-C-39012
- Meets MIL-E-5400 Class 3 Requirements



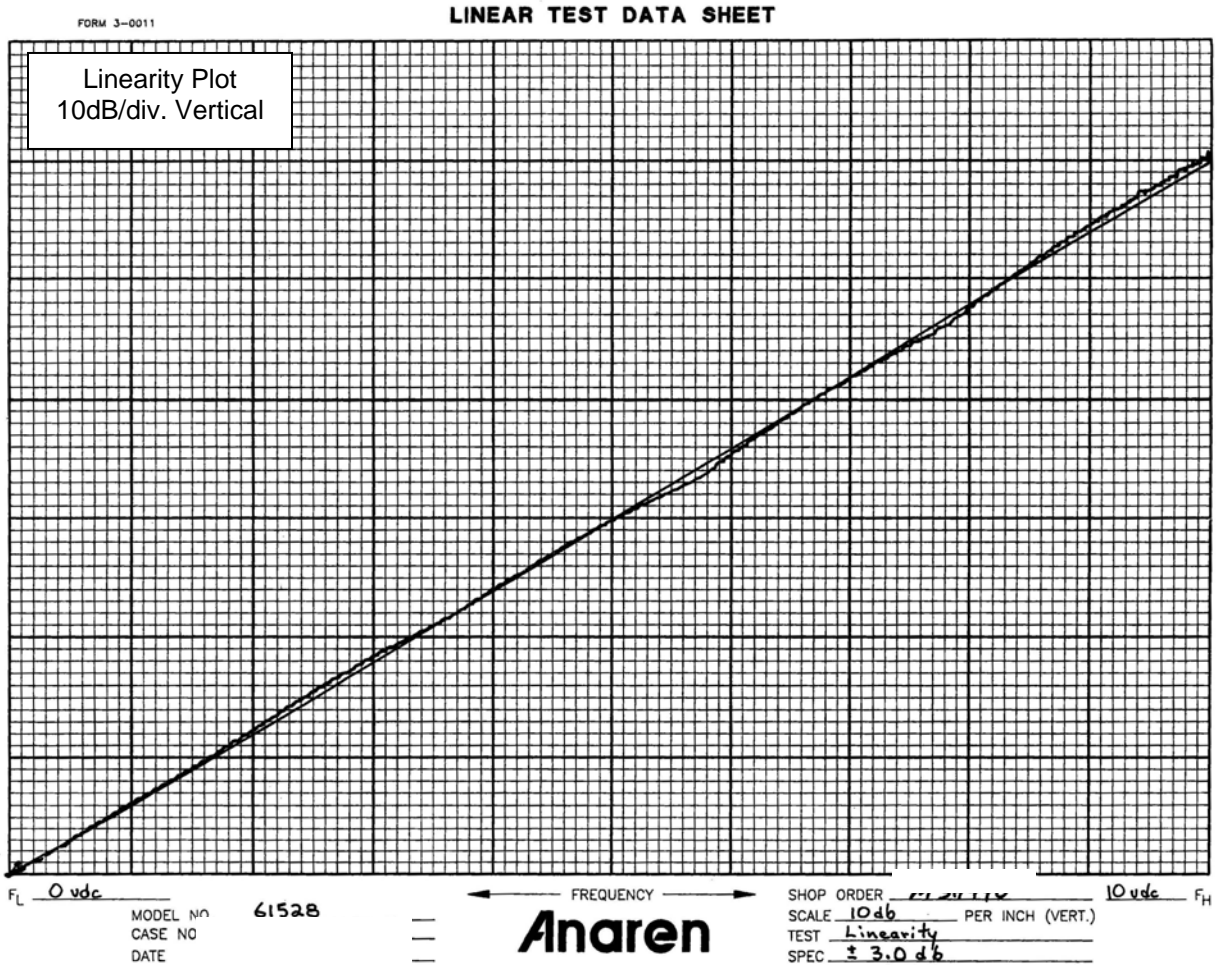
NOTES: Model has 10,000 ohm drive impedance and 100 kHz drive bandwidth. Flatness Specified to 45 dB, add +/- 1.5dB to 60 dB.

Electrical and Mechanical Specifications subject to change without notice

Outline Drawing

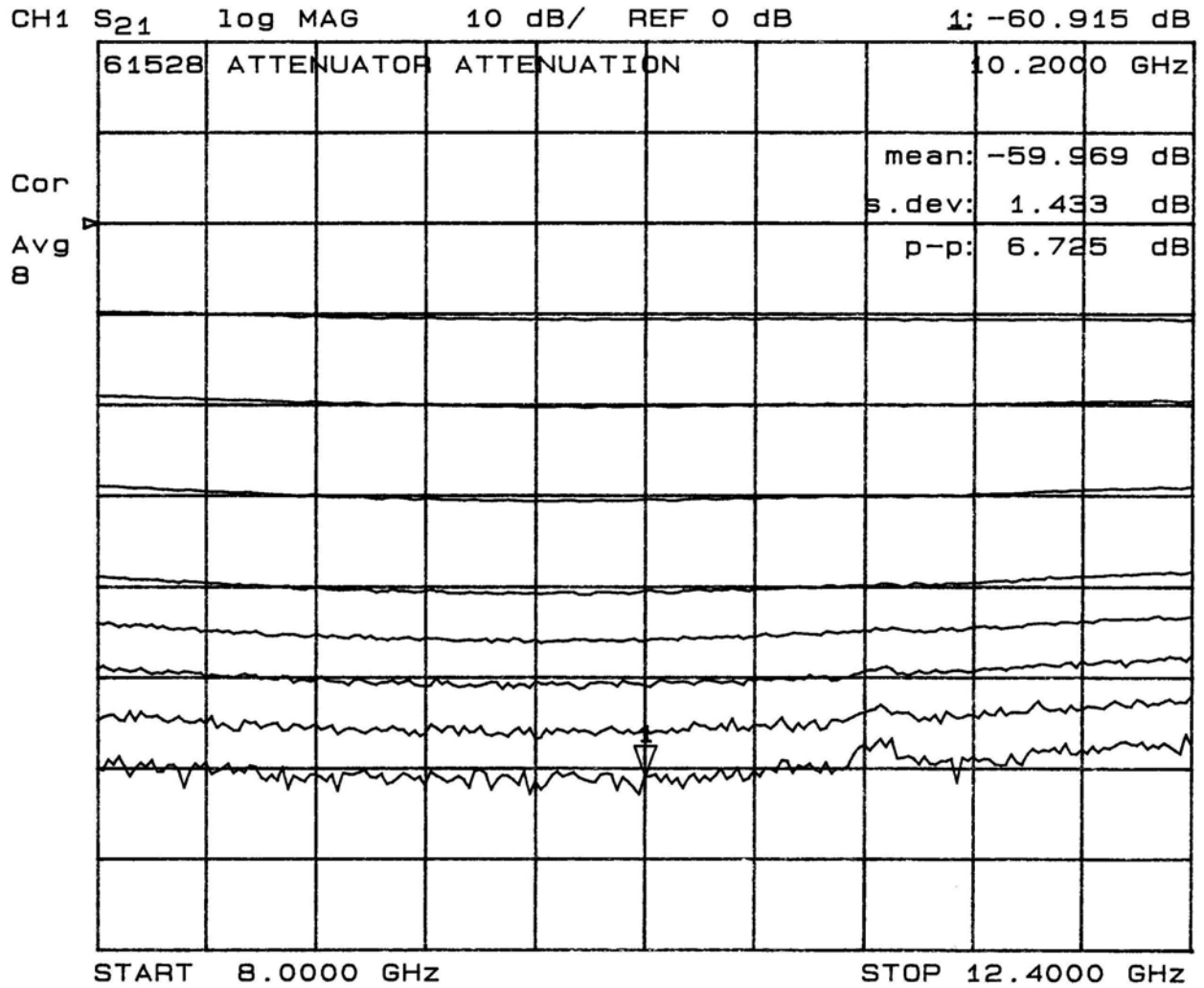


Typical Test Data Plots



USA/Canada: (315) 432-8909
 Toll Free: (800) 411-6596
 Europe: +44 2392-232392

Typical Test Data Plots



Attenuator Flatness

0dB to 45dB: +/- 2.5dB Max
45dB to 55dB: +/- 4.0dB Max

Typical Test Data Plots

