

Han E Quick-Lock module, female

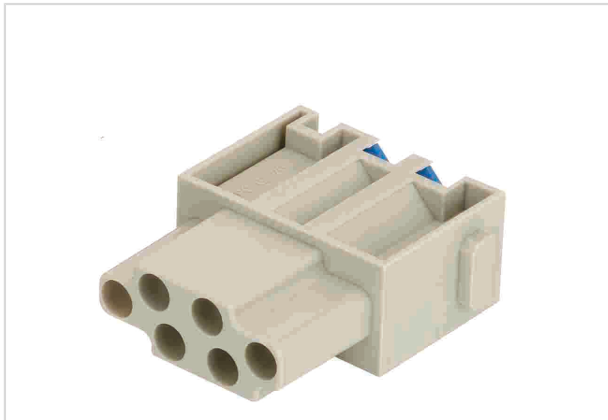


Image is for illustration purposes only. Please refer to product description.

Part number	09 14 006 2733
Specification	Han E Quick-Lock module, female
HARTING eCatalogue	https://b2b.harting.com/09140062733

Identification

Category	Modules
Series	Han-Modular®
Type of module	Han E® module

Version

Termination method	Han-Quick Lock® termination
Gender	Female
Number of contacts	6

Technical characteristics

Conductor cross-section	0.5 ... 2.5 mm ²
Rated current	16 A
Rated voltage	500 V
Rated impulse voltage	6 kV
Pollution degree	3
Rated voltage acc. to UL	600 V
Insulation resistance	>10 ¹⁰ Ω
Contact resistance	≤1 mΩ
Limiting temperature	-40 ... +125 °C
Mating cycles	≥500

Material properties

Material (insert)	Polycarbonate (PC)
-------------------	--------------------



Pushing Performance

Material properties

Colour (insert)	RAL 7032 (pebble grey)
Material (contacts)	Copper alloy
Surface (contacts)	Silver plated
Material flammability class acc. to UL 94	V-0
RoHS	compliant with exemption
RoHS exemptions	6(c): Copper alloy containing up to 4 % lead by weight
ELV status	compliant with exemption
China RoHS	50
REACH Annex XVII substances	No
REACH ANNEX XIV substances	No
REACH SVHC substances	Yes
REACH SVHC substances	Lead

Specifications and approvals

Specifications	EN 60664-1 IEC 61984
Approvals	DNV GL
UL / CSA	UL 1977 ECBT2.E235076 UL 2237 PVVA2.E318390 CSA-C22.2 No. 182.3 PVVA8.E318390

Commercial data

Packaging size	2
Net weight	15 g
Country of origin	Romania
European customs tariff number	85366990
eCl@ss	27440217 Module for industrial connectors (power/signals)