

01

0107

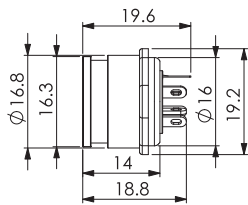
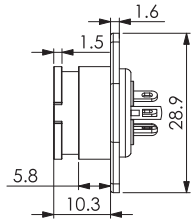
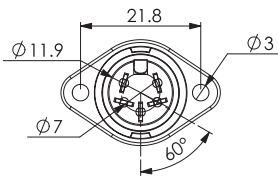
## DIN circular connectors



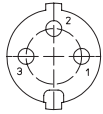
DIN chassis socket, shielded, with bayonet lock, metal housing, flange and solder terminals

01

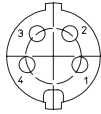
0107



DIN 41524

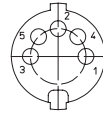


0107 03



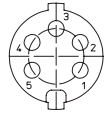
0107 04

DIN 41524



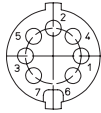
0107 05

DIN 45322



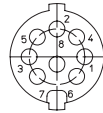
0107 05-1

DIN 45329



0107 07-1

DIN 45326



0107 08-1

**Environmental conditions**

Temperature range -20 °C/+85 °C

**Materials**

Insulating body ABS, V-0 according to UL94  
 Contact spring CuZn, silver-plated  
 Ground contact spring Cu, nickel-plated  
 Housing Zn alloy, nickel-plated

**Electrical data (at T<sub>amb</sub> 20 °C)**

Contact resistance ≤ 30 mΩ (contact spring)  
 ≤ 50 mΩ (housing)  
 Rated current ≤ 4 A  
 Rated voltage 60 V AC  
 Rated impulse voltage 250 V AC RMS/60 s  
 Insulation resistance ≥ 100 MΩ

**Associated products**

Counterparts  
 ☞ 0131 ☞ 0132 ☞ 0134

01

0107

Designation	Pole Number	PU (Pieces)	MDQ (Pieces)
0107 03	3	50	150
0107 04	4	50	150
0107 05	5	50	150
0107 05-1	5	50	150
0107 07-1	7	50	150
0107 08-1	8	50	150

**Packaging:**

in individual plastic bags, in a cardboard box