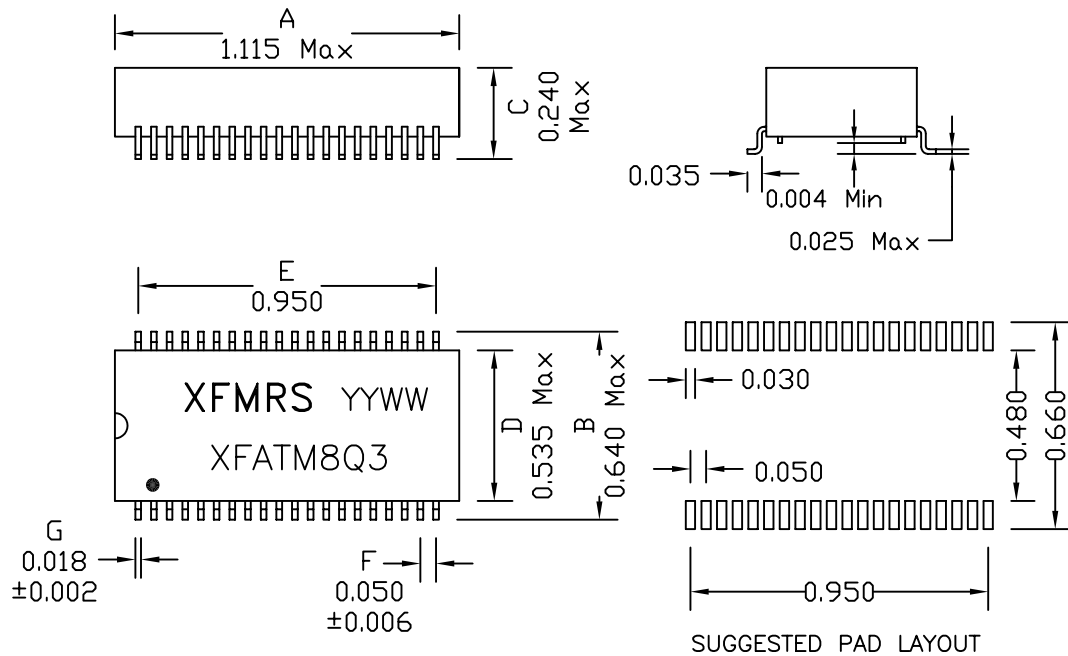


1. Mechanical Dimensions:



3. Electrical Specifications: @25°C

Isolation Voltage: 1500 Vrms (Input to Output)

OCL: 350uH Min. @100KHz, 100mV 8mAdc

Q: 5 Min. @100KHz, 100mV

Insertion Loss: -1.0dB Max @0.1-100MHz

Return Loss: -18dB Min. @2-30MHz

-14.4dB Min. @40MHz

-13.1dB Min. @50MHz

-12dB Typ. @60-80MHz

Crosstalk: -65dB Typ @1MHz

-55dB Typ @30MHz

-45dB Typ @60MHz

-35dB Typ @100MHz

Common to Common Mode Rej.:

Transmit: -30dB Typ @0.1-60MHz

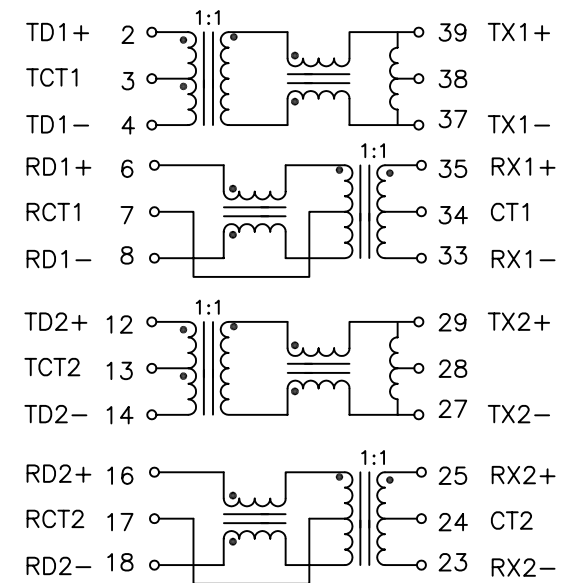
Receive: -30dB Typ @0.1-60MHz

Differential to Common Mode Rej.: -40dB Typ @1-60MHz

-30dB Typ @60-200MHz

DOC REV: A/4

2. Schematic:



Notes:

- Solderability: Leads shall meet MIL-STD-202G, Method 208H for solderability.
- Flammability: UL94V-0
- ASTM oxygen index: > 28%
- Insulation System: Class F 155°C. UL file E151556
- Operating Temperature Range: All listed parameters are to be within tolerance from 0°C to +70°C
- Storage Temperature Range: -55°C to +125°C
- Aqueous wash compatible
- SMD Lead Coplanarity: ±0.004" (0.102mm)
- Electrical and mechanical specifications 100% tested
- RoHS Compliant Component

XFMRS Inc www.XFMRS.com	Title: Dual Port 10/100BASE-TX Module		
	UNLESS OTHERWISE SPECIFIED	P/N: XFATM8Q3	REV. A
TOLERANCES:	DWN.	Feng	Nov-25-10
.xxx ±0.010	CHK.	YK Liao	Nov-25-10
Dimensions in INCH	APP.	BW	Nov-25-10
SCALE 2:1 SHT 1 OF 1			