

Customer Information Sheet

DRAWING No.: M20-107XX00

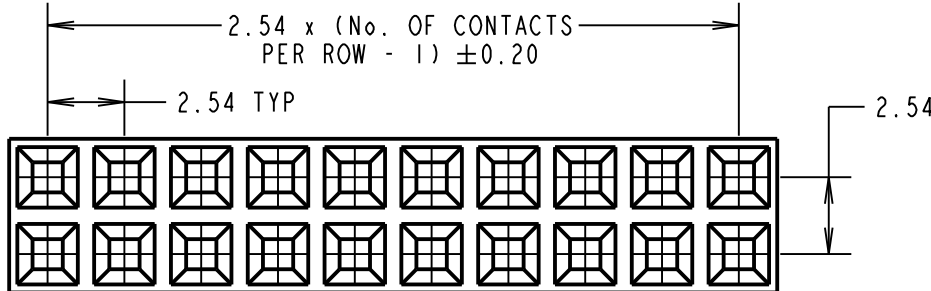
IF IN DOUBT - ASK

©

NOT TO SCALE

THIRD ANGLE PROJECTION

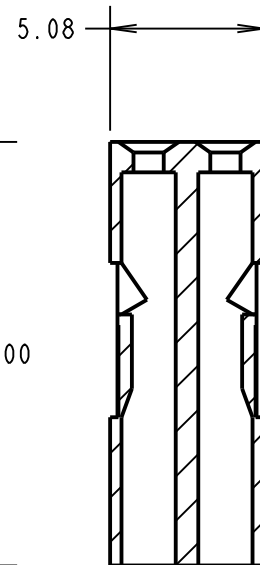
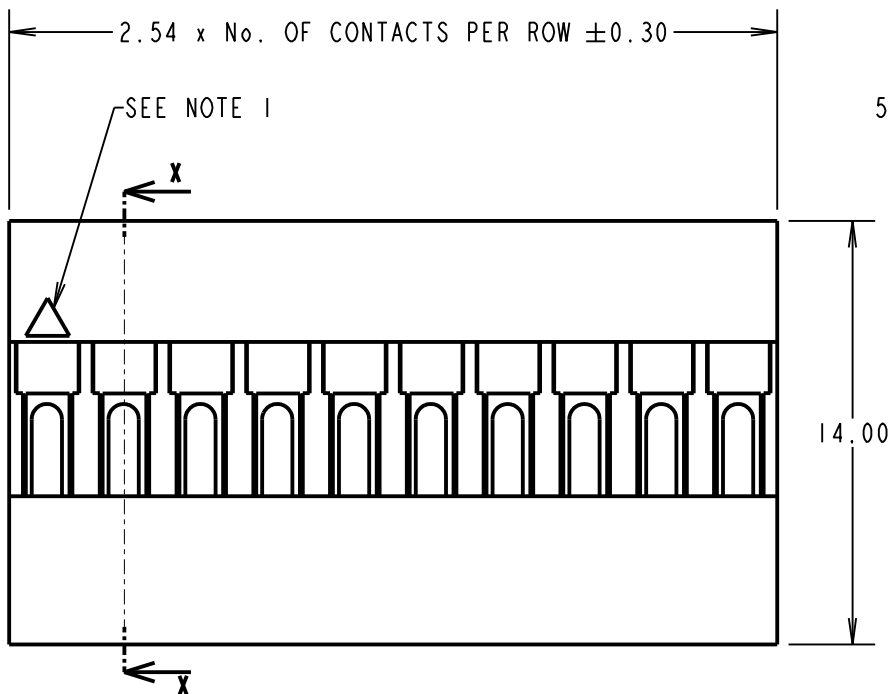
ALL DIMENSIONS IN mm



ORDER CODE: **M20-107XX00**

No. OF CONTACTS PER ROW:

02 TO 12



SECTION X-X

SPECIFICATIONS:

ELECTRICAL:

- CURRENT VOLTAGE RATING = 3A AC/DC
 - VOLTAGE RATING = 250V AC MAX
 - CONTACT RESISTANCE = 20mΩ MIN
 - INSULATION RESISTANCE = 1,500MΩ MIN
 - DIELECTRIC STRENGTH = 1,500 AC FOR 1 MINUTE
- ENVIRONMENTAL:**
- TEMPERATURE RANGE = -40°C TO +105°C

NOTES:

1. CONTACT No. 1 MARKER SYMBOL.
2. FOR USE WITH CRIMP CONTACTS:
M20-11600XX (REELED CONTACTS),
M20-11800XX (LOOSE CONTACTS).
3. THE ABOVE SPECIFICATIONS APPLY WHEN THIS MOULDING IS USED WITH THE SPECIFIC CONTACTS.
4. FOR COMPLETE ELECTRICAL AND MECHANICAL SPECIFICATIONS, SEE COMPONENT SPECIFICATION COO1XX (LATSEST ISSUE).
5. MATING LENGTH = 6.30mm MAX
5.50mm MIN

MSP	6	21.07.17	20286
NAME	ISS.	DATE	C/NOTE
APPROVED:		M.PERREN	
CHECKED:		M.PLESTED	
DRAWN:		S.BENNETT	
CUSTOMER REF.:			
ASSEMBLY DRG:			

HARWIN

www.harwin.com
technical@harwin.com

THIS DRAWING AND ANY INFORMATION OR DESCRIPTIVE MATTER SET OUT HEREON ARE CONFIDENTIAL AND COPYRIGHT PROPERTY OF THE HARWIN GROUP AND MUST NOT BE DISCLOSED, LOANED, COPIED OR USED FOR MANUFACTURING, TENDERING OR FOR ANY OTHER PURPOSE WITHOUT THEIR WRITTEN PERMISSION.

TOLERANCES

- X. = ±1mm
- X.X = ±0.50mm
- X.XX = ±0.10mm
- X.XXX = ±0.01mm

ANGLES = ±5°
UNLESS STATED

MATERIAL:

PPE+PS
UL94V-1 BLACK

FINISH: CLEAN, FLASH-FREE

S/AREA: mm²

TITLE:

2.54mm PITCH DIL
CRIMP MOULDING

DRAWING NUMBER:

M20-107XX00

SHT
2 OF 2