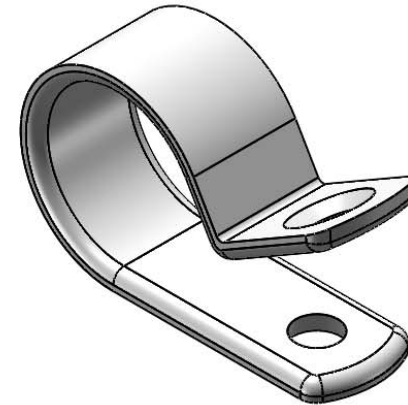


11/64 [4.4] DIA.
(1/8 [3.2] FOR N1 ONLY)
SOME PARTS MAY HAVE
SLIGHT CHAMFER ON HOLE



SHOWN AS MOLDED

NOTES:

- MATERIAL:
 NYLON 6/6 UL 94 V-2 (RMS-01).
 *NYLON 6/6 UL 94 V-0 (RMS-19) AVAILABLE BY SPECIAL ORDER ONLY.
 *NYLON 6/6 UL 94 V-2, UV STABILIZED (RMS-46), COLOR BLACK, AVAILABLE BY SPECIAL ORDER ONLY.
- RECOMMENDED SCREW SIZE IS #8 [M4], (#4 [M2.5] FOR N-1).
- ALTERNATE UNITS ARE FOR REFERENCE ONLY

PART NO.					"D" HOLDING DIAMETER	"E" REF.
NYLON 6/6 UL 94 V-2 NATURAL	NYLON 6/6 UL 94 V-2 BLACK	*NYLON 6/6 UL 94 V-0 BLACK	*NYLON 6/6 UL 94 V-0 NATURAL	*UV STABILIZED NYLON 6/6 UL 94 V-2 BLACK		
N-1	N-1-BK	N-1-19-BK	N-1-19	N-1-UVB	1/16 [1.6]	.27 [6.7]
N-2	N-2-BK	N-2-19-BK	N-2-19	N-2-UVB	1/8 [3.2]	21/64 [8.3]
N-3	N-3-BK	N-3-19-BK	N-3-19	N-3-UVB	3/16 [4.8]	25/64 [9.9]
N-4	N-4-BK	N-4-19-BK	N-4-19	N-4-UVB	1/4 [6.4]	27/64 [10.7]
N-5	N-5-BK	N-5-19-BK	N-5-19	N-5-UVB	5/16 [7.9]	29/64 [11.5]
N-6	N-6-BK	N-6-19-BK	N-6-19	N-6-UVB	3/8 [9.5]	31/64 [12.3]
N-7	N-7-BK	N-7-19-BK	N-7-19	N-7-UVB	7/16 [11.1]	17/32 [13.5]
N-8	N-8-BK	N-8-19-BK	N-8-19	N-8-UVB	1/2 [12.7]	9/16 [14.3]

I SEE CO 200516 FOR CHANGES SK 04/06/10			TITLE: CABLE CLAMP, N SERIES				DWG IN IN [MM] FINAL		PRINT TYPE CA	
H SEE CO 200485 FOR CHANGES DZ 01/12/2010			FILE #: N-SERIES		DWN: S.K.		APP: R.G.		PART #	
G SEE CO 200152 FOR CHANGES SK 04/03/2008			SHEET: 1 OF 1 SHEET SIZE: A		DT: 04/01/2008		CHKD: S.J.		SEE TABLE	
- SEE ENGINEERING FOR REV A-F - - - - -			RE: RICHCO, INC.		RICHCO, INC. ENG@RICHCO-INC.COM (773) 539-4060					
REV. DESCRIPTION ENGR. DATE			TOLERANCES UNLESS NOTED .XX=±.010 .XXX=±.005 FRAC.=±1/64 ANG.=±1°							