

# MIL-C-83723 SERIES I CRIMP REAR RELEASE ORDERING INFORMATION

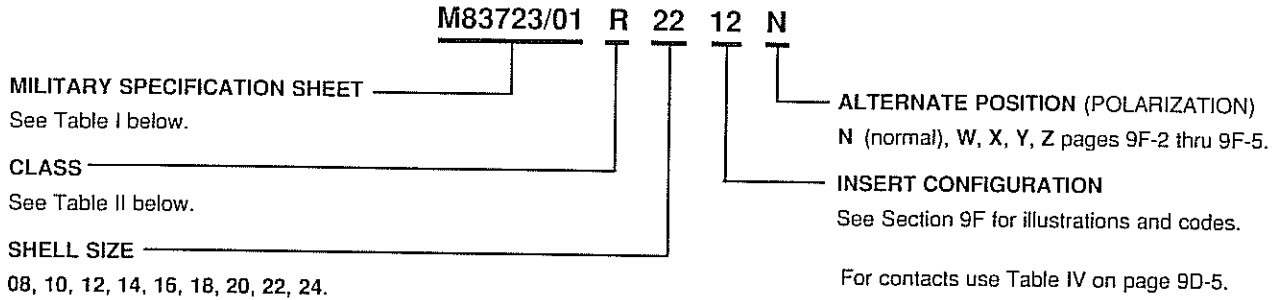


TABLE I. MILITARY SPECIFICATION SHEET

CONTACT STYLE*		CLASS	SHELL STYLE	SUPERSESSION DATA	SEE PAGE
PIN	SOCKET				
M83723/02	M83723/01	A, G, R	Narrow flange wall mount receptacle	Superseded by MS3470	9D-12
M83723/04	M83723/03	A, G, R	Wide flange wall mount receptacle	Superseded by MS3472	9D-14
M83723/06	M83723/05	A, G, R	Jam nut receptacle	Superseded by MS3474	9D-16
M83723/08	M83723/07	A, G, R	In-line receptacle	Superseded by MS3471	9D-13
M83723/09	-	H, Y	Hermetic narrow flange box mount receptacle	Superseded by MS3440	9D-8
M83723/10	-	H, Y	Hermetic wide flange box mount receptacle	Superseded by MS3442	9D-9
M83723/11	-	H, Y	Hermetic solder mount receptacle	Superseded by MS3443	9D-10
M83723/12	-	H, Y	Hermetic jam nut receptacle	Superseded by MS3449	9D-11
M83723/14	M83723/13	A, G, R	Straight plug	Superseded by MS3476	9D-18
M83723/36	M83723/37	A, G, R	Prewired size 8 straight plug	No superseding document	9E-4
M83723/38	M83723/39	A, G, R	Prewired size 8 narrow flange wall mount receptacle	No superseding document	9E-4
M83723/40	M83723/41	A, G, R	Prewired size 8 wide flange wall mount receptacle	No superseding document	9E-5
M83723/42	M83723/43	G, R	Straight plug, RFI grounding	Superseded by MS3475	9D-17
M83723/48	M83723/49	G, R	Prewired Size 8 straight plug, RFI grounding	No superseding document	9E-5

\* Contacts for Class G and R connectors are crimp, rear release; contacts for Class H connectors are non-removable, solder pot terminations.

1062

TABLE II. CLASS

CLASS	DESCRIPTION	MATERIAL	FINISH	TEMP.
A	Environmental	Aluminum	Non-conductive	200°C
G	Environmental, fluid resistant	Stainless steel	Passivated	200°C
H	Hermetic	Steel	Fused tin	150°C
R	Environmental, fluid resistant	Aluminum	Electroless nickel	200°C
Y	Environmental	Stainless steel	Passivated	150°C

1063

TABLE III. HERMETIC SEAL CONNECTORS AVAILABLE SOURCES

Data shown below is for reference only. MIL-C-83723 Series I is inactive for new design. Consult manufacturers for availability. See supersession data in Table I above.

MILITARY	CONNECTOR INDUSTRIES	HERMETIC SEAL
M83723/09H*N	K30-*-20	S9A-7102-*
M83723/09Y*N	K31-*-20	SS9A-7102-*
M83723/10H*N	K30A-*-20	S10A-7102-*
M83723/10Y*N	K31A-*-20	SS10A-7102-*
M83723/11H*N	K20-*-20	S11A-7002-*
M83723/11Y*N	K21-*-20	SS11A-7002-*
M83723/12H*N	K50-*-20	S12A-7202-*
M83723/12Y*N	K51-*-20	SS12A-7202-*

1064

\* Indicates additional information required in connector number.