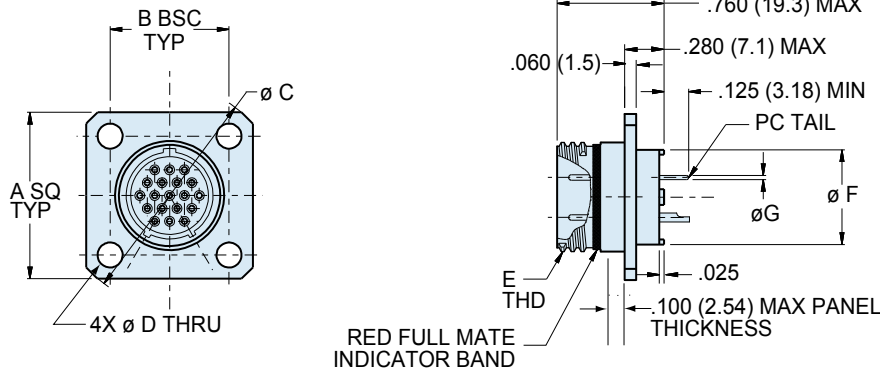




# Series 801 Mighty Mouse Double-Start ACME Thread Hermetic Receptacle

## 801-012-02 Dimensions

### Square Flange Mount - shell style 02

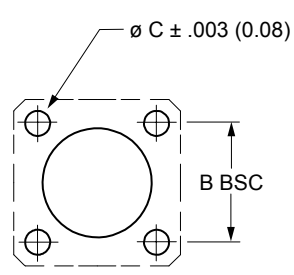


### Square Flange Mount Hermetic

#### 801-012-03

| Dimensions |       |       |       |       |       |       |           |           |                   |       |       |                 |
|------------|-------|-------|-------|-------|-------|-------|-----------|-----------|-------------------|-------|-------|-----------------|
| Shell Size | A Sq  |       | B BSC |       | Ø C   |       | Ø D       |           | E<br>Thread       | Ø F   |       | Ø G<br>Tail Dia |
|            | In.   | mm.   | In.   | mm.   | In.   | mm.   | In.       | mm.       |                   | In.   | mm.   |                 |
| 5          | .530  | 13.46 | .363  | 9.22  | .680  | 17.27 | .096/.091 | 2.44/2.31 | .3125-.05P-.1L-2A | .244  | 6.20  | #23             |
| 6          | .590  | 14.99 | .423  | 10.74 | .750  | 19.05 |           |           | .3750-.05P-.1L-2A | .330  | 8.38  | .018/.022       |
| 7          | .650  | 16.51 | .483  | 12.27 | .850  | 21.59 |           |           | .4375-.05P-.1L-2A | .432  | 10.97 | (0.46/0.56)     |
| 8          | .712  | 18.08 | .545  | 13.84 | .938  | 23.83 |           |           | .5000-.05P-.1L-2A | .493  | 12.52 | #20             |
| 9          | .850  | 21.59 | .607  | 15.42 | 1.125 | 28.58 | .130/.126 | 3.30/3.20 | .5625-.05P-.1L-2A | .551  | 14.00 | .024/.028       |
| 10         | .890  | 22.61 | .670  | 17.02 | 1.188 | 30.18 |           |           | .6250-.05P-.1L-2A | .620  | 15.75 | (0.61/0.71)     |
| 11         | .935  | 23.75 | .715  | 18.16 | 1.250 | 31.75 |           |           | .6875-.05P-.1L-2A | .662  | 16.81 | #16             |
| 13         | 1.030 | 26.16 | .812  | 20.62 | 1.375 | 34.93 |           |           | .8125-.1P-.2L-2A  | .703  | 17.86 | .060/.064       |
| 16         | 1.219 | 31.96 | .981  | 24.92 | 1.625 | 41.28 |           |           | 1.0000-.1P-.2L-2A | .863  | 21.92 | (1.52/1.63)     |
| 17         | 1.280 | 32.51 | 1.060 | 26.92 | 1.700 | 43.18 |           |           | 1.0625-.1P-.2L-2A | .912  | 23.16 | #12             |
| 19         | 1.432 | 36.37 | 1.191 | 30.25 | 1.900 | 48.26 |           |           | 1.1875-.1P-.2L-2A | 1.018 | 25.86 | .092/.096       |
| 21         | 1.565 | 39.75 | 1.322 | 33.58 | 2.100 | 53.34 |           |           | 1.3125-.1p-.2l-2a | 1.170 | 29.72 | (2.34/2.44)     |

| Series 801 Panel Cutout |       |       |           |           |
|-------------------------|-------|-------|-----------|-----------|
| Shell Size              | B BSC |       | Ø C       |           |
|                         | In.   | mm.   | In.       | mm.       |
| 5                       | .363  | 9.22  | .096/.091 | 2.44/2.31 |
| 6                       | .423  | 10.74 |           |           |
| 7                       | .483  | 12.27 |           |           |
| 8                       | .545  | 13.84 |           |           |
| 9                       | .607  | 15.42 | .130/.126 | 3.30/3.20 |
| 10                      | .670  | 17.02 |           |           |
| 11                      | .715  | 18.16 |           |           |
| 13                      | .812  | 20.62 |           |           |
| 16                      | .981  | 24.92 |           |           |
| 17                      | 1.060 | 26.92 |           |           |
| 19                      | 1.171 | 29.74 |           |           |
| 21                      | 1.322 | 33.58 |           |           |



Dimensions in Inches (millimeters) are subject to change without notice.