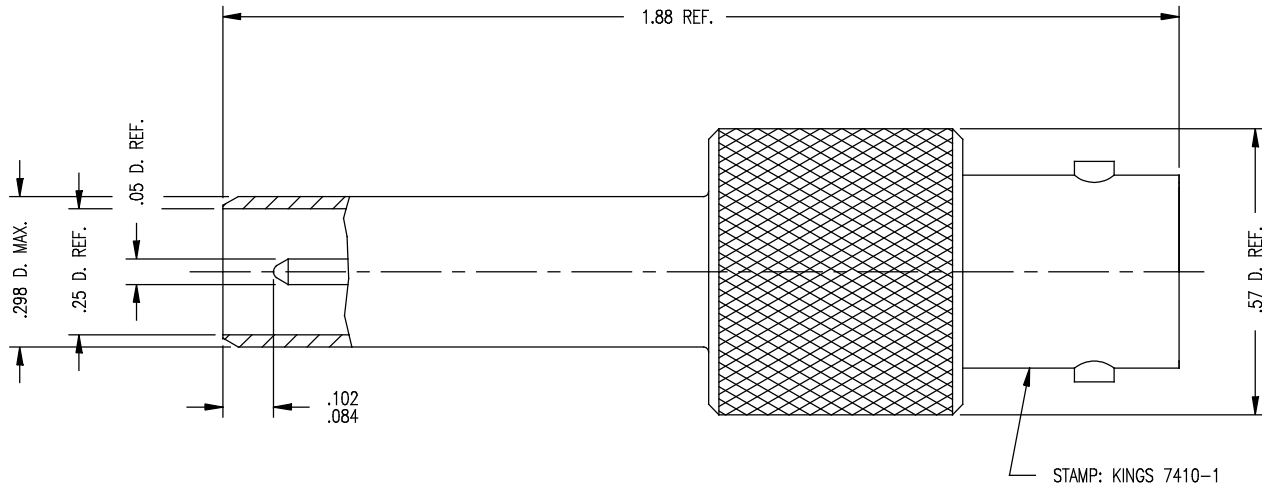


DASH NO.	M CODE	MADE FROM
----------	--------	-----------

GSD

7410-1

REVISIONS	
ISSUE	CHANGES
0	ER 33428 JCA 10/11/91



NOTES:

1. BNC INTERFACE PER ES-17, FIG. 5.
2. MATERIALS:  
INSULATOR-TEFLON, ASTM-D-1457  
CENTER CONTACT- BER. COP., ASTM-B-196  
ALL OTHER METAL PARTS-BRASS, ASTM-B16
3. FINISHES:  
CENTER CONTACTS-GOLD PLATE PER MIL-G-45204  
ALL OTHER METAL PARTS-KINGS TARNISH RESISTANT FINISH (TR-5)
4. ELECTRICAL CHARACTERISTICS:  
NOMINAL IMPEDANCE-75 OHMS  
WORKING VOLTAGE-500 VRMS  
FREQUENCY RANGE-DC TO 500 MHz

JCA2124

SCALE 4:1	
APPROX SURFACE AREA	
WAS: E-17127	
USED ON	
REF:	
ADAPTER, M-F, PATCH-BNC	
DRAWN JCA	DATE 10/10/91
DESIGN DW	DATE 10/11/91
APPR.	DATE

GSD

**KINGS**  
ELECTRONICS CO., INC.  
TUCKAHOE, NEW YORK 10707

7410-1