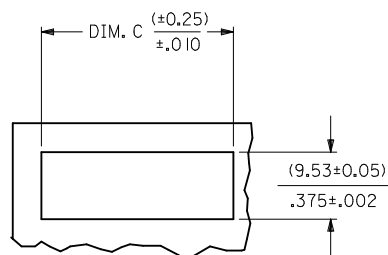
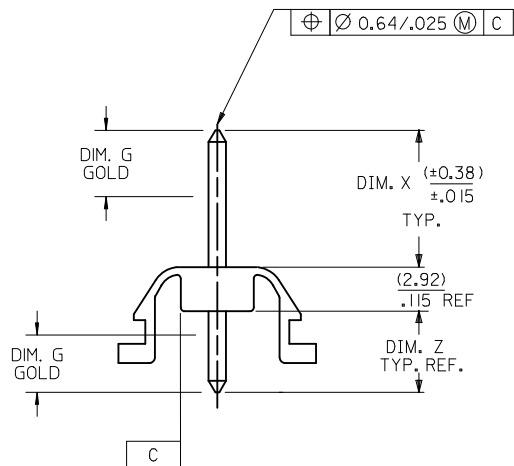
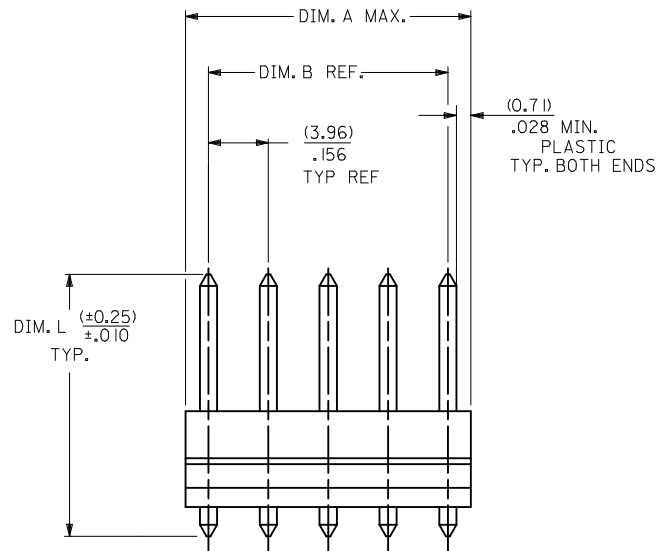


NO. OF CKTS.	DIM. A MAX.	DIM. B REF.	DIM. C
2	(7.37) .290	(3.96) .156	(7.67) .302
3	(11.33) .446	(7.92) .312	(11.63) .458
4	(15.29) .602	(11.89) .468	(15.60) .614
5	(19.25) .758	(15.85) .624	(19.56) .770
6	(23.22) .914	(19.81) .780	(23.52) .926
7	(27.18) 1.070	(23.77) .936	(27.48) 1.080
8	(31.14) 1.226	(27.74) 1.092	(31.45) 1.238
9	(35.10) 1.382	(31.70) 1.248	(35.41) 1.394
10	(39.07) 1.538	(35.66) 1.404	(39.37) 1.550
11	(43.03) 1.694	(39.62) 1.560	(43.33) 1.706
12	(46.99) 1.850	(43.59) 1.716	(47.29) 1.862
13	(50.95) 2.006	(47.55) 1.872	(51.26) 2.018
14	(54.91) 2.162	(51.51) 2.028	(55.22) 2.174
15	(58.88) 2.318	(55.47) 2.184	(59.18) 2.330
16	(62.84) 2.474	(59.44) 2.340	(63.14) 2.486
17	(66.80) 2.630	(63.40) 2.496	(67.11) 2.642
18	(70.76) 2.786	(67.36) 2.652	(71.07) 2.798
19	(74.65) 2.939	(71.32) 2.808	(74.96) 2.951
20	(78.61) 3.095	(75.29) 2.964	(78.92) 3.107



PANEL OPENNING
(1.57±.03) / .062±.001 THK.

⚠ PARTS MUST SNAP INTO ABOVE PCB



A-2220-N * * *
 NO. OF CKTS. ↑ ↑ ↑
 PACKAGING
 BLANK = PER PK-2220-002
 A = PER PK-44646-005

VERSION ———
 LETTER CHANGES WHEN
 PIN NO. OR PRESS
 DIM. CHANGES
 PLATING CODE
 SEE NOTE 2

- NOTES:
- MATERIAL: UNFILLED NYLON 6/6, UL94V-2, MOLDED NATURAL.
 - FINISH: SEE LEGEND
 (197) - OVERALL REFLOWED MATTE TIN: 0.00152/.000060 MIN.
 OVER 0.00127/.000050 MIN. NICKEL
 (502) - SELECT GOLD: 0.00051/.000020 MIN.
 OVERALL NICKEL UNDERPLATE: 0.00127/.000050 MIN.
 - PARTS CONFORM TO PRODUCT SPECIFICATION PS-08-50.
 - PACKAGING INFORMATION: SEE LEGEND.
 - PIN PUSHOUT FORCE: PRIOR TO SOLDERING, A 3 POUND MINIMUM FORCE (IN EITHER DIRECTION) SHALL BE REQUIRED TO PUSH THE PIN OUT OF THE HEADER.

CHANGE PLATING EC NO: UCP2012-1821 DRWINMSTROH 2012/01/18 CHKD:HKIPPER 2012/01/18 APPR:FSMITH 2012/02/02	DESCRIPTION REV	QUALITY SYMBOLS ▽=0 ▽=0 ▽=1	GENERAL TOLERANCES (UNLESS SPECIFIED)		DIMENSION STYLE MM/IN	SCALE ---	DESIGN UNITS INCH	THIRD ANGLE PROJECTION
			mm	INCH	DRAWN BY KSS	DATE 1984/10/30	TITLE WAFER ASSEMBLY CHASSIS MOUNT, KK 2220 SERIES DWG.	
			4 PLACES ± --- ± ---	CHECKED BY DMS	DATE 1984/10/30	MOLEX INCORPORATED DOCUMENT NO. SDA-2220		
			3 PLACES ± --- ± ---	APPROVED BY FSMITH	DATE 2012/01/06			
			2 PLACES ± --- ± ---	MATERIAL NO. SEE CHART		THIS DRAWING CONTAINS INFORMATION THAT IS PROPRIETARY TO MOLEX INCORPORATED AND SHOULD NOT BE USED WITHOUT WRITTEN PERMISSION		
			1 PLACE ± --- ± ---	DRAFT WHERE APPLICABLE MUST REMAIN WITHIN DIMENSIONS				

13	12	11	10	9	8	7	6	5	4	3	2	1
ENG. NO.	PIN NO.	DIM. L	DIM. X	DIM. Z	DIM. G TYP BOTH ENDS							
A-2220-NA197	43294-0832	<u>(35.05)</u> 1.380	<u>(16.00)</u> .630	<u>(16.13)</u> .635	N/A							
A-2220-NA502	43294-0833	<u>(35.05)</u> 1.380	<u>(16.00)</u> .630	<u>(16.13)</u> .635	<u>(6.85)</u> .270							
A-2220-NAB502	43294-1100	<u>(42.42)</u> 1.670	<u>(16.89)</u> .665	<u>(22.61)</u> .890	<u>(7.62)</u> .300							
A-2220-NB197	43294-1147	<u>(44.45)</u> 1.750	<u>(18.24)</u> .718	<u>(23.29)</u> .917	N/A							

SEE SHEET 1 EC NO: UCP2012-1821 DRWN: MSTR0H 2012/01/18 CHKD: HKIPPER 2012/01/18 APPR: FSMITH 2012/02/02	QUALITY SYMBOLS	GENERAL TOLERANCES (UNLESS SPECIFIED)	DIMENSION STYLE	SCALE	DESIGN UNITS	THIRD ANGLE PROJECTION
	▽=0	mm INCH	MM/IN	---	INCH	
	▽=0	4 PLACES ± --- ± ---	DRAWN BY DATE	TITLE		
	▽=0	3 PLACES ± --- ± ---	CHECKED BY DATE	WAFER ASSEMBLY CHASSIS MOUNT, KK 2220 SERIES DWG.		
	2 PLACES ± --- ± ---	1 PLACE ± --- ± ---	DMS 1984/10/30	MATERIAL NO. DOCUMENT NO.		
	ANGULAR ±1/2°		APPROVED BY DATE	MATERIAL NO. DOCUMENT NO.		
	DRAFT WHERE APPLICABLE MUST REMAIN WITHIN DIMENSIONS		FSMITH 2012/01/06	MATERIAL NO. DOCUMENT NO.		
			SEE CHART	SDA-2220		
			THIS DRAWING CONTAINS INFORMATION THAT IS PROPRIETARY TO MOLEX INCORPORATED AND SHOULD NOT BE USED WITHOUT WRITTEN PERMISSION			SHEET NO. 2 OF 3

	13	12	11	10	9	8	7	6	5	4	3	2	1
	A-2220-NA197		A-2220-NA502		A-2220-NAB502		A-2220-NB197						
	PART NO.	ENG. NO.	PART NO.	ENG. NO.	PART NO.	ENG. NO.	PART NO.	ENG. NO.					
J	09-57-1025	A-2220-2A197	09-78-1021	A-2220-2A502		A-2220-2AB502	09-57-1026	A-2220-2B197					
	09-57-1035	A-2220-3A197	09-78-1031	A-2220-3A502		A-2220-3AB502	09-57-1036	A-2220-3B197					
	09-57-1045	A-2220-4A197	09-78-1041	A-2220-4A502		A-2220-4AB502	09-57-1046	A-2220-4B197					
	09-57-1055	A-2220-5A197	09-78-1051	A-2220-5A502		A-2220-5AB502	09-57-1056	A-2220-5B197					
	09-57-1065	A-2220-6A197	09-78-1061	A-2220-6A502	09-78-1067	A-2220-6AB502	09-57-1066	A-2220-6B197					
I	09-57-1075	A-2220-7A197	09-78-1071	A-2220-7A502		A-2220-7AB502	09-57-1076	A-2220-7B197					
	09-57-1085	A-2220-8A197	09-78-1081	A-2220-8A502	09-78-1087	A-2220-8AB502	09-57-1086	A-2220-8B197					
	09-57-1095	A-2220-9A197	09-78-1091	A-2220-9A502		A-2220-9AB502	09-57-1096	A-2220-9B197					
	09-57-1105	A-2220-10A197	09-78-1101	A-2220-10A502	09-78-1107	A-2220-10AB502	09-57-1106	A-2220-10B197					
	09-57-1115	A-2220-11A197	09-78-1111	A-2220-11A502		A-2220-11AB502	09-57-1116	A-2220-11B197					
	09-57-1125	A-2220-12A197	09-78-1121	A-2220-12A502	09-78-1127	A-2220-12AB502	09-57-1126	A-2220-12B197					
	09-57-1135	A-2220-13A197	09-78-1131	A-2220-13A502		A-2220-13AB502	09-57-1136	A-2220-13B197					
H	09-57-1145	A-2220-14A197	09-78-1141	A-2220-14A502		A-2220-14AB502	09-57-1146	A-2220-14B197					
	09-57-1155	A-2220-15A197	09-78-1151	A-2220-15A502	09-78-1157	A-2220-15AB502	09-57-1156	A-2220-15B197					
	09-57-1165	A-2220-16A197	09-78-1161	A-2220-16A502		A-2220-16AB502	09-57-1166	A-2220-16B197					
	09-57-1175	A-2220-17A197	09-78-1171	A-2220-17A502		A-2220-17AB502	09-57-1176	A-2220-17B197					
	09-57-1185	A-2220-18A197	09-78-1181	A-2220-18A502		A-2220-18AB502	09-57-1186	A-2220-18B197					

SEE SHEET 1 EC NO: UCP2012-1821 DRAWN: M. STROH 2012/01/18 CHKD: H. K. IPPER 2012/01/18 APPR: F. SMITH 2012/02/02	QUALITY SYMBOLS 	GENERAL TOLERANCES (UNLESS SPECIFIED)		DIMENSION STYLE MM/IN		SCALE ---	DESIGN UNITS INCH	THIRD ANGLE PROJECTION
			mm	INCH	DRAWN BY KSS	DATE 1984/10/30	WAFER ASSEMBLY CHASSIS MOUNT, KK 2220 SERIES DWG.	
		4 PLACES ± ---	± ---	± ---	CHECKED BY DMS	DATE 1984/10/30		
		3 PLACES ± ---	± ---	± ---	APPROVED BY FSMITH	DATE 2012/01/06		
2 PLACES ± ---	± ---	± ---	ANGULAR ±1/2°		MATERIAL NO.	MOLEX INCORPORATED		
1 PLACE ± ---	± ---	± ---	DRAFT WHERE APPLICABLE MUST REMAIN WITHIN DIMENSIONS		SEE CHART		DOCUMENT NO. SDA-2220	
					SIZE C	THIS DRAWING CONTAINS INFORMATION THAT IS PROPRIETARY TO MOLEX INCORPORATED AND SHOULD NOT BE USED WITHOUT WRITTEN PERMISSION		