

# POWER LINE CHOKES COMMON MODE CHOKES

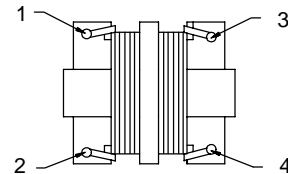
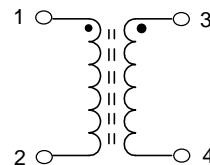
Power line chokes can be used to minimize EMI radiated noise in the common mode on all power applications. Bel offers a variety of inductances and rated currents, to provide full coverage of power requirements.

- \* 2000 Volts AC for 60 seconds Isolation Voltage.
- \* 250 Volts AC/DC rated voltage.
- \* Insulation Resistance is 100 Mohms minimum at 500 VDC.

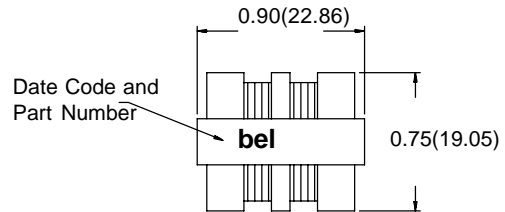
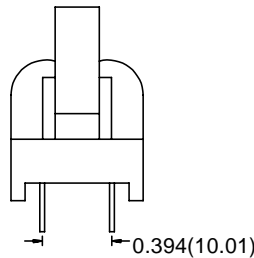
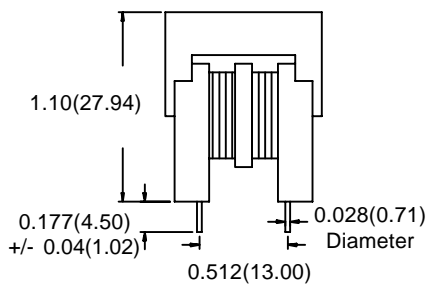
## ELECTRICALS @ 25° C

Part Number	Rated Current I/Line	Inductance OCL (mH) Min	DCR (ohm/line) Max
0571-0303-00	0.40	30.0	2.80
0571-0203-00	0.40	20.0	2.20
0571-0203-01	0.50	20.0	1.60
0571-0103-00	0.60	10.0	1.20
0571-0083-00	0.80	8.00	0.80
0571-0063-00	0.80	6.00	0.70
0571-0063-01	1.00	6.00	0.50
0571-0043-00	1.00	4.00	0.40
0571-0033-00	0.75	3.00	1.00
0571-0033-01	1.20	3.00	0.40
0571-0023-00	1.20	2.00	0.30
0571-0013-00	1.50	1.50	0.30

## SCHEMATIC



## MECHANICALS



Dimensions are in inches(mm)  
Dimension tolerance is equal to  
+/- 0.02(0.51) unless otherwise stated.

**Corporate Office**  
Bel Fuse Inc.  
198 Van Vorst Street, Jersey City, NJ 07302-4496  
Tel: 201-432-0463  
Fax: 201-432-9542  
E-Mail: BelFuse@belfuse.com  
Internet: <http://www.belfuse.com>

**Far East Office**  
Bel Fuse Ltd.  
8F/8 Luk Hop Street  
San Po Kong  
Kowloon, Hong Kong  
Tel: 852-2328-5515  
Fax: 852-2352-3706

**European Office**  
Bel Fuse Europe Ltd.  
Preston Technology Management Centre  
Marsh Lane, Preston PR1 8UD  
Lancashire, U.K.  
Tel: 44-1772-556601  
Fax: 44-1772-888366