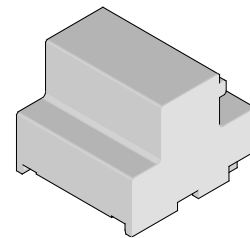


**CXP™ and zCXP™
Connector Assemblies
Installation
Press-In Tool**



**Application Tooling
Specification Sheet**



Order No. 62203-0031

FEATURES

- Lip provided for positive alignment to connector assembly
- Inserts connector to a PCB without damage to the board
- Use tool 62203-0040, 62203-0220, or 62203-0230 for removing connectors (depends on series)
- For connectors with top covers, use press-in tool 62203-0032

SCOPE

Products: CXP™ and zCXP™, 0.80mm (.031") Pitch, External Application, Integrated Cage and Connector Assembly, Right Angle, Press-Fit, 84 Circuit. See Product List below for specific part numbers.

Product List

The following is a partial list of the product order numbers and their specifications this tool is designed to run. Updates to this list are available on www.molex.com.

Connector Series No.	Assembly Order No.	
76105	76105-0184	76105-0185
170465	170465-0102	
170501	170501-0001	
170502	170502-0001	
173124	173124-0001	
173159	173159-0001	

Notes:

1. See the following pages for tooling operation instructions.
2. These tools require a "Keep Out Zone" around the connector free of components. The rear of the connector should be .197" (5.00mm). The right and left sides should be .059" (1.50mm). See Figure 1.

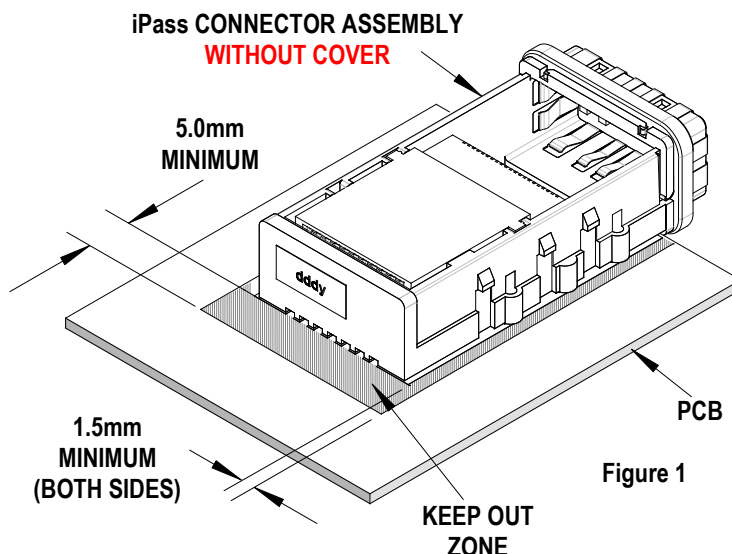


Figure 1

Tool Setup

Depending on the number of connectors to be installed and/or the press used, this tool can be used alone or with a group of press-in tools, mounted in a 62201-95XX rail (ordered separately). See Figure 2.

Tool Installation

The 62201-95XX rail is available in a variety of lengths to accommodate multiple press-in tools.

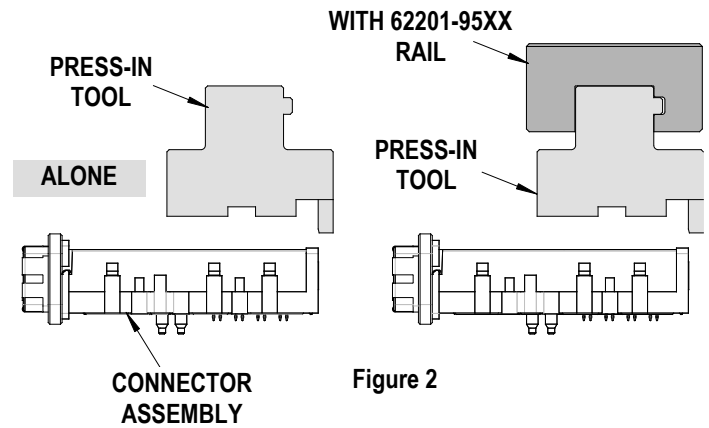


Figure 2

Rail Part Number	Rail Overall Length
62201-9501	24mm (0.94 in)
62201-9502	72mm (2.83 in)
62201-9503	156mm (6.14 in)
62201-9504	216mm (8.50 in)
62201-9509	254mm (10.0 in)
62201-9511	305mm (12.0 in)

Reference: This Press-In Tool is 27.5mm (1.08 in.) long.

Printed Circuit Board (PCB) Support

The iPass+™ connector assembly requires significant force to press into the PCB. To prevent excessive PCB flexure and/or damage to the PCB, a support plate is strongly recommended directly beneath the connector hole pattern.

Due to the custom nature of every application, Molex does not offer any PCB support plate. The customer must furnish their own support plate.

When creating the PCB support plate, remember to allow clearance for the connector pins if they pass through the PCB thickness.

Tool Operation

1. Carefully insert, by hand, the connector assembly (*without the cover*) using the alignment pegs (2) for location on the PCB.
2. Place the press-in-tool on top of the connector assembly with the back and side guide surfaces of the tool against the back and side(s) of the connector assembly. See Figure 3.
3. Place tool, connector, and PCB, in a press of suitable size and force, and seat the connector assembly as shown. The support plate (furnished by the customer) under the PCB must have clearance for the connector pins as they pass through the PCB.
4. Add the required number of M2 screws to secure the iPass+™ assembly to the PCB. See module product sales drawings SD-7610, 76827, 170465, and 170501 for correct mounting screw length.

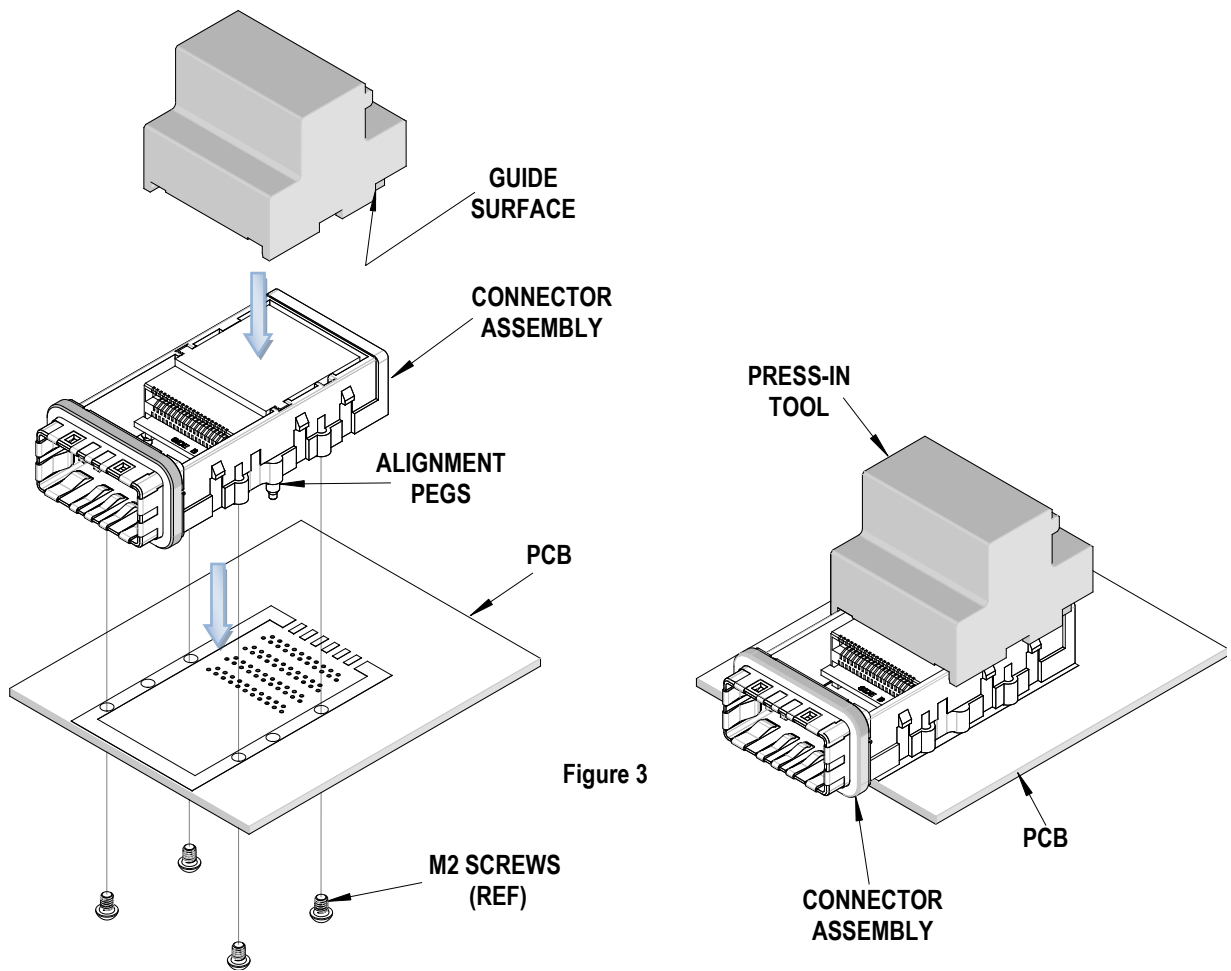


Figure 3

CAUTION: To prevent injury, never operate any press without the guards in place. Refer to the press manufacturer's instruction manual.

CAUTION: Molex application tooling specifications are valid only when used with Molex connectors and tooling.

Contact Information

For more information on Molex application tooling please contact Molex at 1-800-786-6539.

Visit our Web site at <http://www.molex.com>