

PLEASE CHECK WWW.MOLEX.COM FOR LATEST PART INFORMATION

Part Number: [0025022024](#)
Status: **Active**
Description: 2.54mm (.100") Pitch C-Grid® Header, Dual Row, Shrouded, with PC Slot and Guide Ear, 24 Circuits, Tn (Sn) Plating

Documents:

| | |
|---|--|
| 3D Model | Product Specification PS-70204 (PDF) |
| Packaging Specification (PDF) | RoHS Certificate of Compliance (PDF) |
| Drawing (PDF) | |

Agency Certification

| | |
|-----|---------|
| CSA | LR19980 |
| UL | E29179 |

General

| | |
|----------------|-----------------------|
| Product Family | PCB Headers |
| Series | 70204 |
| Application | Board-to-Board |
| Product Name | C-Grid® |

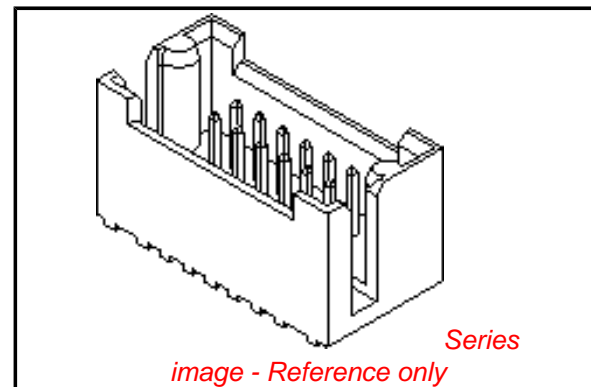
Physical

| | |
|--------------------------------|------------------------|
| Breakaway | No |
| Circuits (Loaded) | 24 |
| Circuits (maximum) | 24 |
| Durability (mating cycles max) | 25 |
| Flammability | 94V-0 |
| Glow-Wire Compliant | No |
| Guide to Mating Part | Yes |
| Lock to Mating Part | None |
| Material - Metal | Brass, Phosphor Bronze |
| Material - Plating Mating | Tin |
| Material - Plating Termination | Tin |
| Number of Rows | 2 |
| Orientation | Vertical |
| PC Tail Length (in) | 0.110 In |
| PC Tail Length (mm) | 2.79 mm |
| PCB Locator | No |
| PCB Retention | None |
| Packaging Type | Tray |
| Pitch - Mating Interface (in) | 0.100 In |
| Pitch - Mating Interface (mm) | 2.54 mm |
| Plating min: Mating (µin) | 150 |
| Plating min: Mating (µm) | 3.81 |
| Plating min: Termination (µin) | 150 |
| Plating min: Termination (µm) | 3.81 |
| Polarized to Mating Part | Yes |
| Polarized to PCB | No |
| Shrouded | Fully |
| Stackable | No |
| Temperature Range - Operating | -40°C to +105°C |
| Termination Interface: Style | Through Hole |

Electrical

| | |
|-------------------------------|------|
| Current - Maximum per Contact | 3A |
| Voltage - Maximum | 250V |

Solder Process Data



EU RoHS

ELV and RoHS Compliant
REACH SVHC Contains SVHC: No
Halogen-Free Status

Not Reviewed

Need more information on product environmental compliance?

Email productcompliance@molex.com
 For a multiple part number RoHS Certificate of Compliance, [click here](#)

Please visit the [Contact Us](#) section for any non-product compliance questions.

China RoHS



Search Parts in this Series

[70204Series](#)

Mates With

[71973](#)

| | |
|--|------------------------|
| Duration at Max. Process Temperature (seconds) | 5 |
| Lead-free Process Capability | Wave Capable (TH only) |
| Max. Cycles at Max. Process Temperature | 1 |
| Process Temperature max. C | 235 |

Material Info

| | |
|-----------------|------------|
| Old Part Number | 70204-0395 |
|-----------------|------------|

Reference - Drawing Numbers

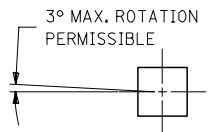
| | |
|-----------------------|---------------------|
| Product Specification | PS-70204 |
| Sales Drawing | SDA-70204-0385-0448 |

This document was generated on 03/31/2010

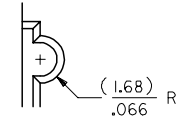
PLEASE CHECK WWW.MOLEX.COM FOR LATEST PART INFORMATION

| CKT. SIZE | PART NUMBER | ENG. NUMBER SDA-70204- | DIM. "A" | | DIM. "B" | | DIM. "C" | |
|-----------|-------------|------------------------|----------|------------|----------|-------|----------|-------|
| | | | MM | IN. | MM | IN. | MM | IN. |
| | | | 08 | 25-02-2008 | 0387 | 7,62 | .300 | 17,78 |
| 10 | 25-02-2010 | 0388 | 10,16 | .400 | 20,32 | .800 | 22,86 | .900 |
| 12 | 25-02-2012 | 0389 | 12,70 | .500 | 22,86 | .900 | 25,40 | 1.000 |
| 14 | 25-02-2014 | 0390 | 15,24 | .600 | 25,40 | 1.000 | 32,51 | 1.100 |
| 16 | 25-02-2016 | 0391 | 17,78 | .700 | 27,94 | 1.100 | 30,48 | 1.200 |
| 18 | 25-02-2018 | 0392 | 20,32 | .800 | 30,48 | 1.200 | 33,02 | 1.300 |
| 20 | 25-02-2020 | 0393 | 22,86 | .900 | 33,02 | 1.300 | 35,56 | 1.400 |
| 22 | 25-02-2022 | 0394 | 25,40 | 1.000 | 35,56 | 1.400 | 38,10 | 1.500 |
| 24 | 25-02-2024 | 0395 | 27,94 | 1.100 | 38,10 | 1.500 | 40,64 | 1.600 |
| 26 | 25-02-2026 | 0396 | 30,48 | 1.200 | 40,64 | 1.600 | 43,10 | 1.700 |
| 28 | 25-02-2028 | 0397 | 33,02 | 1.300 | 43,10 | 1.700 | 45,72 | 1.800 |
| 30 | 25-02-2030 | 0398 | 35,56 | 1.400 | 45,72 | 1.800 | 48,26 | 1.900 |
| 32 | 25-02-2032 | 0399 | 38,10 | 1.500 | 48,26 | 1.900 | 50,80 | 2.000 |
| 34 | 25-02-2034 | 0400 | 40,64 | 1.600 | 50,80 | 2.000 | 53,34 | 2.100 |
| 36 | 25-02-2036 | 0401 | 43,10 | 1.700 | 53,34 | 2.100 | 55,88 | 2.200 |
| 38 | 25-02-2038 | 0402 | 45,72 | 1.800 | 55,88 | 2.200 | 58,42 | 2.300 |
| 40 | 25-02-2040 | 0403 | 48,26 | 1.900 | 58,42 | 2.300 | 60,96 | 2.400 |

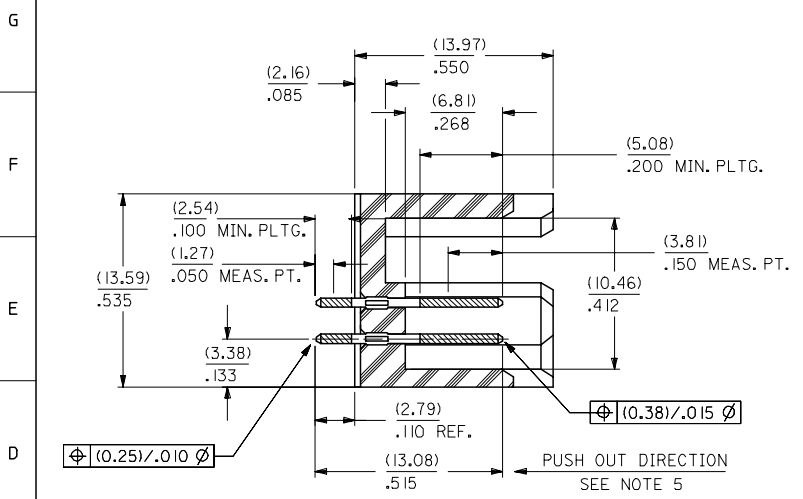
| CKT. SIZE | PART NUMBER | ENG. NUMBER SDA-70204- | DIM. "A" | | DIM. "B" | | DIM. "C" | |
|-----------|-------------|------------------------|----------|------------|----------|-------|----------|-------|
| | | | MM | IN. | MM | IN. | MM | IN. |
| | | | 42 | 25-02-2042 | 0404 | 50,80 | 2.000 | 60,96 |
| 44 | 25-02-2044 | 0405 | 53,34 | 2.100 | 63,50 | 2.500 | 66,04 | 2.600 |
| 46 | 25-02-2046 | 0406 | 55,88 | 2.200 | 66,04 | 2.600 | 68,58 | 2.700 |
| 48 | 25-02-2048 | 0407 | 58,42 | 2.300 | 68,58 | 2.700 | 71,12 | 2.800 |
| 50 | 25-02-2050 | 0408 | 60,96 | 2.400 | 71,12 | 2.800 | 73,66 | 2.900 |
| 52 | 25-02-2052 | 0409 | 63,50 | 2.500 | 73,66 | 2.900 | 76,20 | 3.000 |
| 54 | 25-02-2054 | 0410 | 66,04 | 2.600 | 76,20 | 3.000 | 78,74 | 3.100 |
| 56 | 25-02-2056 | 0411 | 68,58 | 2.700 | 78,74 | 3.100 | 81,28 | 3.200 |
| 58 | 25-02-2058 | 0412 | 71,12 | 2.800 | 81,28 | 3.200 | 83,82 | 3.300 |
| 60 | 25-02-2060 | 0413 | 73,66 | 2.900 | 83,82 | 3.300 | 86,36 | 3.400 |
| 62 | 25-02-2062 | 0414 | 76,20 | 3.000 | 86,36 | 3.400 | 88,90 | 3.500 |
| 64 | 25-02-2064 | 0415 | 78,74 | 3.100 | 88,90 | 3.500 | 91,44 | 3.600 |
| 66 | 25-02-2066 | 0416 | 81,28 | 3.200 | 91,44 | 3.600 | 93,98 | 3.700 |
| 68 | 25-02-2068 | 0417 | 83,82 | 3.300 | 93,98 | 3.700 | 96,52 | 3.800 |
| 70 | 25-02-2070 | 0418 | 86,36 | 3.400 | 96,52 | 3.800 | 99,06 | 3.900 |
| 72 | 25-02-2072 | 0419 | 88,90 | 3.500 | 99,06 | 3.900 | 101,60 | 4.000 |



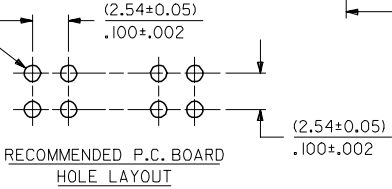
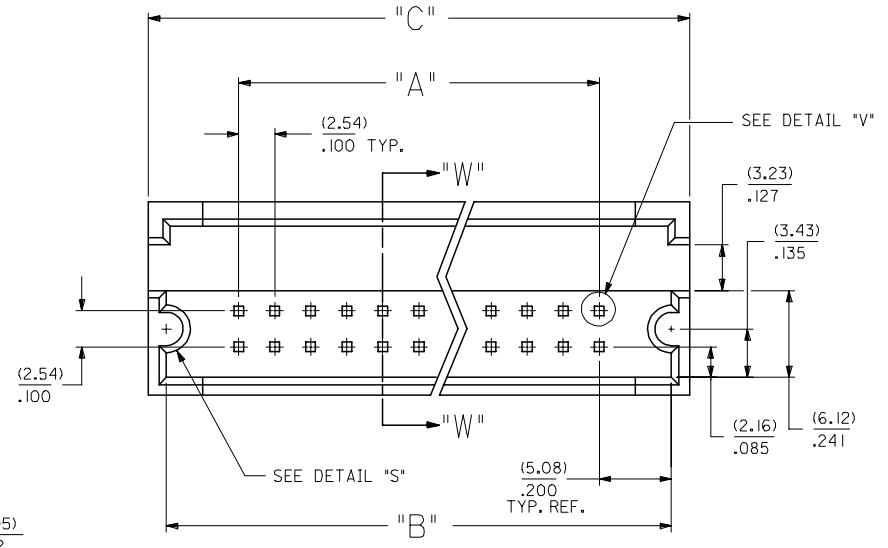
DETAIL "V"
SCALE = 20:1



DETAIL "S"



SECTION W-W



RECOMMENDED P.C. BOARD HOLE LAYOUT

NOTES:

- 1) WAFER MATERIAL: GLASS FILLED NYLON COLOR, BLACK.
- 2) PIN MATERIAL: PHOSPHOR BRONZE ALLOY
- 3) PIN PLATING: (OVERALL)
.000150 MINIMUM TIN PLATE
OVER .000050 MINIMUM NICKEL PLATE
- THE PRIMARY SHIPPING CARTON WILL BE LABELED "COMPLIANT TO RoHS DIRECTIVE 2002/95/EC AND ELV ANNEX II OF DIRECTIVE 2000/53/EC". CARTONS WITHOUT THIS LABEL MAY CONTAIN PRODUCT WITH LEAD.
- 4) PINS MUST MEET SOLDERABILITY SPEC. NO. 152.
- 5) PIN PUSH-OUT FORCE (1.81 KG.) / 4 LBS MIN.
- 6) REFER TO P.S. NO. 70204.
- 7) STANDARD PACKAGING PER: PK-70873-0070.

| | | | | | | | |
|---|-----------------------|--|-----------------|---|---------------------|--|-----------|
| REMOVE 0420-0448 EC NO: UCP2007-0113 DRW:ANDJORGAN 2006/08/07 CHK:CHSIBARRA 2006/08/16 APPR:SMILLER 2006/08/18 DESCRIPTION | QUALITY SYMBOLS | GENERAL TOLERANCES (UNLESS SPECIFIED) | DIMENSION STYLE | SCALE | DESIGN UNITS | THIRD ANGLE PROJECTION | |
| | ▽=0 ▽=0 | mm INCH | MM/IN | 4:1 | INCH | | |
| | | 4 PLACES ± --- ± --- | DRAWN BY DATE | JAS 1986/05/20 | TITLE | SHROUDED HEADER DUAL ROW W/PCB SLOTS & GUIDE EARS .100 GRID, .025 SQ PIN | |
| | | 3 PLACES ± --- ± .010 | CHECKED BY DATE | EIK 1986/05/20 | MATERIAL NO. | DOCUMENT NO. | SHEET NO. |
| | 2 PLACES ± 0.25 ± --- | APPROVED BY DATE | WAZ 1986/05/20 | SEE TABLE | SDA-70204-0385-0448 | 1 OF 1 | |
| | 1 PLACE ± --- ± --- | | | THIS DRAWING CONTAINS INFORMATION THAT IS PROPRIETARY TO MOLEX INCORPORATED AND SHOULD NOT BE USED WITHOUT WRITTEN PERMISSION | | | |
| | | ANGULAR ±1/2° | | | | | |
| | | DRAFT WHERE APPLICABLE MUST REMAIN WITHIN DIMENSIONS | | | | | |